

Native Human Serum Albumin protein ab205808

4 References 1 图像

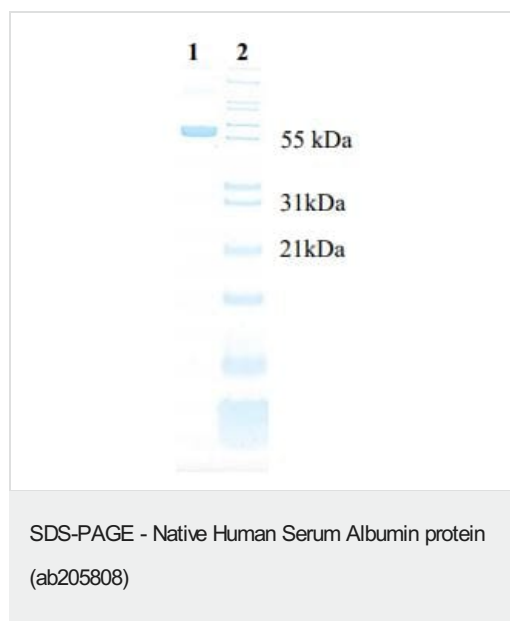
描述	
产品名称	Native 人Serum Albumin蛋白
纯度	> 95 % SDS-PAGE. Purified from normal Human Serum/Plasma obtained from healthy donors of US origin.
表达系统	Native
Accession	P02768
蛋白长度	Full length protein
无动物成分	No
性质	Native
种属	Human

技术指标	
Our Abpromise guarantee covers the use of ab205808 in the following tested applications.	
The application notes include recommended starting dilutions; optimal dilutions/concentrations should be determined by the end user.	
应用	SDS-PAGE
形式	Liquid
补充说明	Origin: Raw material has been tested for HIV-AG and found to be non-reactive. Donor serum has been tested and found to be negative for HIV 1/2, Hepatitis B Core Antigen, Hepatitis B Surface Antigen, and Hepatitis C Virus by currently approved FDA methods For <i>in vitro</i> Laboratory Use Only. Not for diagnostic or therapeutic use. Not for human or animal consumption. Suggested applications of our products are not recommendations to use our products in violation of any target restriction or as a license under any target restriction of Abcam.

制备和贮存	
稳定性和存储	Shipped at 4°C. Store at 4°C (stable for up to 12 months). Upon delivery aliquot. Store at +4°C. pH: 7.20 Preservative: 0.05% Sodium azide Constituents: 0.16% Sodium phosphate, 0.87% Sodium chloride

功能	Serum albumin, the main protein of plasma, has a good binding capacity for water, Ca(2+), Na(+), K(+), fatty acids, hormones, bilirubin and drugs. Its main function is the regulation of the colloidal osmotic pressure of blood. Major zinc transporter in plasma, typically binds about 80% of all plasma zinc.
组织特异性	Plasma.
疾病相关	Defects in ALB are a cause of familial dysalbuminemic hyperthyroxinemia (FDH) [MIM:103600]. FDH is a form of euthyroid hyperthyroxinemia that is due to increased affinity of ALB for T(4). It is the most common cause of inherited euthyroid hyperthyroxinemia in Caucasian population.
序列相似性	Belongs to the ALB/AFP/VDB family. Contains 3 albumin domains.
翻译后修饰	Kenitra variant is partially O-glycosylated at Thr-620. It has two new disulfide bonds Cys-600 to Cys-602 and Cys-601 to Cys-606. Glycated in diabetic patients. Phosphorylation sites are present in the extracellular medium. Acetylated on Lys-223 by acetylsalicylic acid.
细胞定位	Secreted.

图片



SDS-PAGE analysis of reduced and denatured ab205808.

Please note: All products are "FOR RESEARCH USE ONLY. NOT FOR USE IN DIAGNOSTIC PROCEDURES"

Our Abpromise to you: Quality guaranteed and expert technical support

- Replacement or refund for products not performing as stated on the datasheet
- Valid for 12 months from date of delivery
- Response to your inquiry within 24 hours
- We provide support in Chinese, English, French, German, Japanese and Spanish

- Extensive multi-media technical resources to help you
- We investigate all quality concerns to ensure our products perform to the highest standards

If the product does not perform as described on this datasheet, we will offer a refund or replacement. For full details of the Abpromise, please visit <https://www.abcam.cn/abpromise> or contact our technical team.

Terms and conditions

- Guarantee only valid for products bought direct from Abcam or one of our authorized distributors