

### Native Human IgE protein ab90392

**3 References**   [1 图像](#)

#### 描述

|       |                     |
|-------|---------------------|
| 产品名称  | Native人IgE蛋白        |
| 纯度    | > 95 % SDS-PAGE.    |
| 表达系统  | Native              |
| 蛋白长度  | Full length protein |
| 无动物成分 | No                  |
| 性质    | Native              |
| 种属    | Human               |
| 预测分子量 | 200 kDa             |

#### 技术指标

Our **Abpromise guarantee** covers the use of **ab90392** in the following tested applications.

The application notes include recommended starting dilutions; optimal dilutions/concentrations should be determined by the end user.

|      |   |
|------|---|
| 应用   | SDS-PAGE  |
| 形式   | Liquid  |
| 补充说明 | Prepared from plasma shown to be non reactive for HBsAg, anti-HCV, anti-HBc, and negative for anti-HIV 1 and 2 by FDA approved tests. |

#### 制备和贮存

|        |   |
|--------|---|
| 稳定性和存储 | Shipped on Dry Ice. Upon delivery aliquot. Store at -20°C or -80°C. Avoid freeze / thaw cycle.<br>pH: 7.50<br>Preservative: 0.05% Sodium azide<br>Constituents: 1.16% Sodium chloride, 1.21% Tris |
|--------|---|

#### 常规信息

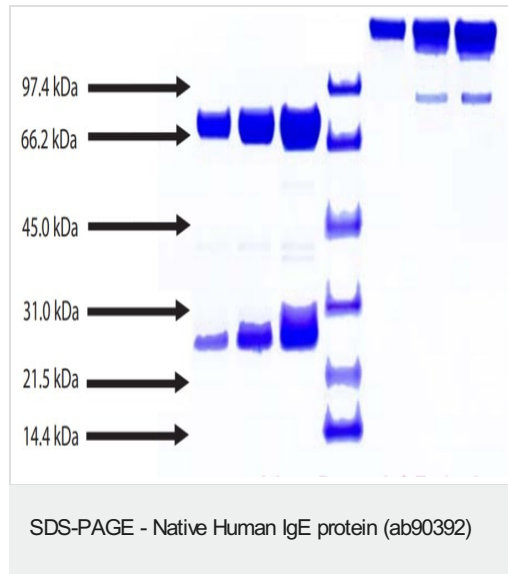
|     |  |
|-----|--|
| 相关性 | IgE is the class of antibodies produced in the lungs, skin, and mucous membranes. It may protect against parasite invasion, but it is a major factor in allergic reactions. The antigen-specific IgE |
|-----|--|

interacts with mast cells and eosinophils, triggers the release of histamine, leukotrienes and other substances that lead to the itching, sneezing and congestion of allergies - and the life threatening respiratory distress of asthma and anaphylactic shock.

## 细胞定位

Cell Membrane

## 图片



4 - 12% Bis-Tris NuPAGE gel

1. IgE - 5  $\mu$ g (reduced / heated)
2. IgE - 10  $\mu$ g (reduced / heated)
3. IgE - 20  $\mu$ g (reduced / heated)
4. LMW Standard (BIO-RAD Cat. No. 161-0304)
5. IgE - 5  $\mu$ g (non-reduced / no heat)
6. IgE - 10  $\mu$ g (non-reduced / no heat)
7. IgE - 20  $\mu$ g (non-reduced / no heat)

**Please note:** All products are "FOR RESEARCH USE ONLY. NOT FOR USE IN DIAGNOSTIC PROCEDURES"

## Our Abpromise to you: Quality guaranteed and expert technical support

- Replacement or refund for products not performing as stated on the datasheet
- Valid for 12 months from date of delivery
- Response to your inquiry within 24 hours
- We provide support in Chinese, English, French, German, Japanese and Spanish
- Extensive multi-media technical resources to help you
- We investigate all quality concerns to ensure our products perform to the highest standards

If the product does not perform as described on this datasheet, we will offer a refund or replacement. For full details of the Abpromise, please visit <https://www.abcam.cn/abpromise> or contact our technical team.

## Terms and conditions

- Guarantee only valid for products bought direct from Abcam or one of our authorized distributors