

Native human Cathepsin B protein ab90387

1 References [1 图像](#)

描述

产品名称	Native人Cathepsin B蛋白
生物活性	Activity: Greater than 200 units per mg protein. One unit is defined as the amount of enzyme that hydrolyzes one μ mole of Z-Arg-Arg-beta-naphthylamide per minute at 40°C, using 100 mM Na/K phosphate, pH 6.0, with 1.33 mM EDTA and 2 mM DTT as the activation buffer. Prepared from tissue shown to be non reactive for HBsAg, anti-HCV, anti-HBc, and negative for anti-HIV 1 & 2 by FDA approved tests.
纯度	> 95 % SDS-PAGE.
表达系统	Native
Accession	<u>P07858</u>
蛋白长度	Full length protein
无动物成分	No
性质	Native
种属	Human
预测分子量	28 kDa

技术指标

Our **Abpromise guarantee** covers the use of **ab90387** in the following tested applications.

The application notes include recommended starting dilutions; optimal dilutions/concentrations should be determined by the end user.

应用	Functional Studies
	SDS-PAGE
	Western blot

形式	Liquid
----	--------

制备和贮存

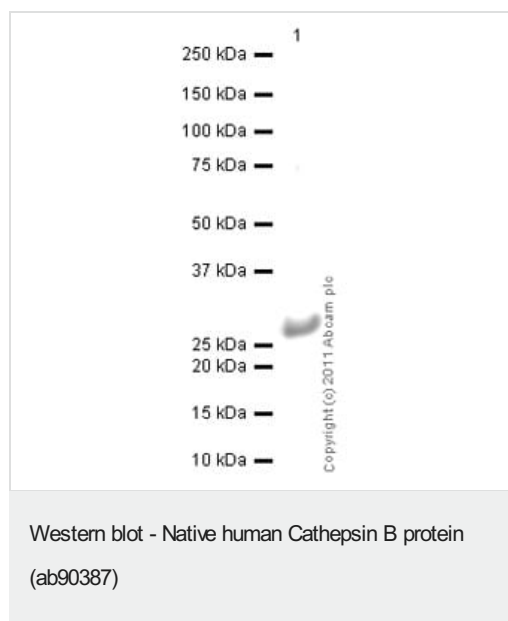
稳定性和存储	Shipped on dry ice. Upon delivery aliquot and store at -80°C. Avoid freeze / thaw cycles. pH: 5.00 Constituents: 0.41% Sodium acetate, 0.0292% EDTA
--------	---

This product is an active protein and may elicit a biological response in vivo, handle with caution.

常规信息

功能	Thiol protease which is believed to participate in intracellular degradation and turnover of proteins. Has also been implicated in tumor invasion and metastasis.
序列相似性	Belongs to the peptidase C1 family.
细胞定位	Lysosome. Melanosome. Identified by mass spectrometry in melanosome fractions from stage I to stage IV.

图片



Anti-Cathepsin B antibody [CA10] ([ab58802](#)) at 0.25 µg/ml +
Native human Cathepsin B protein (ab90387) at 0.01 µg

Secondary

Goat Anti-Mouse IgG H&L (HRP) preadsorbed ([ab97040](#)) at
1/5000 dilution

Developed using the ECL technique.

Performed under reducing conditions.

Exposure time: 10 seconds

Please note: All products are "FOR RESEARCH USE ONLY. NOT FOR USE IN DIAGNOSTIC PROCEDURES"

Our Abpromise to you: Quality guaranteed and expert technical support

- Replacement or refund for products not performing as stated on the datasheet
- Valid for 12 months from date of delivery
- Response to your inquiry within 24 hours
- We provide support in Chinese, English, French, German, Japanese and Spanish
- Extensive multi-media technical resources to help you
- We investigate all quality concerns to ensure our products perform to the highest standards

If the product does not perform as described on this datasheet, we will offer a refund or replacement. For full details of the Abpromise, please visit <https://www.abcam.cn/abpromise> or contact our technical team.

Terms and conditions

- Guarantee only valid for products bought direct from Abcam or one of our authorized distributors