

### Native human Calpain 1 protein (Active) ab91019

★★★★★ [1 Abreviews](#) [4 References](#) [2 图像](#)

#### 描述

产品名称	Native人Calpain 1蛋白(Active)
生物活性	<p><math>\geq 1,000</math> units per mg protein.</p> <p>One unit is defined as the amount of enzyme that hydrolyzes one picomole of Suc-LLVY-AMC per minute at 25degC.</p>
纯度	> 95 % SDS-PAGE.
表达系统	Native
Accession	<b><u>P07384</u></b>
蛋白长度	Full length protein
无动物成分	No
性质	Native
种属	Human
预测分子量	110 kDa

#### 技术指标

Our **Abpromise guarantee** covers the use of **ab91019** in the following tested applications.

The application notes include recommended starting dilutions; optimal dilutions/concentrations should be determined by the end user.

应用	<p>Western blot</p> <p>Functional Studies</p> <p>SDS-PAGE</p>
形式	Liquid
补充说明	<p>Prepared from whole blood shown to be non-reactive for HBsAg, anti-HCV, anti-HBc, and negative for anti-HIV 1 &amp; 2 by FDA approved tests.</p> <p>Protein determination: Bradford Assay.</p>

#### 制备和贮存

稳定性和存储	<p>Shipped on dry ice. Upon delivery aliquot and store at -80°C. Avoid freeze / thaw cycles.</p> <p>pH: 6.80</p>
--------	--

Preservative: 0.14% Imidazole

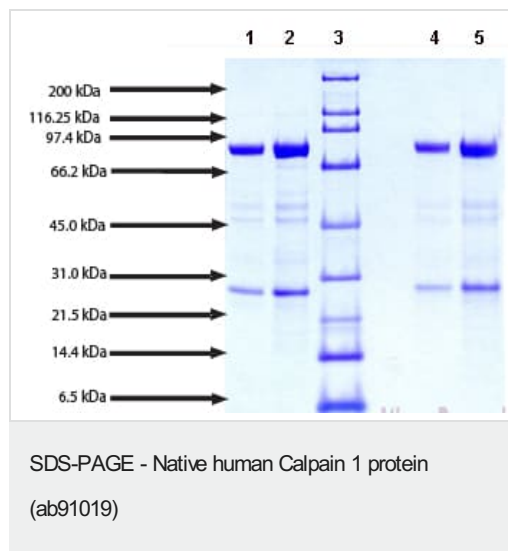
Constituents: 0.038% EGTA, 0.039% Beta mercaptoethanol, 0.0292% EDTA, 30% Glycerol

This product is an active protein and may elicit a biological response in vivo, handle with caution.

## 常规信息

功能	Calcium-regulated non-lysosomal thiol-protease which catalyze limited proteolysis of substrates involved in cytoskeletal remodeling and signal transduction.
组织特异性	Ubiquitous.
序列相似性	Belongs to the peptidase C2 family. Contains 1 calpain catalytic domain. Contains 4 EF-hand domains.
细胞定位	Cytoplasm. Cell membrane. Translocates to the plasma membrane upon Ca(2+) binding.

## 图片



SDS-PAGE: 4-12% Bis-Tris NuPAGE gel

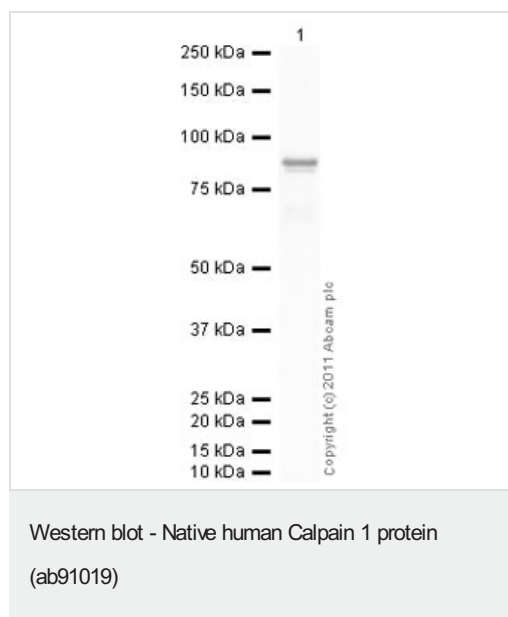
Lane 1: 5 µg ab91019 (reduced /heated).

Lane 2: 10 µg ab91019 (reduced/ heated).

Lane 3: Molecular weight markers.

Lane 4: 5 µg ab91019 (non-reduced/no heat).

Lane 5: 10 µg ab91019 (non-reduced/no heat).



Anti-Calpain 1 antibody ([ab2543](#)) at 1 µg/ml + Native human Calpain 1 protein (Active) (ab91019) at 0.01 µg

### Secondary

Goat Anti-Rabbit IgG H&L (HRP) preadsorbed ([ab97080](#)) at 1/5000 dilution

Developed using the ECL technique.

Performed under reducing conditions.

**Exposure time:** 10 seconds

**Please note:** All products are "FOR RESEARCH USE ONLY. NOT FOR USE IN DIAGNOSTIC PROCEDURES"

### **Our Abpromise to you: Quality guaranteed and expert technical support**

---

- Replacement or refund for products not performing as stated on the datasheet
- Valid for 12 months from date of delivery
- Response to your inquiry within 24 hours
- We provide support in Chinese, English, French, German, Japanese and Spanish
- Extensive multi-media technical resources to help you
- We investigate all quality concerns to ensure our products perform to the highest standards

If the product does not perform as described on this datasheet, we will offer a refund or replacement. For full details of the Abpromise, please visit <https://www.abcam.cn/abpromise> or contact our technical team.

### **Terms and conditions**

---

- Guarantee only valid for products bought direct from Abcam or one of our authorized distributors