

Anti-ZFP36L1 (phospho S92) antibody [EPR19926] ab204922

敲除验证
重组
RabMAb

[1 References](#)
[4 图像](#)

概述

产品名称	Anti-ZFP36L1 (phospho S92)抗体[EPR19926]
描述	兔单克隆抗体[EPR19926] to ZFP36L1 (phospho S92)
宿主	Rabbit
经测试应用	适用于: Dot blot, WB 不适用于: IHC-P or IP
种属反应性	与反应: Mouse, Human
免疫原	Synthetic peptide. This information is proprietary to Abcam and/or its suppliers.
阳性对照	WB: HEK-293T transfected with human ZFP36L1 expression vector containing a myc-His-tag®, whole cell lysate; Wild-type mouse CD4+ and CD8+ T cells treated with 10ng/ml Phorbol-12-myristate-13-acetate (PMA) and 1mM Ionomycin for 3 hours, whole cell lysate. Dot blot: ZFP36L1 (phospho S92) peptide (aa87-97).
常规说明	<p>This product is a recombinant monoclonal antibody, which offers several advantages including:</p> <ul style="list-style-type: none"> - High batch-to-batch consistency and reproducibility - Improved sensitivity and specificity - Long-term security of supply - Animal-free production <p>For more information see here.</p> <p>Our RabMAb® technology is a patented hybridoma-based technology for making rabbit monoclonal antibodies. For details on our patents, please refer to RabMAb® patents.</p>

性能

形式	Liquid
存放说明	Shipped at 4°C. Store at +4°C short term (1-2 weeks). Upon delivery aliquot. Store at -20°C long term. Avoid freeze / thaw cycle.
存储溶液	pH: 7.2 Preservative: 0.01% Sodium azide Constituents: PBS, 40% Glycerol (glycerin, glycerine), 0.05% BSA
纯度	Protein A purified
克隆	单克隆

克隆编号EPR19926

同种型IgG

应用

The Abpromise guarantee

Abpromise™承诺保证使用ab204922于以下的经测试应用

“应用说明”部分 下显示的仅为推荐的起始稀释度;实际最佳的稀释度/浓度应由使用者检定。

应用	Ab评论	说明
Dot blot		1/1000.
WB		1/5000. Detects a band of approximately 36-47 kDa (predicted molecular weight: 36 kDa).

应用说明

Is unsuitable for IHC-P or IP.

靶标

功能

Probable regulatory protein involved in regulating the response to growth factors.

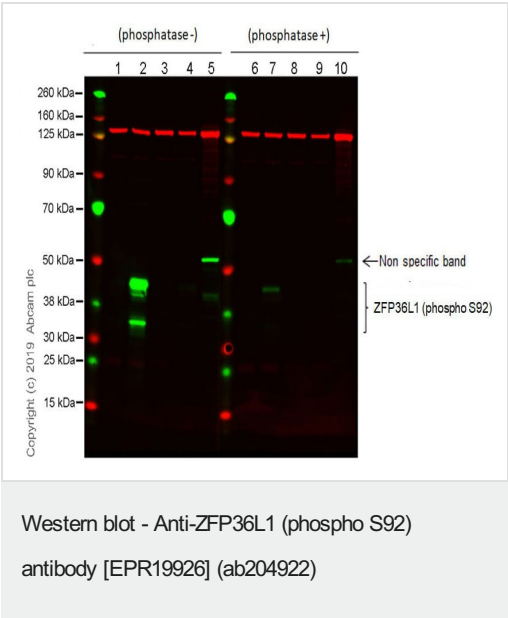
序列相似性

Contains 2 C3H1-type zinc fingers.

细胞定位

Cytoplasm. Nucleus. Shuttles between the nucleus and the cytoplasm.

图片



All lanes : Anti-ZFP36L1 (phospho S92) antibody [EPR19926] (ab204922) at 1/2500 dilution

- Lane 1 :** Unstimulated wild-type mouse CD4+ and CD8+ T cells, whole cell lysate (Untreated membrane)
- Lane 2 :** Wild-type mouse CD4+ and CD8+ T cells treated with 10ng/ml Phorbol-12-myristate-13-acetate (PMA) and 1mM Ionomycin for 3 hours, whole cell lysate (Untreated membrane)
- Lane 3 :** Unstimulated ZFP36L1 knockout mouse CD4+ and CD8+ T cells, whole cell lysate (Untreated membrane)
- Lane 4 :** ZFP36L1 knockout mouse CD4+ and CD8+ T cells treated with 10ng/ml Phorbol-12-myristate-13-acetate (PMA) and 1mM Ionomycin for 3 hours, whole cell lysate (Untreated membrane)
- Lane 5 :** HeLa (human cervix adenocarcinoma epithelial cell), whole cell lysate (Untreated membrane)
- Lane 6 :** Unstimulated wild-type mouse CD4+ and CD8+ T cells, whole cell lysate (Phosphatase treated membrane)
- Lane 7 :** Wild-type mouse CD4+ and CD8+ T cells treated with 10ng/ml Phorbol-12-myristate-13-acetate (PMA) and 1mM

ionomycin for 3 hours, whole cell lysate (Phosphatase treated membrane)

Lane 8 : Unstimulated ZFP36L1 knockout mouse CD4+ and CD8+ T cells, whole cell lysate (Phosphatase treated membrane)

Lane 9 : ZFP36L1 knockout mouse CD4+ and CD8+ T cells treated with 10ng/ml Phorbol-12-myristate-13-acetate (PMA) and 1mM Ionomycin for 3 hours, whole cell lysate (Phosphatase treated membrane)

Lane 10 : HeLa (human cervix adenocarcinoma epithelial cell), whole cell lysate, (Phosphatase treated membrane)

Lysates/proteins at 20 µg per lane.

Secondary

All lanes : Goat anti-Rabbit IgG H&L (IRDye® 800CW) preabsorbed ([ab216773](#)); and Goat anti-Mouse IgG H&L (IRDye® 680RD) preabsorbed ([ab216776](#)) at 1/15000 dilution

Predicted band size: 36 kDa

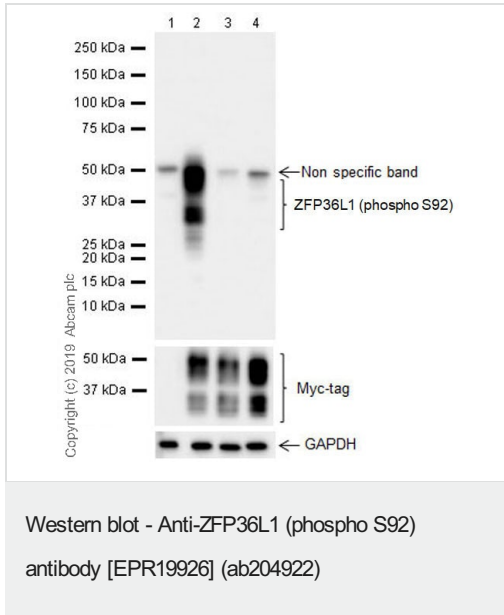
Observed band size: 36-47 kDa

Blocking and diluting buffer and concentration: 3% NFDM/TBST.

Lysates from the ZFP36L1^{fl/fl} CD4 cre KO mouse were kindly provided by Dr Fiamma Salerno, Turner Lab, Babraham Institute.

Lysates used for the WB were isolated by negative selection using biotinylated abs against Ter119, CD11b, CD11c, Gr1, CD19, B220, F4/80 and NK1.1 to leave a population of CD4 and CD8 positive T cells (the purity of the population was >95% as checked by flow).

Mouse anti-vinculin [ab130007](#), used as the loading control.



All lanes : Anti-ZFP36L1 (phospho S92) antibody [EPR19926] (ab204922) at 1/5000 dilution

Lane 1 : HEK-293T (human embryonic kidney epithelial cell) transfected with an empty vector (vector control) containing a myc-His-tag®, whole cell lysate

Lane 2 : HEK-293T transfected with human ZFP36L1 expression vector containing a myc-His-tag®, whole cell lysate

Lane 3 : HEK-293T transfected with human ZFP36L1 expression vector containing a myc-His-tag®, then treated with alkaline phosphatase for 1 hour on the membrane

Lane 4 : HEK-293T transfected with human ZFP36L1 S92A mutant expression vector containing a myc-His-tag®, whole cell lysate

Lysates/proteins at 10 µg per lane.

Secondary

All lanes : Goat Anti-Rabbit IgG H&L (HRP) ([ab97051](#)) at 1/100000 dilution

Predicted band size: 36 kDa

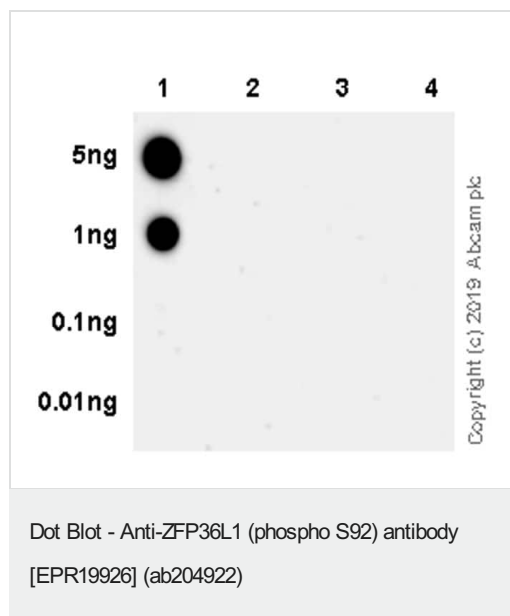
Observed band size: 36-47 kDa

Blocking and diluting buffer and concentration: 2% BSA/TBST.

All plasmids were kindly provided by Dr Fiamma Salerno, Turner Lab, Babraham Institute.

The expression profile observed is consistent with what has been described in the literature (PMID: [17030608](#)).

Exposure time: 8 seconds



Dot blot analysis of ZFP36L1 (phospho S92) labeled with ab204922 at 1/1000 dilution.

Lane 1: ZFP36L1 (phospho S92) peptide (aa87-97).

Lane 2: ZFP36L1 non-phospho peptide (aa87-97).

Lane 3: ZFP36L1 (phospho S125) peptide (aa120-130).

Lane 4: ZFP36L1 non-phospho peptide (aa120-130).

Blocking and dilution buffer: 5% NFDM/TBST. Goat Anti-Rabbit IgG H&L (HRP) (**ab97051**) at 1/100000 dilution was used as secondary antibody.

Exposure time: 3 minutes.

Why choose a recombinant antibody?

<p>Research with confidence Consistent and reproducible results</p>	<p>Long-term and scalable supply Recombinant technology</p>
<p>Success from the first experiment Confirmed specificity</p>	<p>Ethical standards compliant Animal-free production</p>

Anti-ZFP36L1 (phospho S92) antibody [EPR19926] (ab204922)

Please note: All products are "FOR RESEARCH USE ONLY. NOT FOR USE IN DIAGNOSTIC PROCEDURES"

Our Abpromise to you: Quality guaranteed and expert technical support

- Replacement or refund for products not performing as stated on the datasheet
- Valid for 12 months from date of delivery
- Response to your inquiry within 24 hours
- We provide support in Chinese, English, French, German, Japanese and Spanish
- Extensive multi-media technical resources to help you
- We investigate all quality concerns to ensure our products perform to the highest standards

If the product does not perform as described on this datasheet, we will offer a refund or replacement. For full details of the Abpromise, please visit <https://www.abcam.cn/abpromise> or contact our technical team.

Terms and conditions

- Guarantee only valid for products bought direct from Abcam or one of our authorized distributors