




# Anti-ZDHHC13 antibody ab28759

**2 References**   **1 图像**

### 概述

产品名称	Anti-ZDHHC13抗体
描述	山羊多克隆抗体to ZDHHC13
宿主	Goat
特异性	This antibody is expected to recognise both reported isoforms (as represented by NP_061901 and NP_001001483).
经测试应用	<b>适用于:</b> WB
种属反应性	<b>与反应:</b> Human <b>预测可用于:</b> Mouse, Rat 
免疫原	Synthetic peptide: (C) FHPAREKVLRSV , corresponding to C terminal amino acids 611-622 of Human ZDHHC13 Peptide is available as <b><u>ab45682 - ZDHHC13 peptide (611-622)</u></b>  <b><u>Run BLAST with</u></b>  <b><u>Run BLAST with</u></b>

常规说明	<p>The Life Science industry has been in the grips of a reproducibility crisis for a number of years. Abcam is leading the way in addressing this with our range of recombinant monoclonal antibodies and knockout edited cell lines for gold-standard validation. Please check that this product meets your needs before purchasing.</p> <p>If you have any questions, special requirements or concerns, please send us an inquiry and/or contact our Support team ahead of purchase. Recommended alternatives for this product can be found below, along with publications, customer reviews and Q&amp;As</p>
------	---

### 性能

形式	Liquid
存放说明	Shipped at 4°C. Upon delivery aliquot and store at -20°C or -80°C. Avoid repeated freeze / thaw cycles.
存储溶液	pH: 7.30 Preservative: 0.02% Sodium azide Constituents: 0.5% Tris, 0.5% BSA
纯度	Immunogen affinity purified
纯化说明	This antibody was purified from goat serum by ammonium sulphate precipitation followed by

antigen affinity chromatography using the immunizing peptide.

克隆

多克隆

同种型

IgG

## 应用

### The Abpromise guarantee

**Abpromise™**承诺保证使用ab28759于以下的经测试应用

“应用说明”部分 下显示的仅为推荐的起始稀释度;实际最佳的稀释度/浓度应由使用者检定。

应用	Ab评论	说明
WB		

### 应用说明

WB: Use at a concentration of 0.1 - 3 µg/ml.  
This antibody gave a positive result in ELISA against the immunizing peptide.  
Antibody detection limit dilution 1:32,000.  
  
Not yet tested in other applications.  
Optimal dilutions/concentrations should be determined by the end user.

## 靶标

### 功能

Palmitoyltransferase for HD and GAD2 (By similarity). Mediates Mg(2+) transport.

### 序列相似性

Belongs to the DHHC palmitoyltransferase family. AKR/ZDHHC17 subfamily.  
Contains 6 ANK repeats.  
Contains 1 DHHC-type zinc finger.

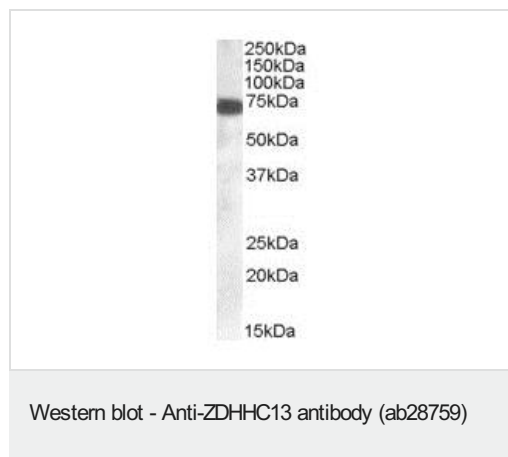
### 结构域

The DHHC domain is required for palmitoyltransferase activity.

### 细胞定位

Golgi apparatus membrane. Cytoplasmic vesicle membrane. Low extracellular Mg(2+) induces increase in Golgi and in post-Golgi vesicles.

## 图片



Anti-ZDHHC13 antibody (ab28759) at 0.1 µg/ml + Human cerebellum lysate at 35 µg

Developed using the ECL technique.

Primary antibody was incubated for 1 hour.

**Please note:** All products are "FOR RESEARCH USE ONLY. NOT FOR USE IN DIAGNOSTIC PROCEDURES"

### **Our Abpromise to you: Quality guaranteed and expert technical support**

---

- Replacement or refund for products not performing as stated on the datasheet
- Valid for 12 months from date of delivery
- Response to your inquiry within 24 hours
- We provide support in Chinese, English, French, German, Japanese and Spanish
- Extensive multi-media technical resources to help you
- We investigate all quality concerns to ensure our products perform to the highest standards

If the product does not perform as described on this datasheet, we will offer a refund or replacement. For full details of the Abpromise, please visit <https://www.abcam.cn/abpromise> or contact our technical team.

### **Terms and conditions**

---

- Guarantee only valid for products bought direct from Abcam or one of our authorized distributors