

Anti-ZCCHC6 antibody ab76901

3 图像

概述	
产品名称	Anti-ZCCHC6抗体
描述	小鼠多克隆抗体to ZCCHC6
宿主	Mouse
经测试应用	适用于: WB, IHC-P
种属反应性	与反应: Human
免疫原	Full length human ZCCHC6 protein (aa 1-412 of AAH32456 or Swissprot id Q5VYS8-5).
阳性对照	Human liver tissue lysate; ZCCHC6 transfected 293T cell lysate.
常规说明	<p>The Life Science industry has been in the grips of a reproducibility crisis for a number of years. Abcam is leading the way in addressing this with our range of recombinant monoclonal antibodies and knockout edited cell lines for gold-standard validation. Please check that this product meets your needs before purchasing.</p> <p>If you have any questions, special requirements or concerns, please send us an inquiry and/or contact our Support team ahead of purchase. Recommended alternatives for this product can be found below, along with publications, customer reviews and Q&amp;As</p>
性能	
形式	Liquid
存放说明	Shipped at 4°C. Upon delivery aliquot. Store at -20°C or -80°C. Avoid freeze / thaw cycle.
存储溶液	pH: 7.40 Constituent: 100% PBS
纯度	Protein A purified
克隆	多克隆
同种型	IgG
应用	

The Abpromise guarantee      **Abpromise™**承诺保证使用ab76901于以下的经测试应用

“应用说明”部分 下显示的仅为推荐的起始稀释度;实际最佳的稀释度/浓度应由使用者检定。

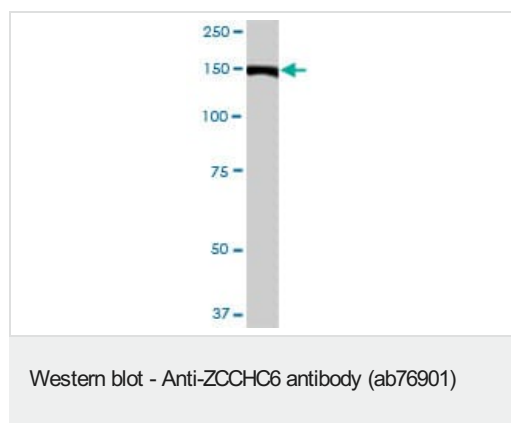
应用	Ab评论	说明
WB		Use a concentration of 1 - 5 µg/ml. Predicted molecular weight: 171, 48 kDa. Predicted molecular weight, isoform 1: 171 kDa, isoform 5: 48 kDa.
IHC-P		1/50.

## 靶标

## 相关性

ZCCHC6 contains 3 CCHC-type zinc fingers.

## 图片



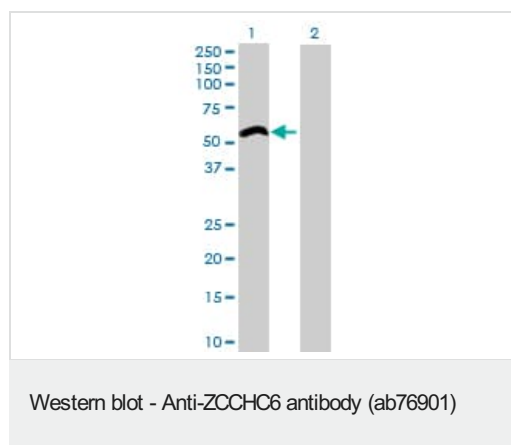
Anti-ZCCHC6 antibody (ab76901) at 5 µg/ml + human liver tissue lysate at 25 µg

### Secondary

Goat Anti-Mouse IgG (H&L)-HRP at 1/2500 dilution

**Predicted band size:** 171, 48 kDa

**Observed band size:** 150 kDa



**All lanes :** Anti-ZCCHC6 antibody (ab76901) at 5 µg/ml

**Lane 1 :** ZCCHC6 transfected 293T cell lysate

**Lane 2 :** Non transfected 293T cell lysate

Lysates/proteins at 25 µg per lane.

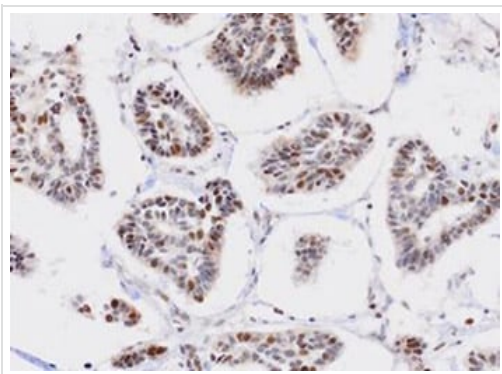
### Secondary

**All lanes :** Goat Anti-Mouse IgG (H&L)-HRP at 1/2500 dilution

**Predicted band size:** 171, 48 kDa

**Observed band size:** 53 kDa

Note: predicted molecular weight for isoform 5 is 48 kDa.



Immunohistochemistry (Formalin/PFA-fixed paraffin-embedded sections) - Anti-ZCCHC6 antibody (ab76901)

ab76901 staining ZCCHC6 in human breast cancer tissue section by Immunohistochemistry (Formalin/ PFA fixed paraffin-embedded tissue sections). Tissue underwent antigen retrieval in 0.1 sodium citrate buffer. The primary antibody was used at 1/50 dilution and incubated with sample for 2 hours. The DAB staining method was used for detection.

**Please note:** All products are "FOR RESEARCH USE ONLY. NOT FOR USE IN DIAGNOSTIC PROCEDURES"

### Our Abpromise to you: Quality guaranteed and expert technical support

---

- Replacement or refund for products not performing as stated on the datasheet
- Valid for 12 months from date of delivery
- Response to your inquiry within 24 hours
- We provide support in Chinese, English, French, German, Japanese and Spanish
- Extensive multi-media technical resources to help you
- We investigate all quality concerns to ensure our products perform to the highest standards

If the product does not perform as described on this datasheet, we will offer a refund or replacement. For full details of the Abpromise, please visit <https://www.abcam.cn/abpromise> or contact our technical team.

### Terms and conditions

---

- Guarantee only valid for products bought direct from Abcam or one of our authorized distributors