

Anti-YTHDF2 antibody [EPR20318] ab220163

敲除验证
重组
RabMAb

★★★★★
[3 Abreviews](#)
[43 References](#)
[6 图像](#)

概述

产品名称	Anti-YTHDF2抗体[EPR20318]
描述	兔单克隆抗体[EPR20318] to YTHDF2
宿主	Rabbit
经测试应用	适用于: WB, IP 不适用于: Flow Cyt, ICC/IF or IHC-P
种属反应性	与反应: Mouse, Rat, Human
免疫原	Synthetic peptide. This information is proprietary to Abcam and/or its suppliers.
阳性对照	WB: Wild-type mESC, HEK-293T, HT-1080 treated with 10μM MG-132 for 4 hours, K562, HEK-293 and HeLa whole cell lysate. Human brain, mouse and rat testis tissue lysate; GST-tagged human YTHDF2 recombinant protein. IP: HepG2 cells
常规说明	<p>This product is a recombinant monoclonal antibody, which offers several advantages including:</p> <ul style="list-style-type: none"> - High batch-to-batch consistency and reproducibility - Improved sensitivity and specificity - Long-term security of supply - Animal-free production <p>For more information see here.</p> <p>Our RabMAb[®] technology is a patented hybridoma-based technology for making rabbit monoclonal antibodies. For details on our patents, please refer to RabMAb[®] patents.</p>

性能

形式	Liquid
存放说明	Shipped at 4°C. Store at +4°C short term (1-2 weeks). Upon delivery aliquot. Store at -20°C long term. Avoid freeze / thaw cycle.
存储溶液	pH: 7.2 Preservative: 0.01% Sodium azide Constituents: PBS, 40% Glycerol (glycerin, glycerine), 0.05% BSA
纯度	Protein A purified
克隆	单克隆
克隆编号	EPR20318

同种型IgG

应用

The Abpromise guarantee **Abpromise™**承诺保证使用ab220163于以下的经测试应用

“应用说明”部分 下显示的仅为推荐的起始稀释度;实际最佳的稀释度/浓度应由使用者检定。

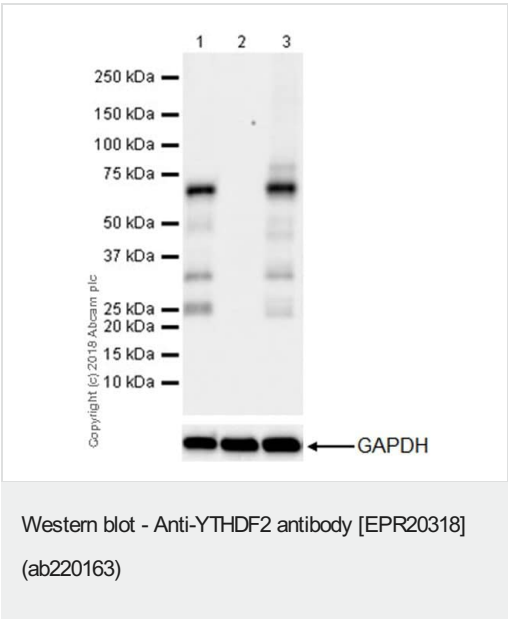
应用	Ab评论	说明
WB	★★★★★ (2)	1/1000. Predicted molecular weight: 62 kDa.
IP		1/30.

应用说明 Is unsuitable for Flow Cyt, ICC/IF or IHC-P.

靶标

序列相似性 Contains 1 YTH domain.

图片



All lanes : Anti-YTHDF2 antibody [EPR20318] (ab220163) at 1/1000 dilution

Lane 1 : Wild-type mESC (mouse embryo stem cell) whole cell lysate

Lane 2 : YTHDF2 knockout mESC whole cell lysate

Lane 3 : HeLa (human cervix adenocarcinoma epithelial cell) whole cell lysate

Lysates/proteins at 20 µg per lane.

Secondary

All lanes : Goat Anti-Rabbit IgG H&L (HRP) (**ab97051**) at 1/100000 dilution

Predicted band size: 62 kDa

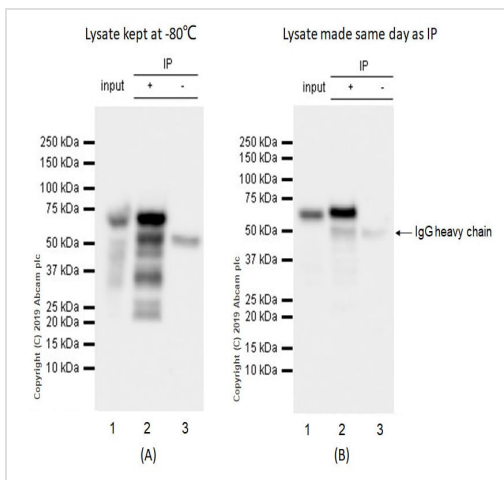
Exposure time: 48 seconds

Blocking/Diluting buffer and concentration: 5% NFDM/TBST

The wild-type and YTHDF2 knockout cell lysates were kindly

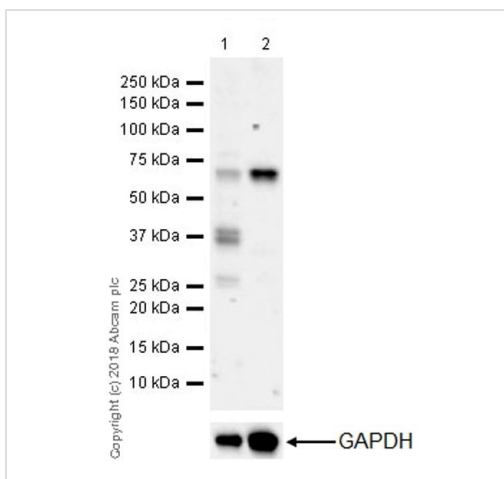
provided by an anonymous collaborator.

ab220163 was shown to specifically react with YTHDF2 in wild-type mESC cells as signal was lost in YTHDF2 knockout cells. Wild-type and YTHDF2 knockout samples were subjected to SDS-PAGE. ab220163 and **ab181602** (Rabbit anti-GAPDH loading control) were incubated 1 hour at room temperature at 1/1000 dilution and 1/200,000 dilution respectively. Blots were developed with Goat Anti-Rabbit IgG, (H+L), Peroxidase conjugated (**ab97051**) secondary antibody at 1/100,000 dilution for 1 hour at room temperature before imaging. The blot was developed on a BIO-RAD® ChemiDoc™ MP instrument using the ECL technique.



ab220163 Immunoprecipitating YTHDF2 in human HepG2 whole cell lysate. 10 µg of cell lysate was incubated with primary antibody (1/30). For western blotting ab220163 (1/1000) was used to confirm successful immunoprecipitation. VeriBlot for IP Detection Reagent (HRP) (**ab131366**) was used for detection at (1/5000). For lane 3 Rabbit monoclonal IgG (**ab172730**) was used instead of ab220163.

In panel A, the lysate was stored at -80°C prior to the IP and incubation with the primary antibody was carried out overnight. In panel B, lysate was freshly made and used in the IP test immediately to minimize protein degradation. The incubation time was also shortened from overnight to 2h.



All lanes : Anti-YTHDF2 antibody [EPR20318] (ab220163) at 1/5000 dilution

Lane 1 : Untreated HT-1080 (human fibrosarcoma epithelial cell) whole cell lysate at 20 µg

Lane 2 : HT-1080 treated with 10µM MG-132 (**ab141003**) for 4 hours, whole cell lysate at 10 µg

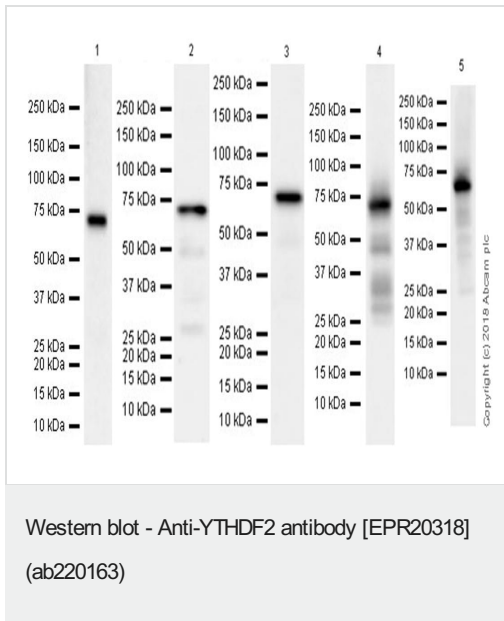
Secondary

All lanes : Goat Anti-Rabbit IgG H&L (HRP) (**ab97051**) at 1/100000 dilution

Predicted band size: 62 kDa

Exposure time: 103 seconds

Blocking/diluting buffer and concentration: 5% NFDM/TBST.



All lanes : Anti-YTHDF2 antibody [EPR20318] (ab220163) at 1/1000 dilution

Lane 1 : Human brain tissue lysate

Lane 2 : Mouse testis tissue lysate

Lane 3 : Rat testis tissue lysate

Lane 4 : HEK-293 (human embryonic kidney epithelial cell) whole cell lysate

Lane 5 : K562 (human chronic myelogenous leukemia lymphoblast) whole cell lysate

Lysates/proteins at 10 µg per lane.

Secondary

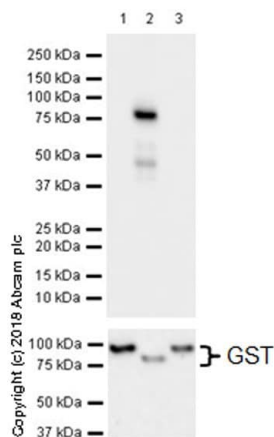
Lane 1 : VeriBlot for IP Detection Reagent (HRP) ([ab131366](#)) at 1/1000 dilution

Lanes 2-5 : Goat Anti-Rabbit IgG H&L (HRP) ([ab97051](#)) at 1/100000 dilution

Predicted band size: 62 kDa

Blocking/diluting buffer and concentration: 5% NFDM/TBST

Exposure time: Lane 1: 3 minutes; Lane 2: 92 seconds; Lane 3: 37 seconds; Lane 4: 8 seconds; Lane 5: 15 seconds.



Western blot - Anti-YTHDF2 antibody [EPR20318] (ab220163)

All lanes : Anti-YTHDF2 antibody [EPR20318] (ab220163) at 1/1000 dilution

Lane 1 : GST-tagged human YTHDF1 recombinant protein, 20ng

Lane 2 : GST-tagged human YTHDF2 recombinant protein, 20ng

Lane 3 : GST-tagged human YTHDF3 recombinant protein, 20ng

Secondary

All lanes : Goat Anti-Rabbit IgG H&L (HRP) ([ab97051](#)) at 1/100000 dilution

Predicted band size: 62 kDa

Exposure time: 3 seconds

Blocking/diluting buffer and concentration: 5% NFDM/TBST.

The YTHDF recombinant proteins were kindly provided by an anonymous collaborator.

Why choose a recombinant antibody?



Research with confidence
Consistent and reproducible results



Long-term and scalable supply
Recombinant technology



Success from the first experiment
Confirmed specificity



Ethical standards compliant
Animal-free production

Anti-YTHDF2 antibody [EPR20318] (ab220163)

Please note: All products are "FOR RESEARCH USE ONLY. NOT FOR USE IN DIAGNOSTIC PROCEDURES"

Our Abpromise to you: Quality guaranteed and expert technical support

- Replacement or refund for products not performing as stated on the datasheet
- Valid for 12 months from date of delivery
- Response to your inquiry within 24 hours
- We provide support in Chinese, English, French, German, Japanese and Spanish

- Extensive multi-media technical resources to help you
- We investigate all quality concerns to ensure our products perform to the highest standards

If the product does not perform as described on this datasheet, we will offer a refund or replacement. For full details of the Abpromise, please visit <https://www.abcam.cn/abpromise> or contact our technical team.

Terms and conditions

- Guarantee only valid for products bought direct from Abcam or one of our authorized distributors