


Anti-Wwp2 antibody ab103527

15 References **3 图像**

概述

产品名称	Anti-Wwp2抗体
描述	兔多克隆抗体to Wwp2
宿主	Rabbit
经测试应用	适用于: WB, IP
种属反应性	与反应: Mouse, Human 预测可用于: Chimpanzee, Rhesus monkey, Gorilla, Orangutan 
免疫原	Synthetic peptide corresponding to Human Wwp2 aa 200-300. Database link: O00308
阳性对照	HeLa, 293T, Jurkat and mouse NIH3T3 whole cell lysate
常规说明	<p>The Life Science industry has been in the grips of a reproducibility crisis for a number of years. Abcam is leading the way in addressing this with our range of recombinant monoclonal antibodies and knockout edited cell lines for gold-standard validation. Please check that this product meets your needs before purchasing.</p> <p>If you have any questions, special requirements or concerns, please send us an inquiry and/or contact our Support team ahead of purchase. Recommended alternatives for this product can be found below, along with publications, customer reviews and Q&As</p>

性能

形式	Liquid
存放说明	Shipped at 4°C. Upon delivery aliquot and store at -20°C. Avoid freeze / thaw cycles.
存储溶液	pH: 7 Preservative: 0.09% Sodium azide Constituent: Tris citrate/phosphate
纯度	Immunogen affinity purified
克隆	多克隆
同种型	IgG

应用

The Abpromise guarantee

Abpromise™承诺保证使用ab103527于以下的经测试应用

“应用说明”部分 下显示的仅为推荐的起始稀释度;实际最佳的稀释度/浓度应由使用者检定。

应用	Ab评论	说明
WB		1/2000 - 1/10000. Predicted molecular weight: 99 kDa.
IP		Use at 2-5 µg/mg of lysate.

靶标

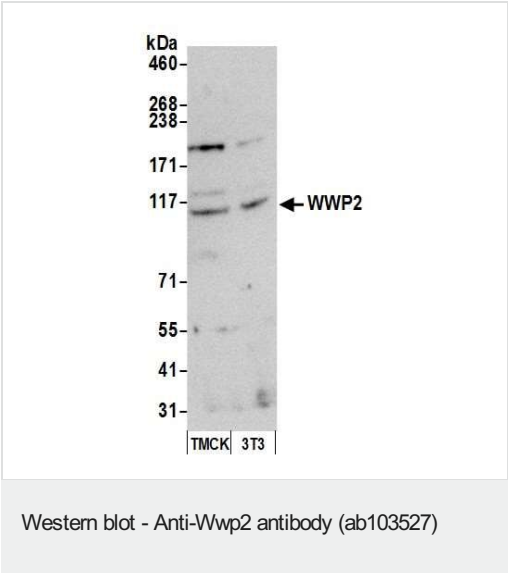
相关性

Wwp2 is a HECT domain containing E3 ubiquitin protein ligase. Wwp2 specifically interacts with Rpb1 and is responsible for targeting it for ubiquitination.

细胞定位

Nuclear

图片



All lanes : Anti-Wwp2 antibody (ab103527) at 0.1 µg/ml

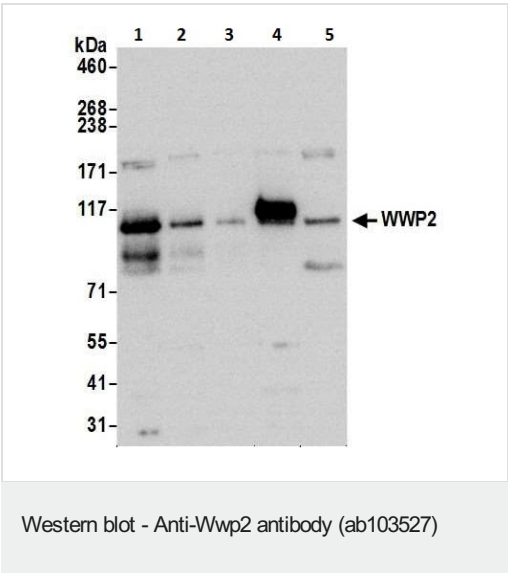
Lane 1 : TCMK-1 (mouse kidney epithelial cell line) whole cell lysate

Lane 2 : NIH/3T3 (mouse embryo fibroblast cell line) whole cell lysate

Lysates/proteins at 50 µg per lane.

Predicted band size: 99 kDa

Exposure time: 30 seconds



All lanes : Anti-Wwp2 antibody (ab103527) at 0.1 µg/ml

Lane 1 : 293T cell lysate at 50 µg

Lane 2 : 293T cell lysate at 15 µg

Lane 3 : 293T cell lysate at 5 µg

Lane 4 : HeLa cell lysate at 50 µg

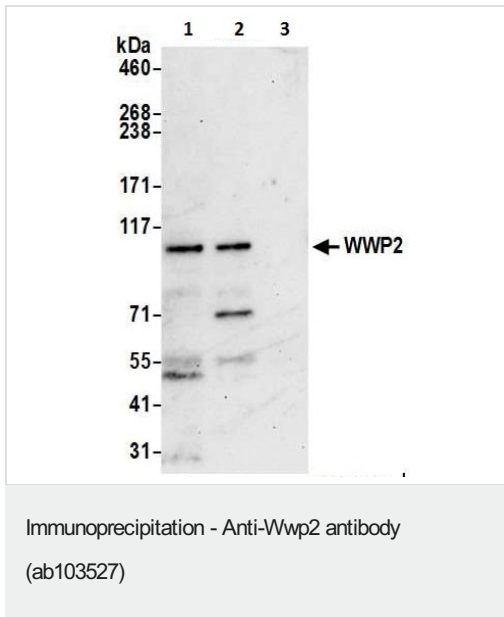
Lane 5 : Jurkat cell lysate at 50 µg

Predicted band size: 99 kDa

Exposure time: 30 seconds

Cells were prepared using NETN lysis buffer.

Detection: Chemiluminescence



ab103527 at 1 used at 6 µg/reaction immunoprecipitating Wwp2 in HEK293T cell lysate.

Lane 1: ab103527 + HEK293T cell lysate

Lane 2: Rabbit anti-WWP2 Antibody instead of ab103527 in HEK293T cell lysate

Lane 3: Control IgG instead of **ab32562** in HEK293T cell lysate.

For blotting ab103527 was used at 1 µg/mL.

Detection: Chemiluminescence

Exposure time: 30 seconds

Please note: All products are "FOR RESEARCH USE ONLY. NOT FOR USE IN DIAGNOSTIC PROCEDURES"

Our Abpromise to you: Quality guaranteed and expert technical support

- Replacement or refund for products not performing as stated on the datasheet
- Valid for 12 months from date of delivery
- Response to your inquiry within 24 hours
- We provide support in Chinese, English, French, German, Japanese and Spanish
- Extensive multi-media technical resources to help you
- We investigate all quality concerns to ensure our products perform to the highest standards

If the product does not perform as described on this datasheet, we will offer a refund or replacement. For full details of the Abpromise, please visit <https://www.abcam.cn/abpromise> or contact our technical team.

Terms and conditions

- Guarantee only valid for products bought direct from Abcam or one of our authorized distributors