


Anti-WWP1 antibody ab43791

★★★★★ [1 Abreviews](#) [9 References](#) [2 图像](#)

| | |
|-------|---|
| 概述 | |
| 产品名称 | Anti-WWP1抗体 |
| 描述 | 兔多克隆抗体to WWP1 |
| 宿主 | Rabbit |
| 特异性 | From Mar 2024, QC testing of replenishment batches of this polyclonal changed. All tested and expected application and reactive species combinations are still covered by our Abcam product promise. However, we no longer test all applications. For more information on a specific batch, please contact our Scientific Support who will be happy to help. |
| 经测试应用 | 适用于: ICC, WB |
| 种属反应性 | 与反应: Human 预测可用于: Mouse, Rat, Cow  |
| 免疫原 | Synthetic peptide corresponding to Human WWP1 aa 200-300 conjugated to keyhole limpet haemocyanin. (Peptide available as ab43790) |
| 阳性对照 | WB: HeLa and MCF7 whole cell lysate. ICC: A431 cells. |
| 常规说明 | <p>The Life Science industry has been in the grips of a reproducibility crisis for a number of years. Abcam is leading the way in addressing this with our range of recombinant monoclonal antibodies and knockout edited cell lines for gold-standard validation. Please check that this product meets your needs before purchasing.</p> <p>If you have any questions, special requirements or concerns, please send us an inquiry and/or contact our Support team ahead of purchase. Recommended alternatives for this product can be found below, along with publications, customer reviews and Q&As</p> |
| 性能 | |
| 形式 | Liquid |
| 存放说明 | Shipped at 4°C. Store at +4°C short term (1-2 weeks). Upon delivery aliquot. Store at -20°C or -80°C. Avoid freeze / thaw cycle. |
| 存储溶液 | pH: 7.40 Preservative: 0.02% Sodium azide Constituent: PBS |

Batches of this product that have a concentration < 1mg/ml may have BSA added as a stabilising agent. If you would like information about the formulation of a specific lot, please contact our scientific support team who will be happy to help.

| | |
|-----|-----------------------------|
| 纯度 | Immunogen affinity purified |
| 克隆 | 多克隆 |
| 同种型 | IgG |

应用

The Abpromise guarantee Abpromise™ 承诺保证使用ab43791于以下的经测试应用

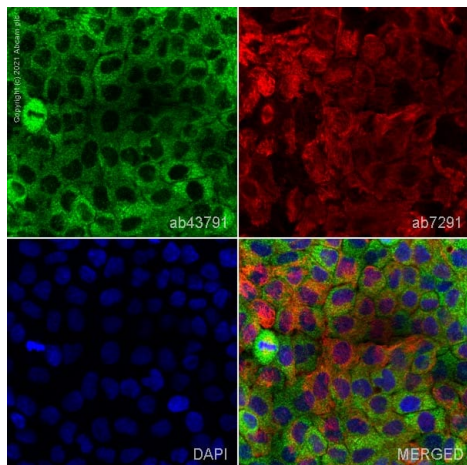
“应用说明”部分 下显示的仅为推荐的起始稀释度;实际最佳的稀释度/浓度应由使用者检定。

| 应用 | Ab评论 | 说明 |
|-----|------|--|
| ICC | | Use a concentration of 1 µg/ml. |
| WB | | Use a concentration of 1 µg/ml. Detects a band of approximately 105 kDa (predicted molecular weight: 105 kDa). |

靶标

| | |
|------|--|
| 相关性 | WWP1 is an E3 ubiquitin ligase and belongs to a family of NEDD4-like proteins. WWP1 contains 4 tandem WW domains and a HECT (homologous to the E6-associated protein carboxyl terminus) domain. WW domain-containing proteins are found in all eukaryotes and play an important role in the regulation of a wide variety of cellular functions such as protein degradation, transcription, and RNA splicing. The HECT domain of WWP1 has been implicated in regulating the localization and stability of p53 – inhibition of WWP1 results in a decrease in p53 expression, whilst WWP1 mediated stabilization of p53 appears to be associated with an accumulation of cytoplasmic p53. WWP1 also negatively regulates the TGF beta tumor suppressor pathway by inactivating its molecular components (SMAD2, SMAD4 and TGFbetaR1). WWP1 has been implicated in both breast and prostate cancers. |
| 细胞定位 | Cell Membrane, Cytoplasmic and Nuclear |

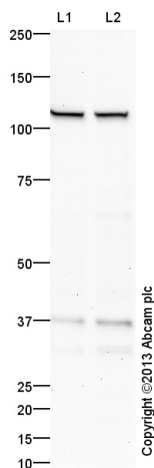
图片



Immunocytochemistry - Anti-WWP1 antibody
(ab43791)

ab43791 staining WWP1 in A431 cells. The cells were fixed with 4% paraformaldehyde (10 min), permeabilized with 0.1% PBS-Tween for 5 minutes and then blocked with 1% BSA/10% normal goat serum/0.3M glycine in 0.1%PBS-Tween for 1h. The cells were then incubated overnight at 4°C with ab43791 at 1µg/ml and **ab7291**, Mouse monoclonal [DM1A] to alpha Tubulin - Loading Control. Cells were then incubated with **ab150081**, Goat polyclonal Secondary Antibody to Rabbit IgG - H&L (Alexa Fluor® 488), pre-adsorbed at 1/1000 dilution (shown in green) and **ab150120**, Goat polyclonal Secondary Antibody to Mouse IgG - H&L (Alexa Fluor® 594), pre-adsorbed at 1/1000 dilution (shown in pseudocolour red). Nuclear DNA was labelled with DAPI (shown in blue).

Image was acquired with a confocal microscope (Leica-Microsystems TCS SP8) and a single confocal section is shown.



Western blot - Anti-WWP1 antibody (ab43791)

All lanes : Anti-WWP1 antibody (ab43791) at 1 µg/ml

Lane 1 : MCF7 (Human breast adenocarcinoma cell line) Whole Cell Lysate

Lane 2 : HeLa (Human epithelial carcinoma cell line) Whole Cell Lysate

Lysates/proteins at 10 µg per lane.

Secondary

All lanes : Goat polyclonal to Rabbit IgG - H&L - Pre-Adsorbed (HRP) at 1/50000 dilution

Developed using the ECL technique.

Performed under reducing conditions.

Predicted band size: 105 kDa

Observed band size: 105 kDa

Additional bands at: 36 kDa. We are unsure as to the identity of these extra bands.

Exposure time: 8 minutes

This blot was produced using a 4-12% Bis-tris gel under the MOPS buffer system. The gel was run at 200V for 50 minutes before being transferred onto a Nitrocellulose membrane at 30V for 70 minutes. The membrane was then blocked for an hour using 2% Bovine Serum Albumin before being incubated with ab43791 overnight at 4°C. Antibody binding was detected using an anti-rabbit antibody conjugated to HRP, and visualised using ECL development solution **ab133406**.

Please note: All products are "FOR RESEARCH USE ONLY. NOT FOR USE IN DIAGNOSTIC PROCEDURES"

Our Abpromise to you: Quality guaranteed and expert technical support

- Replacement or refund for products not performing as stated on the datasheet
- Valid for 12 months from date of delivery
- Response to your inquiry within 24 hours
- We provide support in Chinese, English, French, German, Japanese and Spanish
- Extensive multi-media technical resources to help you
- We investigate all quality concerns to ensure our products perform to the highest standards

If the product does not perform as described on this datasheet, we will offer a refund or replacement. For full details of the Abpromise, please visit <https://www.abcam.cn/abpromise> or contact our technical team.

Terms and conditions

- Guarantee only valid for products bought direct from Abcam or one of our authorized distributors