



Anti-WSX-1 antibody ab5997

2 References **3 图像**

概述

产品名称	Anti-WSX-1抗体
描述	兔多克隆抗体to WSX-1
宿主	Rabbit
经测试应用	适用于: WB, ICC/IF, IHC-P
种属反应性	与反应: Human
免疫原	Synthetic peptide corresponding to Human WSX-1 aa 44-59 (N terminal). Sequence: GSAGPLQCYGVGPLGD
	<div>  Run BLAST with </div> <div>  Run BLAST with </div>
阳性对照	Human spleen tissue lysate.
常规说明	<p>The Life Science industry has been in the grips of a reproducibility crisis for a number of years. Abcam is leading the way in addressing this with our range of recombinant monoclonal antibodies and knockout edited cell lines for gold-standard validation. Please check that this product meets your needs before purchasing.</p> <p>If you have any questions, special requirements or concerns, please send us an inquiry and/or contact our Support team ahead of purchase. Recommended alternatives for this product can be found below, along with publications, customer reviews and Q&As</p>

性能

形式	Liquid
存放说明	Shipped at 4°C. Store at +4°C short term (1-2 weeks). Store at -20°C long term. Avoid freeze / thaw cycle.
存储溶液	pH: 7.2 Preservative: 0.02% Sodium azide Constituent: PBS
纯度	Immunogen affinity purified
克隆	多克隆
同种型	IgG

应用

The Abpromise guarantee **Abpromise™**承诺保证使用ab5997于以下的经测试应用

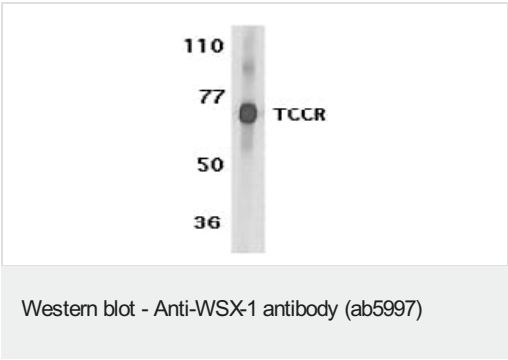
“应用说明”部分 下显示的仅为推荐的起始稀释度;实际最佳的稀释度/浓度应由使用者检定。

应用	Ab评论	说明
WB		Use a concentration of 0.5 - 1 µg/ml. Detects a band of approximately 70 kDa.
ICC/IF		Use a concentration of 20 µg/ml.
IHC-P		Use a concentration of 10 µg/ml.

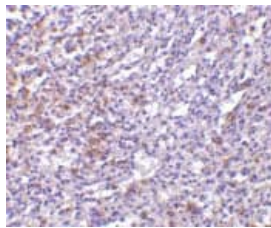
靶标

功能	Receptor for IL27. Requires IL6ST/gp130 to mediate signal transduction in response to IL27. This signaling system acts through STAT3 and STAT1. Involved in the regulation of Th1-type immune responses. Also appears to be involved in innate defense mechanisms.
组织特异性	Highly expressed in lymphoid tissues such as spleen, lymph nodes and peripheral blood leukocytes. Weakly expressed in other tissues examined including heart, brain, fetal and adult lung, liver, skeletal muscle, kidney, pancreas, prostate, testis, ovary, small intestine, kidney and colon. In the lymphoid system, higher level expression in CD4+ T-cell subsets than in CD8+ T-cell subsets. Also weaker expression in CD19+ B-cells and monocytes.
序列相似性	Belongs to the type I cytokine receptor family. Type 2 subfamily. Contains 3 fibronectin type-III domains.
结构域	The WSXWS motif appears to be necessary for proper protein folding and thereby efficient intracellular transport and cell-surface receptor binding. The box 1 motif is required for JAK interaction and/or activation.
细胞定位	Membrane.

图片



Western blot analysis of WSX-1 expression in human spleen tissue lysates with ab5997 at 1 µg /ml. Western blot analysis of WSX-1 expression in human spleen tissue lysates with ab5997 at 1 µg /ml.



Immunohistochemistry (Formalin/PFA-fixed paraffin-embedded sections) - Anti-WSX-1 antibody (ab5997)

ab5997 at 10µg/ml staining WSX-1 in human spleen tissue by IHC

Immunocytochemistry/ Immunofluorescence - Anti-WSX-1 antibody (ab5997)

Immunofluorescence of WSX-1 in A549 cells using ab5997 at 20 µg/ml.

Please note: All products are "FOR RESEARCH USE ONLY. NOT FOR USE IN DIAGNOSTIC PROCEDURES"

Our Abpromise to you: Quality guaranteed and expert technical support

- Replacement or refund for products not performing as stated on the datasheet
- Valid for 12 months from date of delivery
- Response to your inquiry within 24 hours
- We provide support in Chinese, English, French, German, Japanese and Spanish
- Extensive multi-media technical resources to help you
- We investigate all quality concerns to ensure our products perform to the highest standards

If the product does not perform as described on this datasheet, we will offer a refund or replacement. For full details of the Abpromise, please visit <https://www.abcam.cn/abpromise> or contact our technical team.

Terms and conditions

- Guarantee only valid for products bought direct from Abcam or one of our authorized distributors