

Anti-WIP1 antibody [EPR8110] ab128901

重组 RabMAb

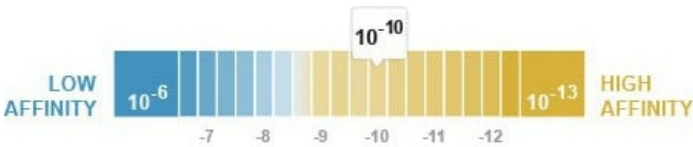
★★★★★ 1 Abreviews 5 References 4 图像

概述

产品名称	Anti-WIP1抗体[EPR8110]
描述	兔单克隆抗体[EPR8110] to WIP1
宿主	Rabbit
经测试应用	适用于: WB, IHC-P 不适用于: Flow Cyt, ICC/IF or IP
种属反应性	与反应: Mouse, Rat, Human
免疫原	Synthetic peptide within Human WIP1 aa 50-150. The exact sequence is proprietary.
阳性对照	A375, BxPC3, 293T, C6, RAW264.7, NIH 3T3, and JAR cell lysates; Human colon tissue.
常规说明	This product is a recombinant monoclonal antibody, which offers several advantages including: - High batch-to-batch consistency and reproducibility - Improved sensitivity and specificity - Long-term security of supply - Animal-free production For more information <a href="#">see here</a> . Our RabMAb <sup>®</sup> technology is a patented hybridoma-based technology for making rabbit monoclonal antibodies. For details on our patents, please refer to <a href="#">RabMAb<sup>®</sup> patents</a> .

性能

形式	Liquid
存放说明	Shipped at 4°C. Store at -20°C. Stable for 12 months at -20°C.
解离常数 (K <sub>D</sub> )	K <sub>D</sub> = 1.14 x 10 <sup>-10</sup> M



[Learn more about K<sub>D</sub>](#)

存储溶液	pH: 7.20 Preservative: 0.01% Sodium azide Constituents: 9% PBS, 40% Glycerol (glycerin, glycerine), 0.05% BSA, 50% Tissue culture
------	---

纯度	supernatant
克隆	Protein A purified
克隆编号	单克隆
同种型	EPR8110
	IgG

## 应用

**The Abpromise guarantee**      **Abpromise™**承诺保证使用ab128901于以下的经测试应用

“应用说明”部分下显示的仅为推荐的起始稀释度;实际最佳的稀释度/浓度应由使用者检定。

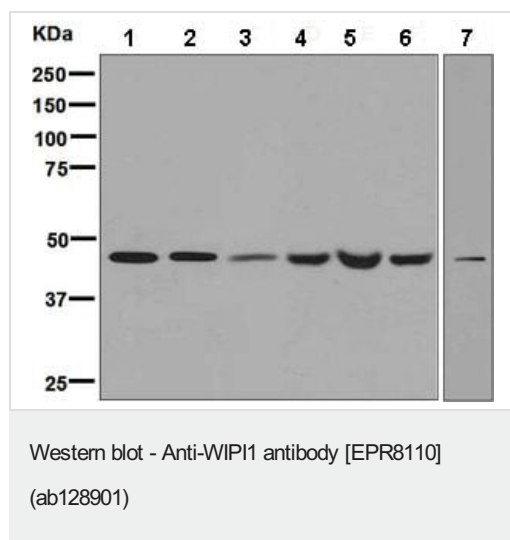
应用	Ab评论	说明
<b>WB</b>		1/1000 - 1/10000. Detects a band of approximately 49 kDa (predicted molecular weight: 49 kDa).
<b>IHC-P</b>		1/50 - 1/100. Perform heat mediated antigen retrieval before commencing with IHC staining protocol.

**应用说明** Is unsuitable for Flow Cyt, ICC/IF or IP.

靶标

<b>功能</b>	May play a role in autophagy. May regulate the trafficking of proteins involved in the mannose-6-phosphate receptor (MPR) recycling pathway.
<b>组织特异性</b>	Ubiquitously expressed. Highly expressed in skeletal muscle, heart, testis, pancreas and placenta. Highly expressed in G361, Sk-mel-28, Sk-mel-13, WM852 and WM451 cells. Up-regulated in a variety of tumor tissues.
<b>序列相似性</b>	Belongs to the WD repeat SVP1 family. Contains 3 WD repeats.
<b>细胞定位</b>	Golgi apparatus > trans-Golgi network. Endosome. Cytoplasmic vesicle > clathrin-coated vesicle. Trans elements of the Golgi and peripheral endosomes. Dynamically cycles through these compartments and is susceptible to conditions that modulate membrane flux. Enriched in clathrin-coated vesicles.

图片



**All lanes :** Anti-WIP11 antibody [EPR8110] (ab128901) at 1/1000 dilution

**Lane 1 :** A375 cell lysate

**Lane 2 :** BxPC-3 cell lysate

**Lane 3 :** 293T (Human embryonic kidney epithelial cell) cell lysate

**Lane 4 :** C6 cell lysate

**Lane 5 :** RAW 264.7 cell lysate

**Lane 6 :** NIH/3T3 cell lysate

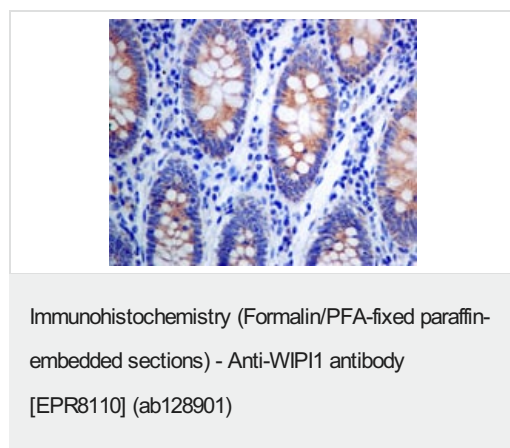
**Lane 7 :** JAR cell lysate

Lysates/proteins at 10 µg per lane.

### Secondary

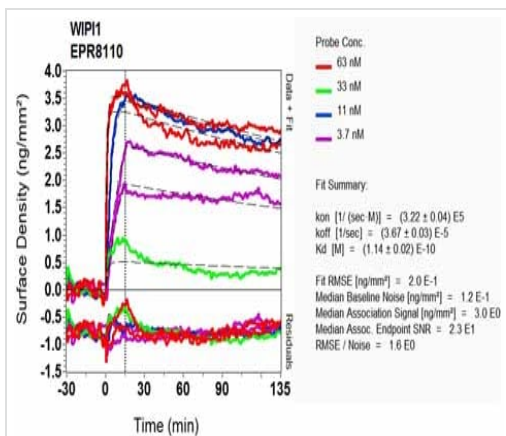
**All lanes :** Goat anti-Rabbit HRP at 1/2000 dilution

**Predicted band size:** 49 kDa



ab128901 at 1/50 dilution staining WIP11 in Paraffin-embedded Human colon tissue by Immunohistochemistry.

Perform heat mediated antigen retrieval before commencing with IHC staining protocol.

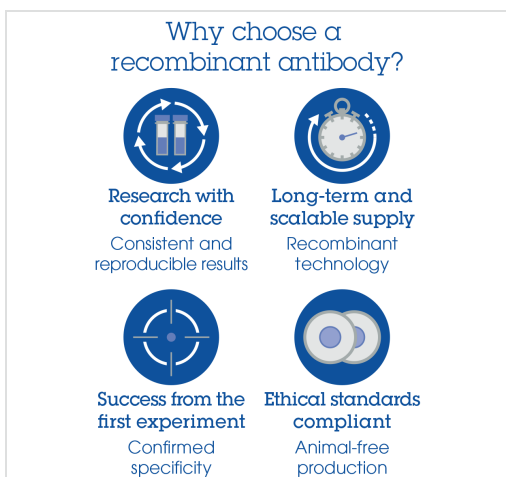


SPR Scanning - Anti-WIP1 antibody [EPR8110]  
(ab128901)

Equilibrium dissociation constant ( $K_D$ )

Learn more about  $K_D$

[Click here to learn more about  \$K\_D\$](#)



Anti-WIP1 antibody [EPR8110] (ab128901)

**Please note:** All products are "FOR RESEARCH USE ONLY. NOT FOR USE IN DIAGNOSTIC PROCEDURES"

## Our Abpromise to you: Quality guaranteed and expert technical support

- Replacement or refund for products not performing as stated on the datasheet
- Valid for 12 months from date of delivery
- Response to your inquiry within 24 hours
- We provide support in Chinese, English, French, German, Japanese and Spanish
- Extensive multi-media technical resources to help you

- We investigate all quality concerns to ensure our products perform to the highest standards

If the product does not perform as described on this datasheet, we will offer a refund or replacement. For full details of the Abpromise, please visit <https://www.abcam.cn/abpromise> or contact our technical team.

### **Terms and conditions**

---

- Guarantee only valid for products bought direct from Abcam or one of our authorized distributors