

### Anti-WIF1 antibody [EPR9385] ab155101

**重组** RabMAb

★★★★★ **2 Abreviews** **16 References** **7 图像**

#### 概述

产品名称	Anti-WIF1抗体[EPR9385]
描述	兔单克隆抗体[EPR9385] to WIF1
宿主	Rabbit
经测试应用	<b>适用于:</b> WB, IP <b>不适用于:</b> ICC/IF
种属反应性	<b>与反应:</b> Mouse, Rat, Human
免疫原	Synthetic peptide within Human WIF1. The exact sequence is proprietary. (Peptide available as <b>ab171766</b> )
阳性对照	WB: HT29 and HeLa whole cell lysate ( <b>ab150035</b> ), human fetal heart and fetal lung tissue lysates, mouse and rat heart tissue lysates. IP: Human fetal lung tissue lysate.
常规说明	This product is a recombinant monoclonal antibody, which offers several advantages including: <ul style="list-style-type: none"> <li>- High batch-to-batch consistency and reproducibility</li> <li>- Improved sensitivity and specificity</li> <li>- Long-term security of supply</li> <li>- Animal-free production</li> </ul> For more information <b><a href="#">see here</a></b> . Our RabMAb <sup>®</sup> technology is a patented hybridoma-based technology for making rabbit monoclonal antibodies. For details on our patents, please refer to <b><a href="#">RabMAb<sup>®</sup> patents</a></b> .

#### 性能

形式	Liquid
存放说明	Shipped at 4°C. Store at +4°C short term (1-2 weeks). Upon delivery aliquot. Store at -20°C. Stable for 12 months at -20°C.
存储溶液	Preservative: 0.01% Sodium azide Constituents: 40% Glycerol (glycerin, glycerine), 0.05% BSA, 59% PBS
纯度	Protein A purified
克隆	单克隆
克隆编号	EPR9385

同种型IgG

应用

The Abpromise guarantee      **Abpromise™**承诺保证使用ab155101于以下的经测试应用  
“应用说明”部分 下显示的仅为推荐的起始稀释度;实际最佳的稀释度/浓度应由使用者检定。

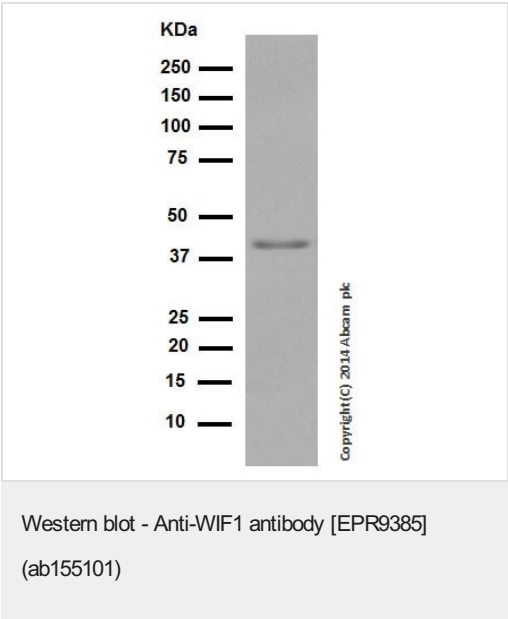
应用	Ab评论	说明
WB	★★★★★ (1)	1/2000. Predicted molecular weight: 41 kDa.Can be blocked with <b>Human WIF1 peptide (ab171766)</b> . <b>For unpurified use at 1/1000 - 1/10000.</b>
IP		1/60. <b>For unpurified use at 1/10 - 1/100.</b>

应用说明      Is unsuitable for ICC/IF.

靶标

功能      Binds to WNT proteins and inhibits their activities. May be involved in mesoderm segmentation.  
序列相似性      Contains 5 EGF-like domains.  
                         Contains 1 WIF domain.  
细胞定位      Secreted.

图片

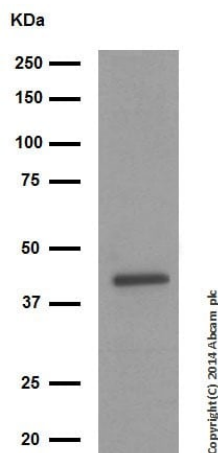


Anti-WIF1 antibody [EPR9385] (ab155101) at 1/2000 dilution  
(purified) + Human fetal heart tissue lysate at 20 µg

**Secondary**  
Goat Anti-Rabbit IgG, (H+L), Peroxidase conjugated at 1/1000 dilution

**Predicted band size:** 41 kDa  
**Observed band size:** 41 kDa

Blocking and diluting buffer: 5% NFDm/TBST.



Western blot - Anti-WIF1 antibody [EPR9385]  
(ab155101)

Anti-WIF1 antibody [EPR9385] (ab155101) at 1/5000 dilution  
(purified) + Human fetal lung tissue lysate at 10 µg

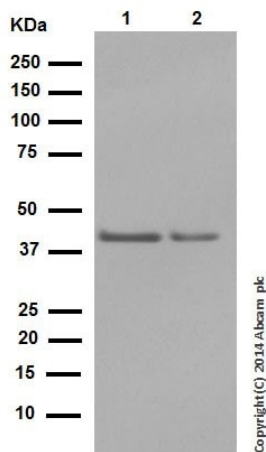
#### Secondary

Goat Anti-Rabbit IgG, (H+L), Peroxidase conjugated at 1/1000  
dilution

**Predicted band size:** 41 kDa

**Observed band size:** 41 kDa

Blocking and diluting buffer: 5% NFDM/TBST.



Western blot - Anti-WIF1 antibody [EPR9385]  
(ab155101)

**All lanes :** Anti-WIF1 antibody [EPR9385] (ab155101) at 1/1000  
dilution (purified)

**Lane 1 :** Mouse heart tissue lysate

**Lane 2 :** Rat heart tissue lysate

Lysates/proteins at 20 µg per lane.

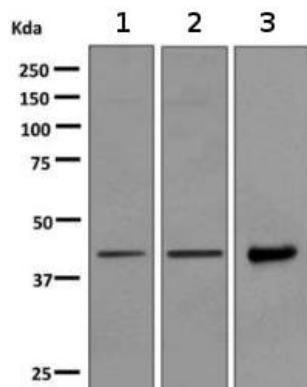
#### Secondary

**All lanes :** Goat Anti-Rabbit IgG, (H+L), Peroxidase conjugated at  
1/1000 dilution

**Predicted band size:** 41 kDa

**Observed band size:** 41 kDa

Blocking and diluting buffer: 5% NFDM/TBST.



Western blot - Anti-WIF1 antibody [EPR9385]  
(ab155101)

**All lanes :** Anti-WIF1 antibody [EPR9385] (ab155101) at 1/1000 dilution (unpurified)

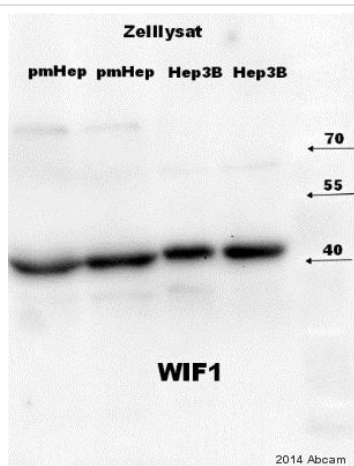
**Lane 1 :** HT29 cell lysate

**Lane 2 :** HeLa cell lysate

**Lane 3 :** Human fetal lung tissue lysate

Lysates/proteins at 10 µg per lane.

**Predicted band size:** 41 kDa



Western blot - Anti-WIF1 antibody [EPR9385]  
(ab155101)

This image is courtesy of an anonymous Abreview

**All lanes :** Anti-WIF1 antibody [EPR9385] (ab155101) at 1/1000 dilution (unpurified)

**Lanes 1-2 :** pmHep3B whole cell lysate

**Lanes 3-4 :** Hep3B whole cell lysate

Lysates/proteins at 30 µg per lane.

**Secondary**

**All lanes :** Alkaline Phosphatase conjugated goat anti-rabbit IgG polyclonal at 1/15000 dilution

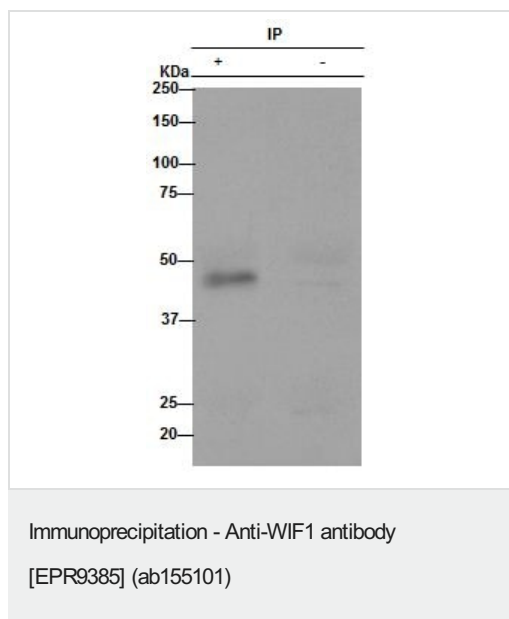
Developed using the ECL technique.

Performed under non-reducing conditions.

**Predicted band size:** 41 kDa

**Observed band size:** 41 kDa

**Exposure time:** 1 minute







Purified ab155101 (1/60) immunoprecipitating WIF1 in human fetal lung whole cell lysate (Lane +). For western blotting an Anti-Rabbit IgG (HRP), specific to the non-reduced form of IgG (1/500) was used as the secondary antibody.

Lane (-): Rabbit monoclonal IgG (**ab172730**) instead of ab155101 in Human fetal lung whole cell lysate.

Blocking and diluting buffer: 5% NFDM/TBST.

Why choose a recombinant antibody?

 <p><b>Research with confidence</b> Consistent and reproducible results</p>	 <p><b>Long-term and scalable supply</b> Recombinant technology</p>
 <p><b>Success from the first experiment</b> Confirmed specificity</p>	 <p><b>Ethical standards compliant</b> Animal-free production</p>

Anti-WIF1 antibody [EPR9385] (ab155101)

**Please note:** All products are "FOR RESEARCH USE ONLY. NOT FOR USE IN DIAGNOSTIC PROCEDURES"

### Our Abpromise to you: Quality guaranteed and expert technical support

- Replacement or refund for products not performing as stated on the datasheet
- Valid for 12 months from date of delivery
- Response to your inquiry within 24 hours
- We provide support in Chinese, English, French, German, Japanese and Spanish
- Extensive multi-media technical resources to help you
- We investigate all quality concerns to ensure our products perform to the highest standards

If the product does not perform as described on this datasheet, we will offer a refund or replacement. For full details of the Abpromise, please visit <https://www.abcam.cn/abpromise> or contact our technical team.

## **Terms and conditions**

---

- Guarantee only valid for products bought direct from Abcam or one of our authorized distributors