

# Anti-West Nile Virus M glycoprotein antibody ab22070

★★★★★ [3 Abreviews](#) [6 References](#) [2 图像](#)

### 概述

产品名称	Anti-West Nile Virus M glycoprotein抗体
描述	兔多克隆抗体to West Nile Virus M glycoprotein
宿主	Rabbit
经测试应用	适用于: IHC-P, WB
种属反应性	与反应: West Nile virus
免疫原	Synthetic peptide corresponding to West Nile Virus M glycoprotein aa 8-27. Sequence: GESTLANKKGAWLDSTKATR

 [Run BLAST with](#)

 [Run BLAST with](#)

### 常规说明

The Life Science industry has been in the grips of a reproducibility crisis for a number of years. Abcam is leading the way in addressing this with our range of recombinant monoclonal antibodies and knockout edited cell lines for gold-standard validation. Please check that this product meets your needs before purchasing.

If you have any questions, special requirements or concerns, please send us an inquiry and/or contact our Support team ahead of purchase. Recommended alternatives for this product can be found below, along with publications, customer reviews and Q&As

### 性能

形式	Liquid
存放说明	Shipped at 4°C. Upon delivery aliquot and store at -20°C. Avoid freeze / thaw cycles.
存储溶液	Preservative: 0.02% Sodium azide Constituent: PBS
纯度	Protein G purified
克隆	多克隆
同种型	IgG

### 应用

The Abpromise guarantee

**Abpromise™**承诺保证使用ab22070于以下的经测试应用

“应用说明”部分 下显示的仅为推荐的起始稀释度;实际最佳的稀释度/浓度应由使用者检定。

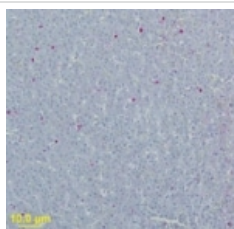
应用	Ab评论	说明
IHC-P	★★★★☆ (2)	Use a concentration of 1 µg/ml.
WB	★★★★☆ (1)	Use a concentration of 0.5 - 2 µg/ml. Detects a band of approximately 8 kDa.

## 靶标

### 相关性

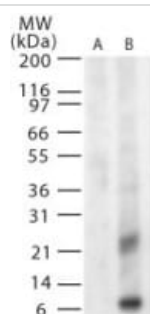
West Nile (WN), the most widespread among flaviviruses, was first isolated from the serum of a febrile woman in 1937 in the West Nile district of Uganda. West Nile virus was first detected in North America in 1999 and has subsequently spread throughout the United States and Canada and into Mexico and the Caribbean. In Africa, southern Europe, western Asia, and the United States, WNV has been isolated from mosquitoes of more than 40 species. In the United States, Canada, and Israel, WNV is responsible for significant avian mortality.

## 图片



Immunohistochemistry (Formalin/PFA-fixed paraffin-embedded sections) - Anti-West Nile Virus M glycoprotein antibody (ab22070)

IHC analysis of WNV-Envelope protein in bird liver using ab22070 at 1ug/ ml incubated for 30 minutes. A secondary conjugated to biotin was applied followed with streptavidin-AKP. The substrate was Fast Red chromagen. Image courtesy of Angela Ellis, University of Georgia College of Veterinary Medicine



Western blot - Anti-West Nile Virus M glycoprotein antibody (ab22070)

Western blot analysis of West Nile Virus glycoprotein M in (A) untransfected and (B) transfected cells using ab22070 at 1 ug/ml.  
Western blot analysis of West Nile Virus glycoprotein M in (A) untransfected and (B) transfected cells using ab22070 at 1 ug/ml.

**Please note:** All products are "FOR RESEARCH USE ONLY. NOT FOR USE IN DIAGNOSTIC PROCEDURES"

## **Our Abpromise to you: Quality guaranteed and expert technical support**

---

- Replacement or refund for products not performing as stated on the datasheet
- Valid for 12 months from date of delivery
- Response to your inquiry within 24 hours
  
- We provide support in Chinese, English, French, German, Japanese and Spanish
- Extensive multi-media technical resources to help you
- We investigate all quality concerns to ensure our products perform to the highest standards

If the product does not perform as described on this datasheet, we will offer a refund or replacement. For full details of the Abpromise, please visit <https://www.abcam.cn/abpromise> or contact our technical team.

## **Terms and conditions**

---

- Guarantee only valid for products bought direct from Abcam or one of our authorized distributors