


Anti-VPS35 antibody ab97545

★★★★★ [2 Abreviews](#) [20 References](#) [1 图像](#)

概述

产品名称	Anti-VPS35抗体
描述	兔多克隆抗体to VPS35
宿主	Rabbit
经测试应用	适用于: WB
种属反应性	与反应: Human 预测可用于: Mouse, Rat, Cow 
免疫原	Synthetic peptide corresponding to a region within amino acids 733-796 (KENDAVTIQV LNQLIQKIRE DLPNLESSEE TEQINKHFHN TLEHLRLRRE SPESEGPIYE GLIL) of Human VPS35 (NP_060676). Run BLAST with ExPASy Run BLAST with NCBI
阳性对照	H1299, HeLa S3, HepG2, MOLT4 and Raji cell lysates
常规说明	<p>The Life Science industry has been in the grips of a reproducibility crisis for a number of years. Abcam is leading the way in addressing this with our range of recombinant monoclonal antibodies and knockout edited cell lines for gold-standard validation. Please check that this product meets your needs before purchasing.</p> <p>If you have any questions, special requirements or concerns, please send us an inquiry and/or contact our Support team ahead of purchase. Recommended alternatives for this product can be found below, along with publications, customer reviews and Q&As</p>

性能

形式	Liquid
存放说明	Shipped at 4°C. Upon delivery aliquot. Store at -20°C or -80°C. Avoid freeze / thaw cycle.
存储溶液	pH: 7.00 Preservative: 0.025% Proclin 300 Constituents: 79% PBS, 20% Glycerol (glycerin, glycerine)
纯度	Immunogen affinity purified
克隆	多克隆
同种型	IgG

应用

The Abpromise guarantee **Abpromise™** 承诺保证使用 ab97545 于以下的经测试应用

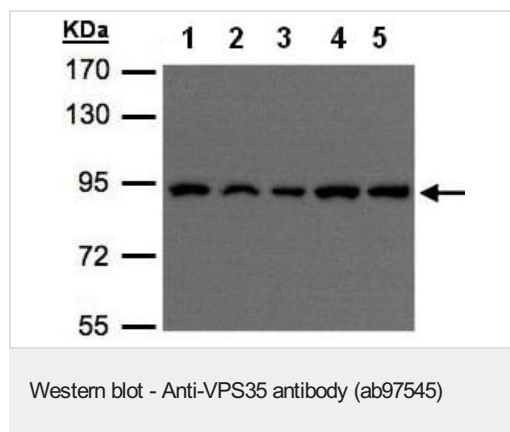
“应用说明”部分 下显示的仅为推荐的起始稀释度;实际最佳的稀释度/浓度应由使用者检定。

应用	Ab评论	说明
WB	★★★★★ (1)	1/500 - 1/3000. Predicted molecular weight: 92 kDa.

靶标

功能	Essential component of the retromer complex, a complex required to retrieve lysosomal enzyme receptors (IGF2R and M6PR) from endosomes to the trans-Golgi network. Also required to regulate transcytosis of the polymeric immunoglobulin receptor (pIgR-pIgA).
组织特异性	Ubiquitous. Highly expressed in heart, brain, placenta, skeletal muscle, spleen, thymus, testis, ovary, small intestine, kidney and colon.
序列相似性	Belongs to the VPS35 family.
细胞定位	Cytoplasm. Membrane.

图片



All lanes : Anti-VPS35 antibody (ab97545) at 1/500 dilution

- Lane 1 :** H1299 whole cell lysate
- Lane 2 :** HeLaS3 whole cell lysate
- Lane 3 :** HepG2 whole cell lysate
- Lane 4 :** MOLT4 whole cell lysate
- Lane 5 :** Raji whole cell lysate

Lysates/proteins at 30 µg per lane.

Predicted band size: 92 kDa

7.5% SDS PAGE

Please note: All products are "FOR RESEARCH USE ONLY. NOT FOR USE IN DIAGNOSTIC PROCEDURES"

Our Abpromise to you: Quality guaranteed and expert technical support

- Replacement or refund for products not performing as stated on the datasheet
- Valid for 12 months from date of delivery

- Response to your inquiry within 24 hours
- We provide support in Chinese, English, French, German, Japanese and Spanish
- Extensive multi-media technical resources to help you
- We investigate all quality concerns to ensure our products perform to the highest standards

If the product does not perform as described on this datasheet, we will offer a refund or replacement. For full details of the Abpromise, please visit <https://www.abcam.cn/abpromise> or contact our technical team.

Terms and conditions

- Guarantee only valid for products bought direct from Abcam or one of our authorized distributors