

Anti-VP16 tag antibody ab4808

★★★★☆ [4 Abreviews](#) [26 References](#) [2 图像](#)

概述

产品名称	Anti-VP16 tag抗体
描述	兔多克隆抗体to VP16 tag
宿主	Rabbit
特异性	This antibody was raised against an immunogen that is predicted to react with HSV-1. We do not expect this product to react with HSV-2. Abcam welcomes customer feedback and would appreciate any comments regarding this product.
经测试应用	适用于: WB, IHC-P, IHC-Fr
种属反应性	与反应: Species independent
免疫原	Synthetic peptide corresponding to Herpes simplex virus VP16 tag aa 450 to the C-terminus conjugated to keyhole limpet haemocyanin. (Peptide available as ab13406)
阳性对照	This antibody recognises GAL4-VP16 recombinant fusion protein (30kDa) in Western blot.
常规说明	<p>The Life Science industry has been in the grips of a reproducibility crisis for a number of years. Abcam is leading the way in addressing this with our range of recombinant monoclonal antibodies and knockout edited cell lines for gold-standard validation. Please check that this product meets your needs before purchasing.</p> <p>If you have any questions, special requirements or concerns, please send us an inquiry and/or contact our Support team ahead of purchase. Recommended alternatives for this product can be found below, along with publications, customer reviews and Q&As</p>

性能

形式	Liquid
存放说明	Shipped at 4°C. Store at +4°C short term (1-2 weeks). Upon delivery aliquot. Store at -20°C or -80°C. Avoid freeze / thaw cycle.
存储溶液	pH: 7.40 Preservative: 0.02% Sodium azide Constituent: PBS
	Batches of this product that have a concentration < 1mg/ml may have BSA added as a stabilising agent. If you would like information about the formulation of a specific lot, please contact our scientific support team who will be happy to help.

纯度	Immunogen affinity purified
克隆	多克隆
同种型	IgG

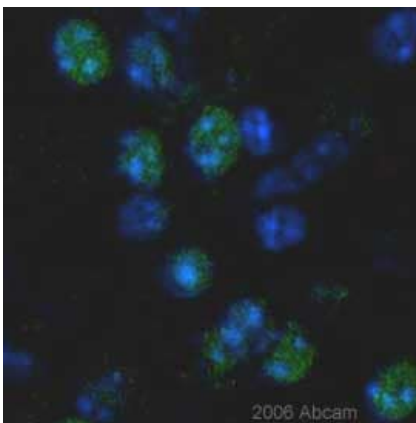
应用

The Abpromise guarantee **Abpromise™**承诺保证使用ab4808于以下的经测试应用

“应用说明”部分 下显示的仅为推荐的起始稀释度;实际最佳的稀释度/浓度应由使用者检定。

应用	Ab评论	说明
WB	★★★★★ (1)	1/500 - 1/2000. Detects a band of approximately 30 kDa.
IHC-P	★★★★★ (1)	Use at an assay dependent concentration.
IHC-Fr	★★★★★ (1)	Use at an assay dependent concentration.

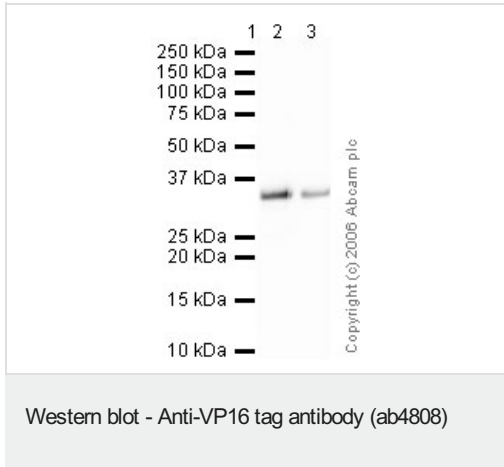
图片



ab4808 at a 1/100 dilution staining mouse brain sections by Immunohistochemistry (Formalin-fixed paraffin-embedded sections). Following heat mediated antigen retrieval, the antibody was incubated with the tissue for 24 hours. Bound antibody was detected using an Alexa-Fluor 488® conjugated Donkey anti-Rabbit IgG.

Immunohistochemistry (Formalin/PFA-fixed paraffin-embedded sections) - Anti-VP16 tag antibody (ab4808)

This image is courtesy of an Abreview submitted on 10 March 2006.



Lane 1 : Marker

Lanes 2-3 : Anti-VP16 tag antibody (ab4808) at 1 µg/ml

Lane 2 : GAL4-VP16 human recombinant E.coli

Lane 3 : GAL4-VP16 human recombinant E.coli with VP16 tag peptide (**ab13406**) at 1 µg/ml

Secondary

Lanes 2-3 : Goat polyclonal to Rabbit IgG H&L (HRP) Pre-Adsorbed at 1/10000 dilution

Performed under reducing conditions.

Please note: All products are "FOR RESEARCH USE ONLY. NOT FOR USE IN DIAGNOSTIC PROCEDURES"

Our Abpromise to you: Quality guaranteed and expert technical support

- Replacement or refund for products not performing as stated on the datasheet
- Valid for 12 months from date of delivery
- Response to your inquiry within 24 hours
- We provide support in Chinese, English, French, German, Japanese and Spanish
- Extensive multi-media technical resources to help you
- We investigate all quality concerns to ensure our products perform to the highest standards

If the product does not perform as described on this datasheet, we will offer a refund or replacement. For full details of the Abpromise, please visit <https://www.abcam.cn/abpromise> or contact our technical team.

Terms and conditions

- Guarantee only valid for products bought direct from Abcam or one of our authorized distributors