


Anti-Vimentin antibody ab137321

★★★★★ [1 Abreviews](#) [224 References](#) [14 图像](#)

概述

产品名称	Anti-Vimentin抗体
描述	兔多克隆抗体to Vimentin
宿主	Rabbit
经测试应用	适用于: WB, ICC/IF, IHC-P, IP
种属反应性	与反应: Mouse, Rat, Human 预测可用于: Chicken, Guinea pig, Cow, Dog, Chimpanzee 
免疫原	Recombinant fragment within Human Vimentin (internal sequence). The exact sequence is proprietary. Database link: P08670
阳性对照	WB: HEK-293T, HeLa and NIH/3T3 whole cell lysates. U87-MG, SK-N-SH. IMR32 and SK-N-AS whole cell extracts. ICC/IF: HeLa cells. IHC-P: Adult mouse retina tissue. U373 xenograft tissue and RT2 rat xenograft tissue. IP: HeLa whole cell extract.
常规说明	<p>The Life Science industry has been in the grips of a reproducibility crisis for a number of years. Abcam is leading the way in addressing this with our range of recombinant monoclonal antibodies and knockout edited cell lines for gold-standard validation. Please check that this product meets your needs before purchasing.</p> <p>If you have any questions, special requirements or concerns, please send us an inquiry and/or contact our Support team ahead of purchase. Recommended alternatives for this product can be found below, along with publications, customer reviews and Q&As</p>

性能

形式	Liquid
存放说明	Shipped at 4°C. Store at +4°C short term (1-2 weeks). Upon delivery aliquot. Store at -20°C. Avoid freeze / thaw cycle.
存储溶液	pH: 7.00 Preservative: 0.025% Proclin 300 Constituents: 79% PBS, 20% Glycerol (glycerin, glycerine)
纯度	Affinity purified
克隆	多克隆
同种型	IgG

应用

The Abpromise guarantee **Abpromise™**承诺保证使用ab137321于以下的经测试应用

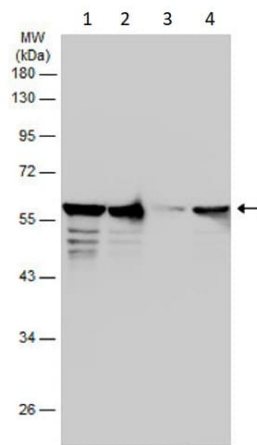
“应用说明”部分 下显示的仅为推荐的起始稀释度;实际最佳的稀释度/浓度应由使用者检定。

应用	Ab评论	说明
WB		1/500 - 1/3000. Predicted molecular weight: 54 kDa.
ICC/IF		1/100 - 1/1000.
IHC-P	★★★★★ (1)	1/100 - 1/1000.
IP		Use at an assay dependent concentration.

靶标

功能	<p>Vimentins are class-III intermediate filaments found in various non-epithelial cells, especially mesenchymal cells. Vimentin is attached to the nucleus, endoplasmic reticulum, and mitochondria, either laterally or terminally.</p> <p>Involved with LARP6 in the stabilization of type I collagen mRNAs for CO1A1 and CO1A2.</p>
组织特异性	<p>Highly expressed in fibroblasts, some expression in T- and B-lymphocytes, and little or no expression in Burkitt's lymphoma cell lines. Expressed in many hormone-independent mammary carcinoma cell lines.</p>
疾病相关	<p>Cataract 30</p>
序列相似性	<p>Belongs to the intermediate filament family.</p>
结构域	<p>The central alpha-helical coiled-coil rod region mediates elementary homodimerization. The [IL]-x-C-x-x-[DE] motif is a proposed target motif for cysteine S-nitrosylation mediated by the iNOS-S100A8/A9 transnitrosylase complex.</p>
翻译后修饰	<p>Filament disassembly during mitosis is promoted by phosphorylation at Ser-55 as well as by nestin (By similarity). One of the most prominent phosphoproteins in various cells of mesenchymal origin. Phosphorylation is enhanced during cell division, at which time vimentin filaments are significantly reorganized. Phosphorylation by PKN1 inhibits the formation of filaments. Phosphorylated at Ser-56 by CDK5 during neutrophil secretion in the cytoplasm. Phosphorylated by STK33.</p> <p>O-glycosylated during cytokinesis at sites identical or close to phosphorylation sites, this interferes with the phosphorylation status.</p> <p>S-nitrosylation is induced by interferon-gamma and oxidatively-modified low-density lipoprotein (LDL(ox)) possibly implicating the iNOS-S100A8/9 transnitrosylase complex.</p>
细胞定位	<p>Cytoplasm.</p>
形式	<p>Vimentin is found in connective tissue and in the cytoskeleton.</p>

图片



Western blot - Anti-Vimentin antibody (ab137321)

All lanes : Anti-Vimentin antibody (ab137321) at 1/50000 dilution

Lane 1 : U87-MG (Human glioblastoma-astrocytoma epithelial cell line) whole cell extracts

Lane 2 : SK-N-SH (Human neuroblastoma cell line) whole cell extracts

Lane 3 : IMR32 whole cell extracts

Lane 4 : SK-N-AS whole cell extracts

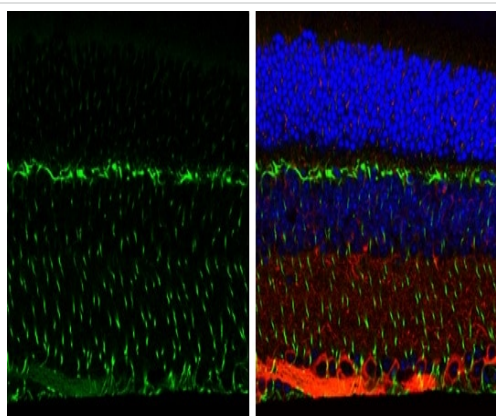
Lysates/proteins at 30 µg per lane.

Secondary

All lanes : HRP-conjugated anti-rabbit IgG

Predicted band size: 54 kDa

10% SDS-PAGE gel

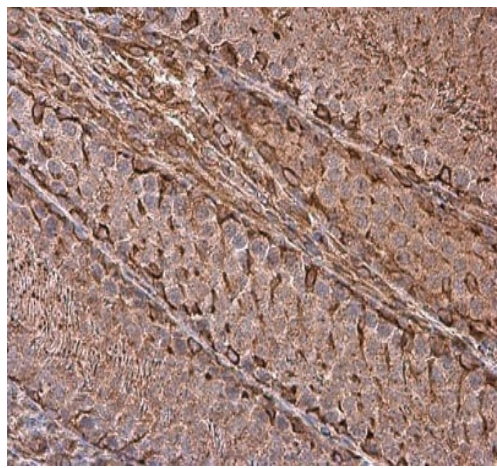


Immunohistochemistry (Formalin/PFA-fixed paraffin-embedded sections) - Anti-Vimentin antibody (ab137321)

Paraffin-embedded adult mouse retina tissue stained for Vimentin with ab137321 (1/250 dilution) (green) in immunohistochemical analysis.

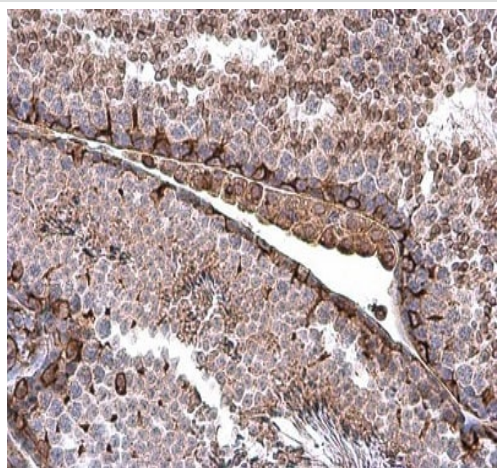
Red: beta Tubulin 3/ TUJ1, stained by beta Tubulin 3/ TUJ1 antibody [GT11710] diluted at 1:500.

Blue: Fluoroshield with DAPI.



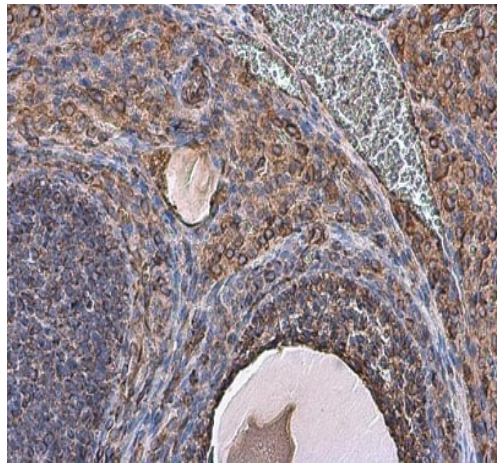
Paraffin-embedded rat testis tissue stained for Vimentin with ab137321 at a 1/500 dilution in immunohistochemical analysis.

Immunohistochemistry (Formalin/PFA-fixed paraffin-embedded sections) - Anti-Vimentin antibody (ab137321)



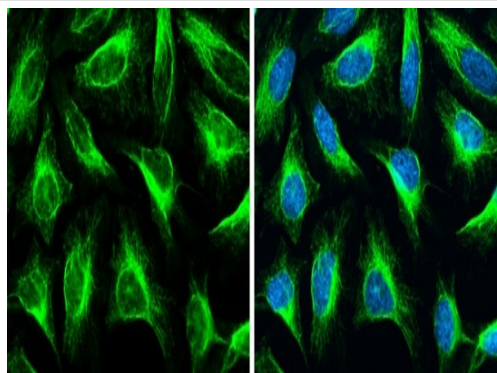
Paraffin-embedded mouse testis tissue stained for Vimentin with ab137321 at a 1/500 dilution in immunohistochemical analysis.

Immunohistochemistry (Formalin/PFA-fixed paraffin-embedded sections) - Anti-Vimentin antibody (ab137321)



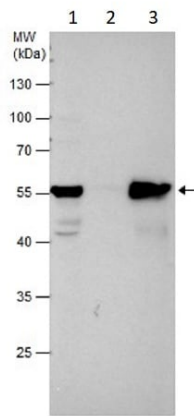
Paraffin-embedded mouse ovary tissue stained for Vimentin with ab137321 at a 1/500 dilution in immunohistochemical analysis.

Immunohistochemistry (Formalin/PFA-fixed paraffin-embedded sections) - Anti-Vimentin antibody (ab137321)



HeLa (human epithelial cell line from cervix adenocarcinoma) cells stained for Vimentin (green) using ab137321 (1/500 dilution) in ICC/IF. Cells were fixed in 4% paraformaldehyde at RT for 15 minutes. Counterstain: Hoechst 33342 (blue).

Immunocytochemistry/ Immunofluorescence - Anti-Vimentin antibody (ab137321)



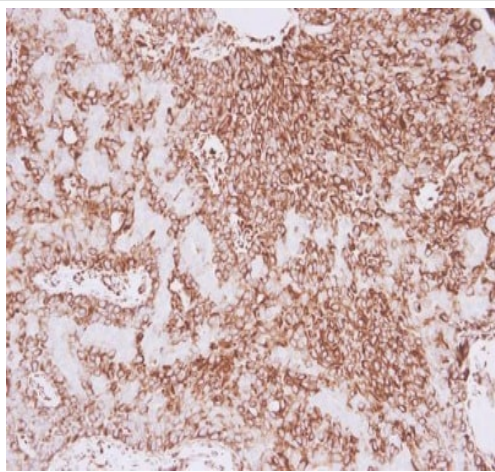
Immunoprecipitation - Anti-Vimentin antibody
(ab137321)

Vimentin was immunoprecipitated from HeLa (Human epithelial cell line from cervix adenocarcinoma) whole cell extracts using 5 μ g of ab137321.

Lane 1: HeLa whole cell extracts (Input).

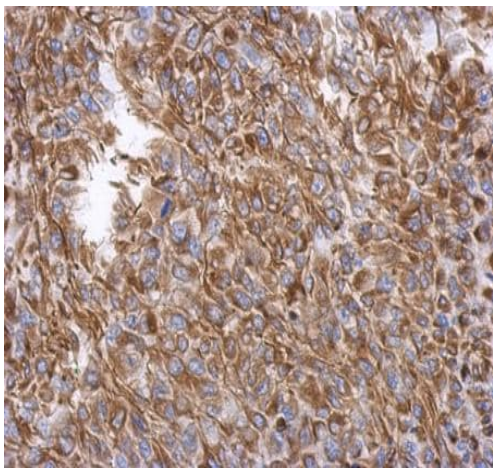
Lane 2: Control IgG in HeLa whole cell extracts.

Lane 3: Vimentin IP in HeLa whole cell extracts.



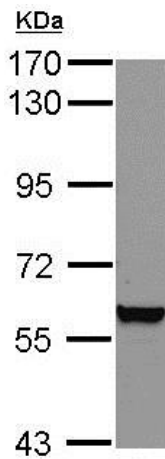
Immunohistochemistry (Formalin/PFA-fixed paraffin-embedded sections) - Anti-Vimentin antibody
(ab137321)

Paraffin-embedded human lung carcinoma tissue stained for Vimentin with ab137321 at a 1/500 dilution in immunohistochemical analysis.



Immunohistochemistry (Formalin/PFA-fixed paraffin-embedded sections) - Anti-Vimentin antibody (ab137321)

Immunohistochemical analysis of paraffin-embedded, formalin-fixed RT2 rat xenograft tissue labeling Vimentin, using ab137321 at a 1/500 dilution.

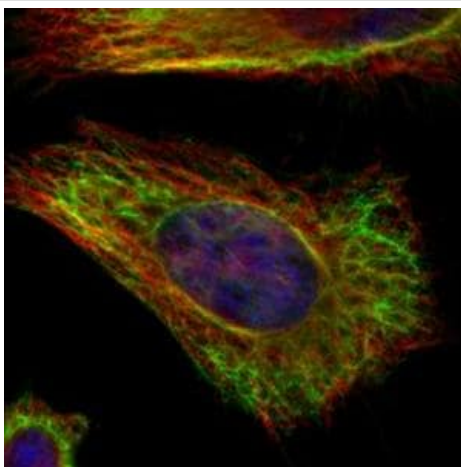


Western blot - Anti-Vimentin antibody (ab137321)

Anti-Vimentin antibody (ab137321) at 1/3000 dilution + HEK-293T (Human epithelial cell line from embryonic kidney transformed with large T antigen) whole cell lysate at 30 μ g

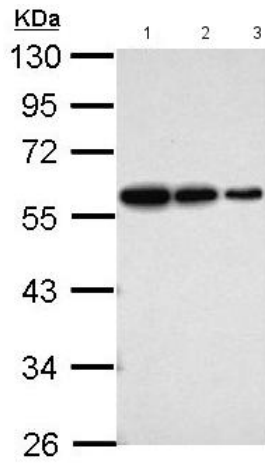
Predicted band size: 54 kDa

7.5% SDS PAGE



Immunocytochemistry/ Immunofluorescence - Anti-Vimentin antibody (ab137321)

Confocal immunofluorescence analysis of methanol-fixed HeLa (Human epithelial cell line from cervix adenocarcinoma) cells labeling Vimentin, using ab137321 (green) at a 1/500 dilution. Alpha-tubulin filaments were labelled with an anti-alpha tubulin antibody (red) at a 1/2000 dilution.



Western blot - Anti-Vimentin antibody (ab137321)

All lanes : Anti-Vimentin antibody (ab137321) at 1/3000 dilution

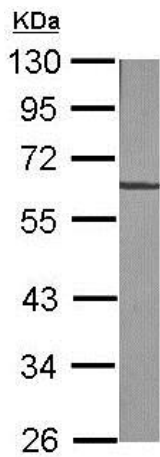
Lane 1 : HEK-293T (Human epithelial cell line from embryonic kidney transformed with large T antigen) whole cell lysate at 20 μ g

Lane 2 : HEK-293T (Human epithelial cell line from embryonic kidney transformed with large T antigen) whole cell lysate at 10 μ g

Lane 3 : HEK-293T (Human epithelial cell line from embryonic kidney transformed with large T antigen) whole cell lysate at 5 μ g

Predicted band size: 54 kDa

10% SDS PAGE

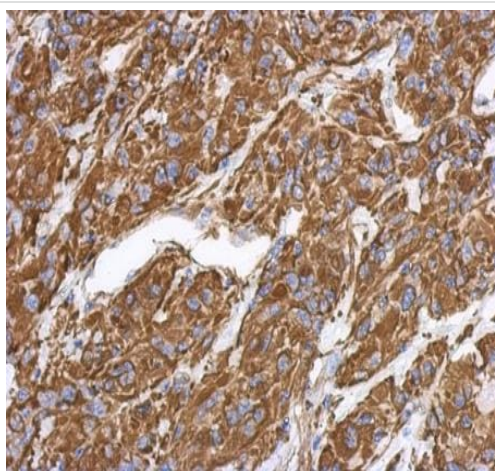


Western blot - Anti-Vimentin antibody (ab137321)

Anti-Vimentin antibody (ab137321) at 1/1000 dilution + NIH-3T3 (Mouse embryo fibroblast cell line) whole cell lysate at 30 μ g

Predicted band size: 54 kDa

10% SDS Page



Immunohistochemistry (Formalin/PFA-fixed paraffin-embedded sections) - Anti-Vimentin antibody (ab137321)

Immunohistochemical analysis of paraffin-embedded, formalin-fixed U373 xenograft tissue labeling Vimentin, using ab137321 at a 1/500 dilution.

Please note: All products are "FOR RESEARCH USE ONLY. NOT FOR USE IN DIAGNOSTIC PROCEDURES"

Our Abpromise to you: Quality guaranteed and expert technical support

- Replacement or refund for products not performing as stated on the datasheet
- Valid for 12 months from date of delivery
- Response to your inquiry within 24 hours

- We provide support in Chinese, English, French, German, Japanese and Spanish
- Extensive multi-media technical resources to help you
- We investigate all quality concerns to ensure our products perform to the highest standards

If the product does not perform as described on this datasheet, we will offer a refund or replacement. For full details of the Abpromise, please visit <https://www.abcam.cn/abpromise> or contact our technical team.

Terms and conditions

- Guarantee only valid for products bought direct from Abcam or one of our authorized distributors