

Anti-VEGF Receptor 2 antibody [EPRER16Y] ab134191

重组 RabMAb

21 References [3 图像](#)

概述

| | |
|-------|--|
| 产品名称 | Anti-VEGF Receptor 2抗体[EPRER16Y] |
| 描述 | 兔单克隆抗体[EPRER16Y] to VEGF Receptor 2 |
| 宿主 | Rabbit |
| 特异性 | It is predicted that this antibody does not cross react with other members of the VEGF receptor family. |
| 经测试应用 | 适用于: ELISA, WB, IP 不适用于: Flow Cyt, ICC/IF or IHC-P |
| 种属反应性 | 与反应: Human |
| 免疫原 | Recombinant fragment within Human VEGF Receptor 2 aa 1-800. The exact sequence is proprietary. |
| 阳性对照 | WB: Human placenta lysate. |
| 常规说明 | This product is a recombinant monoclonal antibody, which offers several advantages including: <ul style="list-style-type: none">- High batch-to-batch consistency and reproducibility- Improved sensitivity and specificity- Long-term security of supply- Animal-free production For more information see here . Our RabMAb [®] technology is a patented hybridoma-based technology for making rabbit monoclonal antibodies. For details on our patents, please refer to RabMAb[®] patents . Mouse, Rat: We have preliminary internal testing data to indicate this antibody may not react with these species. Please contact us for more information. |

性能

| | |
|------|--|
| 形式 | Liquid |
| 存放说明 | Shipped at 4°C. Store at +4°C short term (1-2 weeks). Upon delivery aliquot. Store at -20°C. Stable for 12 months at -20°C. |
| 存储溶液 | pH: 7.2 Preservative: 0.01% Sodium azide Constituents: 9% PBS, 40% Glycerol (glycerin, glycerine), 0.05% BSA, 50% Tissue culture |

| | |
|------|--------------------|
| | supernatant |
| 纯度 | Protein A purified |
| 克隆 | 单克隆 |
| 克隆编号 | EPRER16Y |
| 同种型 | IgG |

应用

The Abpromise guarantee **Abpromise™**承诺保证使用ab134191于以下的经测试应用

“应用说明”部分 下显示的仅为推荐的起始稀释度;实际最佳的稀释度/浓度应由使用者检定。

| 应用 | Ab评论 | 说明 |
|-------|------|---|
| ELISA | | Use at an assay dependent concentration. |
| WB | | 1/1000 - 1/10000. Detects a band of approximately 210, 230 kDa (predicted molecular weight: 151 kDa). |
| IP | | 1/20. |

应用说明 Is unsuitable for Flow Cyt, ICC/IF or IHC-P.

靶标

| | |
|--------------|--|
| 功能 | Receptor for VEGF or VEGFC. Has a tyrosine-protein kinase activity. The VEGF-kinase ligand/receptor signaling system plays a key role in vascular development and regulation of vascular permeability. In case of HIV-1 infection, the interaction with extracellular viral Tat protein seems to enhance angiogenesis in Kaposi's sarcoma lesions. |
| 疾病相关 | Defects in KDR are associated with susceptibility to hemangioma capillary infantile (HCI) [MIM:602089]. HCI are benign, highly proliferative lesions involving aberrant localized growth of capillary endothelium. They are the most common tumor of infancy, occurring in up to 10% of all births. Hemangiomas tend to appear shortly after birth and show rapid neonatal growth for up to 12 months characterized by endothelial hypercellularity and increased numbers of mast cells. This phase is followed by slow involution at a rate of about 10% per year and replacement by fibrofatty stroma. |
| 序列相似性 | Belongs to the protein kinase superfamily. Tyr protein kinase family. CSF-1/PDGF receptor subfamily. Contains 7 Ig-like C2-type (immunoglobulin-like) domains. Contains 1 protein kinase domain. |
| 翻译后修饰 | Phosphorylated. Dephosphorylated by PTPRB. Dephosphorylated by PTPRJ at Tyr-951, Tyr-996, Tyr-1054, Tyr-1059, Tyr-1175 and Tyr-1214. |
| 细胞定位 | Membrane. |

图片



Western blot - Anti-VEGF Receptor 2 antibody [EPRER16Y] (ab134191)

Anti-VEGF Receptor 2 antibody [EPRER16Y] (ab134191) at 1/500 dilution + Human placenta lysate at 10 µg

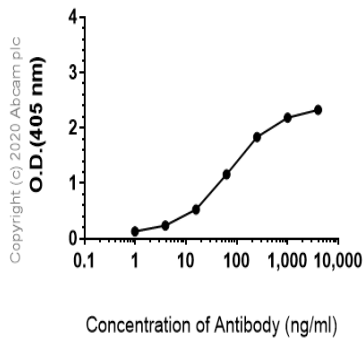
Secondary

HRP labelled goat anti-rabbit at 1/2000 dilution

Predicted band size: 151 kDa

Observed band size: 210,230 kDa



Indirect ELISA antibody dose-response curve antigen at 1000 ng/ml



ELISA - Anti-VEGF Receptor 2 antibody [EPRER16Y] (ab134191)

ELISA analysis of Hu VEGFR2 recombinant protein at 1000 ng/mL with ab134191. An Alkaline Phosphatase-conjugated AffiniPure Goat Anti-Rabbit IgG (H+L) at 1/2500 dilution was used as the secondary antibody.

Why choose a recombinant antibody?

| | |
|--|--|
|  <p>Research with confidence Consistent and reproducible results</p> |  <p>Long-term and scalable supply Recombinant technology</p> |
|  <p>Success from the first experiment Confirmed specificity</p> |  <p>Ethical standards compliant Animal-free production</p> |

Anti-VEGF Receptor 2 antibody [EPRER16Y] (ab134191)

Please note: All products are "FOR RESEARCH USE ONLY. NOT FOR USE IN DIAGNOSTIC PROCEDURES"

Our Abpromise to you: Quality guaranteed and expert technical support

- Replacement or refund for products not performing as stated on the datasheet
- Valid for 12 months from date of delivery
- Response to your inquiry within 24 hours

- We provide support in Chinese, English, French, German, Japanese and Spanish
- Extensive multi-media technical resources to help you
- We investigate all quality concerns to ensure our products perform to the highest standards

If the product does not perform as described on this datasheet, we will offer a refund or replacement. For full details of the Abpromise, please visit <https://www.abcam.cn/abpromise> or contact our technical team.

Terms and conditions

- Guarantee only valid for products bought direct from Abcam or one of our authorized distributors