

Anti-VE Cadherin antibody [BV13] - Intercellular Junction Marker ab91064

[1 Abreviews](#) [8 References](#) [1 图像](#)

概述

产品名称	Anti-VE Cadherin抗体[BV13] - Intercellular Junction Marker
描述	大鼠单克隆抗体[BV13] to VE Cadherin - Intercellular Junction Marker
宿主	Rat
经测试应用	适用于: Flow Cyt
种属反应性	与反应: Mouse
免疫原	Recombinant fragment. This information is proprietary to Abcam and/or its suppliers.
阳性对照	bEnd.3 cells
常规说明	<p>The Life Science industry has been in the grips of a reproducibility crisis for a number of years. Abcam is leading the way in addressing this with our range of recombinant monoclonal antibodies and knockout edited cell lines for gold-standard validation. Please check that this product meets your needs before purchasing.</p> <p>If you have any questions, special requirements or concerns, please send us an inquiry and/or contact our Support team ahead of purchase. Recommended alternatives for this product can be found below, along with publications, customer reviews and Q&As</p>

性能

形式	Liquid
存放说明	Shipped at 4°C. Store at +4°C short term (1-2 weeks). Store at -20°C or -80°C. Avoid freeze / thaw cycle.
存储溶液	pH: 7.20 Preservative: 0.09% Sodium azide Constituent: PBS
纯度	Protein A purified
克隆	单克隆
克隆编号	BV13
同种型	IgG1

应用

The Abpromise guarantee **Abpromise™**承诺保证使用ab91064于以下的经测试应用

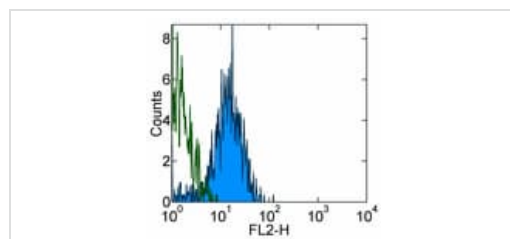
“应用说明”部分 下显示的仅为推荐的起始稀释度;实际最佳的稀释度/浓度应由使用者检定。

应用	Ab评论	说明
Flow Cyt		Use 1 µg for 10 ⁶ cells. Use 1 µg for 10 ⁶ cells in 100 µl total staining volume. ab18407 - Rat monoclonal IgG1, is suitable for use as an isotype control with this antibody.

靶标

功能	Cadherins are calcium dependent cell adhesion proteins. They preferentially interact with themselves in a homophilic manner in connecting cells; cadherins may thus contribute to the sorting of heterogeneous cell types. This cadherin may play a important role in endothelial cell biology through control of the cohesion and organization of the intercellular junctions. It associates with alpha-catenin forming a link to the cytoskeleton.
组织特异性	Endothelial tissues and brain.
序列相似性	Contains 5 cadherin domains.
翻译后修饰	Phosphorylated on tyrosine residues by KDR/VEGFR-2. Dephosphorylated by PTPRB.
细胞定位	Cell junction. Cell membrane. Found at cell-cell boundaries and probably at cell-matrix boundaries.

图片



Flow Cytometry - Anti-VE Cadherin antibody [BV13]
- Intercellular Junction Marker (ab91064)

bEnd.3 cells were labelled with 0.5 µg Rat IgG1 isotype control antibody (open histogram) or 0.5 µg ab91064 (colored histogram) followed by Anti-Rat PE secondary antibody. Total viable cells were used for analysis.

Please note: All products are "FOR RESEARCH USE ONLY. NOT FOR USE IN DIAGNOSTIC PROCEDURES"

Our Abpromise to you: Quality guaranteed and expert technical support

- Replacement or refund for products not performing as stated on the datasheet
- Valid for 12 months from date of delivery
- Response to your inquiry within 24 hours

- We provide support in Chinese, English, French, German, Japanese and Spanish
- Extensive multi-media technical resources to help you
- We investigate all quality concerns to ensure our products perform to the highest standards

If the product does not perform as described on this datasheet, we will offer a refund or replacement. For full details of the Abpromise, please visit <https://www.abcam.cn/abpromise> or contact our technical team.

Terms and conditions

- Guarantee only valid for products bought direct from Abcam or one of our authorized distributors