


Anti-VCAM1 antibody ab115135

★★★★★ [1 Abreviews](#) [3 References](#) [3 图像](#)

概述

产品名称	Anti-VCAM1抗体
描述	兔多克隆抗体to VCAM1
宿主	Rabbit
经测试应用	适用于: WB, ICC/IF
种属反应性	与反应: Mouse, Rat 预测可用于: Horse, Macaque monkey 
免疫原	Synthetic peptide. This information is proprietary to Abcam and/or its suppliers.
阳性对照	WB: Mouse Spleen, Rat Spleen, Mouse Thymus, Rat Thymus, and Mouse Lung tissue lysates; LADMAC and LPS treated bEnd.3 cell lysates; ICC/IF: NIH-3T3 cells.
常规说明	<p>The Life Science industry has been in the grips of a reproducibility crisis for a number of years. Abcam is leading the way in addressing this with our range of recombinant monoclonal antibodies and knockout edited cell lines for gold-standard validation. Please check that this product meets your needs before purchasing.</p> <p>If you have any questions, special requirements or concerns, please send us an inquiry and/or contact our Support team ahead of purchase. Recommended alternatives for this product can be found below, along with publications, customer reviews and Q&As</p>

性能

形式	Liquid
存放说明	Shipped at 4°C. Store at +4°C short term (1-2 weeks). Upon delivery aliquot. Store at -20°C or -80°C. Avoid freeze / thaw cycle.
存储溶液	pH: 7.40 Preservative: 0.02% Sodium azide Constituent: PBS Batches of this product that have a concentration < 1mg/ml may have BSA added as a stabilising agent. If you would like information about the formulation of a specific lot, please contact our scientific support team who will be happy to help.
纯度	Immunogen affinity purified
克隆	多克隆

应用

The Abpromise guarantee

Abpromise™承诺保证使用ab115135于以下的经测试应用

“应用说明”部分 下显示的仅为推荐的起始稀释度;实际最佳的稀释度/浓度应由使用者检定。

应用	Ab评论	说明
WB		Use a concentration of 1 µg/ml. Detects a band of approximately 100 kDa (predicted molecular weight: 81 kDa). Stimulation may be required to allow detection of the target protein due to low levels of endogenous expression in some samples. Please see images below for recommended treatment conditions and positive controls.
ICC/IF		Use a concentration of 5 µg/ml.

靶标

功能

Important in cell-cell recognition. Appears to function in leukocyte-endothelial cell adhesion. Interacts with the beta-1 integrin VLA4 on leukocytes, and mediates both adhesion and signal transduction. The VCAM1/VLA4 interaction may play a pathophysiologic role both in immune responses and in leukocyte emigration to sites of inflammation.

组织特异性

Expressed on inflamed vascular endothelium, as well as on macrophage-like and dendritic cell types in both normal and inflamed tissue.

序列相似性

Contains 7 Ig-like C2-type (immunoglobulin-like) domains.

结构域

Either the first or the fourth Ig-like C2-type domain is required for VLA4-dependent cell adhesion.

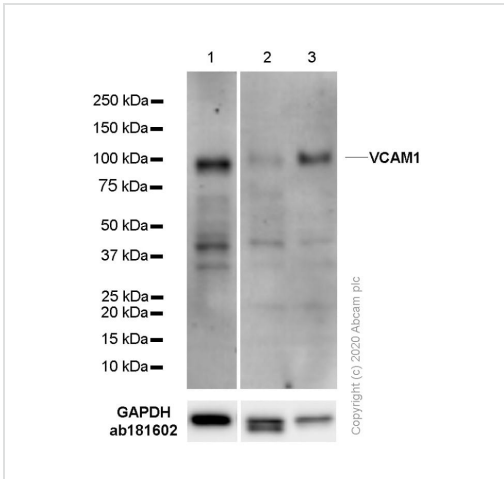
翻译后修饰

Sialoglycoprotein.

细胞定位

Membrane.

图片



Western blot - Anti-VCAM1 antibody (ab115135)

All lanes : Anti-VCAM1 antibody (ab115135) at 1/1000 dilution

Lane 1 : LADMAC (Mouse bone marrow monocyte macrophage) whole cell lysate

Lane 2 : bEnd.3 (Mouse brain endothelioma) whole cell lysate

Lane 3 : bEnd.3 (Mouse brain endothelioma) treated with 10 µg/ml LPS for 24 h, whole cell lysate

Lysates/proteins at 20 µg per lane.

Secondary

All lanes : Goat Anti-Rabbit IgG H&L (HRP) (**ab97051**) at 1/20000 dilution

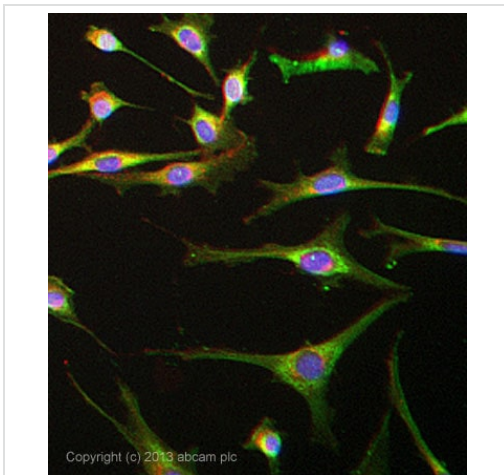
Predicted band size: 81 kDa

Observed band size: 100 kDa

Exposure time: 3 minutes

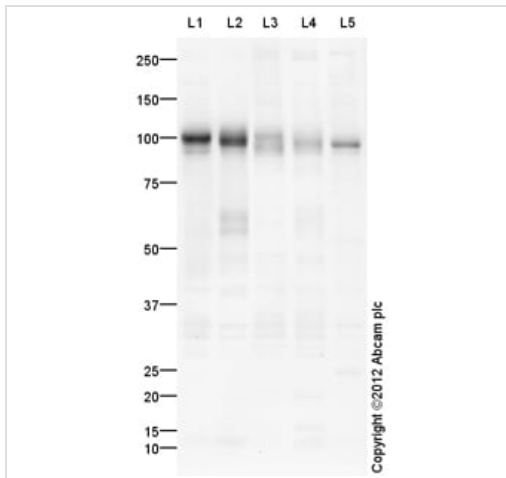
Rabbit monoclonal [EPR16891] to GAPDH (**ab181602**) used as loading control.

Blocking/Diluting buffer: 5% NFD/MTBST.



Immunocytochemistry/ Immunofluorescence - Anti-VCAM1 antibody (ab115135)

ICC/IF image of ab115135 stained NIH-3T3 cells. The cells were 100% methanol fixed (5 min) and then incubated in 1%BSA / 10% normal goat serum / 0.3M glycine in 0.1% PBS-Tween for 1h to permeabilise the cells and block non-specific protein-protein interactions. The cells were then incubated with the antibody ab115135 at 5µg/ml overnight at +4°C. The secondary antibody (green) was DyLight® 488 goat anti- rabbit (**ab96899**) IgG (H+L) used at a 1/250 dilution for 1h. Alexa Fluor® 594 WGA was used to label plasma membranes (red) at a 1/200 dilution for 1h. DAPI was used to stain the cell nuclei (blue) at a concentration of 1.43µM.



Western blot - Anti-VCAM1 antibody (ab115135)

All lanes : Anti-VCAM1 antibody (ab115135) at 1 µg/ml

Lane 1 : Spleen (Mouse) Tissue Lysate

Lane 2 : Spleen (Rat) Tissue Lysate

Lane 3 : Thymus (Mouse) Tissue Lysate

Lane 4 : Thymus (Rat) Tissue Lysate

Lane 5 : Mouse lung normal tissue lysate - total protein ([ab29297](#))

Lysates/proteins at 10 µg per lane.

Secondary

All lanes : Goat Anti-Rabbit IgG H&L (HRP) preadsorbed ([ab97080](#)) at 1/5000 dilution

Developed using the ECL technique.

Performed under reducing conditions.

Predicted band size: 81 kDa

Observed band size: 100 kDa

Additional bands at: 62 kDa. We are unsure as to the identity of these extra bands.

Exposure time: 4 minutes

VCAM1 contains a number of potential glycosylation sites (SwissProt) which may explain its migration at a higher molecular weight than predicted.

Please note: All products are "FOR RESEARCH USE ONLY. NOT FOR USE IN DIAGNOSTIC PROCEDURES"

Our Abpromise to you: Quality guaranteed and expert technical support

- Replacement or refund for products not performing as stated on the datasheet
- Valid for 12 months from date of delivery
- Response to your inquiry within 24 hours
- We provide support in Chinese, English, French, German, Japanese and Spanish

- Extensive multi-media technical resources to help you
- We investigate all quality concerns to ensure our products perform to the highest standards

If the product does not perform as described on this datasheet, we will offer a refund or replacement. For full details of the Abpromise, please visit <https://www.abcam.cn/abpromise> or contact our technical team.

Terms and conditions

- Guarantee only valid for products bought direct from Abcam or one of our authorized distributors