




Anti-VAMP2 antibody ab3347

★★★★★ [3 Abreviews](#) [46 References](#) [1 图像](#)

概述

产品名称	Anti-VAMP2抗体
描述	兔多克隆抗体to VAMP2
宿主	Rabbit
经测试应用	适用于: WB
种属反应性	与反应: Mouse, Rat 预测可用于: Rhesus monkey 
免疫原	Synthetic peptide corresponding to Rat VAMP2 aa 1-18. Sequence: MSATAATVPPAAPAGEGG (Peptide available as ab4958) <div>  Run BLAST with  Run BLAST with </div>
阳性对照	WB: Mouse brain and Rat brain lysates
常规说明	<p>The Life Science industry has been in the grips of a reproducibility crisis for a number of years. Abcam is leading the way in addressing this with our range of recombinant monoclonal antibodies and knockout edited cell lines for gold-standard validation. Please check that this product meets your needs before purchasing.</p> <p>If you have any questions, special requirements or concerns, please send us an inquiry and/or contact our Support team ahead of purchase. Recommended alternatives for this product can be found below, along with publications, customer reviews and Q&As</p>

性能

形式	Liquid
存放说明	Shipped at 4°C. Store at +4°C short term (1-2 weeks). Upon delivery aliquot. Store at -20°C or -80°C. Avoid freeze / thaw cycle.
存储溶液	Constituents: PBS, 0.1% BSA
纯度	Immunogen affinity purified
克隆	多克隆
同种型	IgG

应用

The Abpromise guarantee **Abpromise™**承诺保证使用ab3347于以下的经测试应用

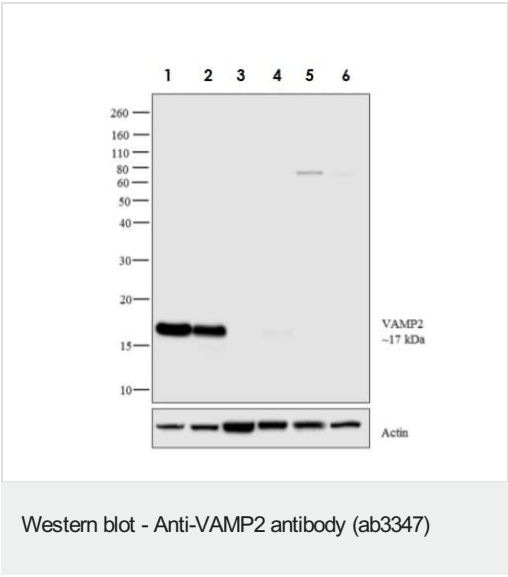
“应用说明”部分 下显示的仅为推荐的起始稀释度;实际最佳的稀释度/浓度应由使用者检定。

应用	Ab评论	说明
WB	★★★★★ (1)	Use at an assay dependent concentration. Detects a band of approximately 19 kDa (predicted molecular weight: 19 kDa).

靶标

功能	Involved in the targeting and/or fusion of transport vesicles to their target membrane.
组织特异性	Nervous system and skeletal muscle.
序列相似性	Belongs to the synaptobrevin family. Contains 1 v-SNARE coiled-coil homology domain.
细胞定位	Cytoplasmic vesicle > secretory vesicle > synaptic vesicle membrane. Cell junction > synapse > synaptosome. Neuronal synaptic vesicles.

图片



All lanes : Anti-VAMP2 antibody (ab3347) at 1 µg/ml

- Lane 1 : Mouse brain lysate
- Lane 2 : Rat brain lysate
- Lane 3 : Mouse lung lysate
- Lane 4 : Rat lung lysate
- Lane 5 : Rat liver lysate
- Lane 6 : Rat kidney lysate

Lysates/proteins at 30 µg per lane.

Secondary

All lanes : Goat anti-Rabbit IgG (H+L) Superclonal™ Secondary Antibody, HRP conjugate at 1/4000 dilution

Predicted band size: 19 kDa

Please note: All products are "FOR RESEARCH USE ONLY. NOT FOR USE IN DIAGNOSTIC PROCEDURES"

Our Abpromise to you: Quality guaranteed and expert technical support

- Replacement or refund for products not performing as stated on the datasheet
- Valid for 12 months from date of delivery
- Response to your inquiry within 24 hours
- We provide support in Chinese, English, French, German, Japanese and Spanish
- Extensive multi-media technical resources to help you
- We investigate all quality concerns to ensure our products perform to the highest standards

If the product does not perform as described on this datasheet, we will offer a refund or replacement. For full details of the Abpromise, please visit <https://www.abcam.cn/abpromise> or contact our technical team.

Terms and conditions

- Guarantee only valid for products bought direct from Abcam or one of our authorized distributors