


Anti-VAMP1 antibody ab41324

★★★★★ [1 Abreviews](#) [2 References](#) [1 图像](#)

概述

产品名称	Anti-VAMP1抗体
描述	兔多克隆抗体to VAMP1
宿主	Rabbit
经测试应用	适用于: WB
种属反应性	与反应: Mouse, Rat 预测可用于: Cow, Human 
免疫原	Synthetic peptide corresponding to Rat VAMP1 aa 1-100 conjugated to keyhole limpet haemocyanin. (Peptide available as ab41454 , ab4957)
常规说明	<p>The Life Science industry has been in the grips of a reproducibility crisis for a number of years. Abcam is leading the way in addressing this with our range of recombinant monoclonal antibodies and knockout edited cell lines for gold-standard validation. Please check that this product meets your needs before purchasing.</p> <p>If you have any questions, special requirements or concerns, please send us an inquiry and/or contact our Support team ahead of purchase. Recommended alternatives for this product can be found below, along with publications, customer reviews and Q&As</p>

性能

形式	Liquid
存放说明	Shipped at 4°C. Store at +4°C short term (1-2 weeks). Upon delivery aliquot. Store at -20°C or -80°C. Avoid freeze / thaw cycle.
存储溶液	pH: 7.40 Preservative: 0.02% Sodium azide Constituent: PBS Batches of this product that have a concentration < 1mg/ml may have BSA added as a stabilising agent. If you would like information about the formulation of a specific lot, please contact our scientific support team who will be happy to help.
纯度	Immunogen affinity purified
克隆	多克隆

同种型IgG

应用

The Abpromise guarantee **Abpromise™**承诺保证使用ab41324于以下的经测试应用

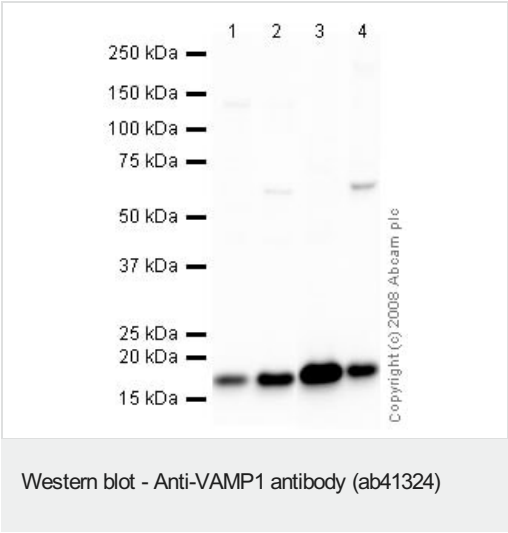
“应用说明”部分 下显示的仅为推荐的起始稀释度;实际最佳的稀释度/浓度应由使用者检定。

应用	Ab评论	说明
WB		Use a concentration of 1 mg/ml. Detects a band of approximately 17 kDa (predicted molecular weight: 13 kDa).

靶标

功能	Involved in the targeting and/or fusion of transport vesicles to their target membrane.
组织特异性	Nervous system, skeletal muscle and adipose tissue.
序列相似性	Belongs to the synaptobrevin family. Contains 1 v-SNARE coiled-coil homology domain.
细胞定位	Mitochondrion outer membrane; Cytoplasmic vesicle > secretory vesicle > synaptic vesicle membrane. Cell junction > synapse > synaptosome and Cytoplasmic vesicle membrane. Cell junction > synapse > synaptosome.

图片



All lanes : Anti-VAMP1 antibody (ab41324) at 1 µg/ml

- Lane 1 :** Brain (Mouse) Tissue Lysate
- Lane 2 :** Brain (Rat) Tissue Lysate - normal tissue
- Lane 3 :** Spinal Cord (Mouse) Tissue Lysate
- Lane 4 :** Spinal Cord (Rat) Tissue Lysate

Lysates/proteins at 10 µg per lane.

Secondary

All lanes : Goat polyclonal to Rabbit IgG - H&L - Pre-Adsorbed (HRP) at 1/3000 dilution

Performed under reducing conditions.

Predicted band size: 13 kDa
Observed band size: 17 kDa

Please note: All products are "FOR RESEARCH USE ONLY. NOT FOR USE IN DIAGNOSTIC PROCEDURES"

Our Abpromise to you: Quality guaranteed and expert technical support

- Replacement or refund for products not performing as stated on the datasheet
- Valid for 12 months from date of delivery
- Response to your inquiry within 24 hours

- We provide support in Chinese, English, French, German, Japanese and Spanish
- Extensive multi-media technical resources to help you
- We investigate all quality concerns to ensure our products perform to the highest standards

If the product does not perform as described on this datasheet, we will offer a refund or replacement. For full details of the Abpromise, please visit <https://www.abcam.cn/abpromise> or contact our technical team.

Terms and conditions

- Guarantee only valid for products bought direct from Abcam or one of our authorized distributors