

Anti-UQCRFS1/RISP antibody [EPR16289] - C-terminal ab191079

 **RabMAb**

1 References **7 图像**

概述

产品名称	Anti-UQCRFS1/RISP抗体[EPR16289] - C-terminal
描述	兔单克隆抗体[EPR16289] to UQCRFS1/RISP - C-terminal
宿主	Rabbit
经测试应用	适用于: Flow Cyt (Intra), IHC-P, ICC/IF, IP, WB
种属反应性	与反应: Mouse, Rat, Human
免疫原	Synthetic peptide. This information is proprietary to Abcam and/or its suppliers.
阳性对照	HeLa, Raji, 293, PC12, mouse brain and Human fetal heart lysates; Human kidney tissue; HepG2 and HeLa cells.
常规说明	<p>This product is a recombinant monoclonal antibody, which offers several advantages including:</p> <ul style="list-style-type: none"> - High batch-to-batch consistency and reproducibility - Improved sensitivity and specificity - Long-term security of supply - Animal-free production <p>For more information see here.</p> <p>Our RabMAb[®] technology is a patented hybridoma-based technology for making rabbit monoclonal antibodies. For details on our patents, please refer to RabMAb[®] patents.</p>

性能

形式	Liquid
存放说明	Shipped at 4°C. Store at +4°C short term (1-2 weeks). Upon delivery aliquot. Store at -20°C long term. Avoid freeze / thaw cycle.
存储溶液	<p>pH: 7.2</p> <p>Preservative: 0.01% Sodium azide</p> <p>Constituents: 40% Glycerol (glycerin, glycerine), 59% PBS, 0.05% BSA</p>
纯度	Protein A purified
克隆	单克隆
克隆编号	EPR16289

同种型

IgG

应用

The Abpromise guarantee

Abpromise™承诺保证使用ab191079于以下的经测试应用

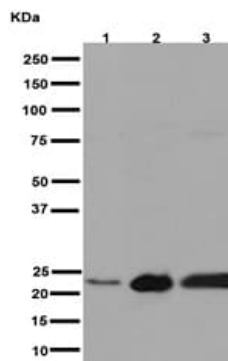
“应用说明”部分 下显示的仅为推荐的起始稀释度;实际最佳的稀释度/浓度应由使用者检定。

应用	Ab评论	说明
Flow Cyt (Intra)		1/280. ab172730 - Rabbit monoclonal IgG, is suitable for use as an isotype control with this antibody.
IHC-P		1/1000. Perform heat mediated antigen retrieval with Tris/EDTA buffer pH 9.0 before commencing with IHC staining protocol.
ICC/IF		1/100.
IP		1/90.
WB		1/1000 - 1/10000. Detects a band of approximately 25 kDa (predicted molecular weight: 30 kDa).

靶标

功能	Component of the ubiquinol-cytochrome c reductase complex (complex III or cytochrome b-c1 complex), which is a respiratory chain that generates an electrochemical potential coupled to ATP synthesis. The transit peptide of the Rieske protein seems to form part of the bc1 complex and is considered to be the subunit 11/IX of that complex.
序列相似性	Contains 1 Rieske domain.
细胞定位	Mitochondrion inner membrane.

图片



Western blot - Anti-UQCRFS1/RISP antibody [EPR16289] - C-terminal (ab191079)

All lanes : Anti-UQCRFS1/RISP antibody [EPR16289] - C-terminal (ab191079) at 1/1000 dilution

Lane 1 : PC12 cell lysate

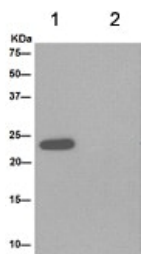
Lanes 2-3 : Mouse brain lysate

Lysates/proteins at 10 µg per lane.

Secondary

All lanes : Goat Anti-Rabbit IgG, (H+L), Peroxidase conjugate at 1/1000 dilution

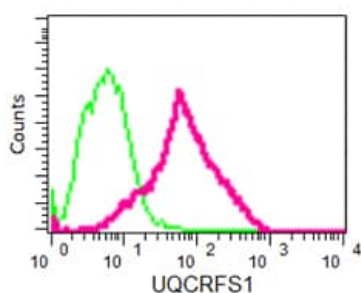
Predicted band size: 30 kDa



Immunoprecipitation - Anti-UQCRFS1/RISP antibody [EPR16289] - C-terminal (ab191079)

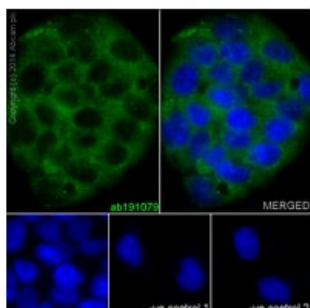
Western blot analysis of immunoprecipitation pellet from Human fetal heart lysate immunoprecipitated using ab191079 at 1/90 dilution (lane 1) or PBS control (lane 2).

Secondary: Anti-Rabbit IgG (HRP), specific to the non-reduced form of IgG at 1/1500 dilution.



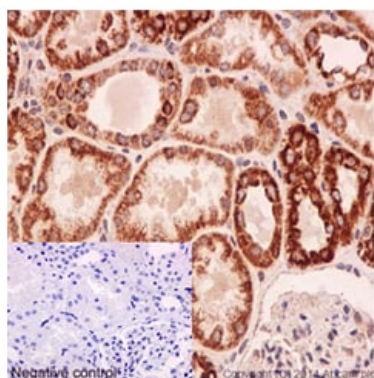
Flow Cytometry (Intracellular) - Anti-UQCRFS1/RISP antibody [EPR16289] - C-terminal (ab191079)

Intracellular flow cytometric analysis of HeLa cells (paraformaldehyde-fixed, 2%) labeling UQCRFS1/RISP with ab191079 at 1/280 dilution (red) or a rabbit IgG (negative) (green), followed by Goat anti rabbit IgG (FITC) secondary at 1/150 dilution.



Immunofluorescent analysis of HepG2 cells (4% Paraformaldehyde-fixed; 0.1% tritonX-100 permeabilized) labeling UQCRFS1/RISP with ab191079 at 1/100 dilution followed by Goat anti rabbit IgG (AlexaFluor® 488) secondary at 1/200 dilution and counter-stained with DAPI (blue). Negative controls also shown.

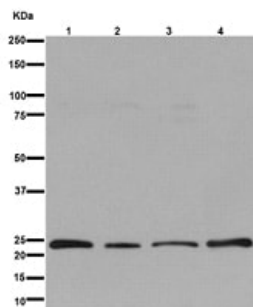
Immunocytochemistry/ Immunofluorescence - Anti-UQCRFS1/RISP antibody [EPR16289] - C-terminal (ab191079)



Immunohistochemical analysis of paraffin-embedded Human kidney tissue labeling UQCRFS1/RISP with ab191079 at 1/100 dilution followed by pre-diluted HRP Polymer for Rabbit IgG secondary antibody and counter-stained with Hematoxylin (inset: negative control).

Perform heat mediated antigen retrieval with Tris/EDTA buffer pH 9.0 before commencing with IHC staining protocol.

Immunohistochemistry (Formalin/PFA-fixed paraffin-embedded sections) - Anti-UQCRFS1/RISP antibody [EPR16289] - C-terminal (ab191079)



Western blot - Anti-UQCRFS1/RISP antibody
[EPR16289] - C-terminal (ab191079)

All lanes : Anti-UQCRFS1/RISP antibody [EPR16289] - C-terminal
(ab191079) at 1/10000 dilution

Lane 1 : HeLa cell lysate

Lane 2 : Raji cell lysate

Lane 3 : 293 cell lysate

Lane 4 : Human fetal heart lysate

Lysates/proteins at 20 µg per lane.

Secondary

All lanes : Goat Anti-Rabbit IgG, (H+L), Peroxidase conjugate at
1/1000 dilution

Predicted band size: 30 kDa

Why choose a recombinant antibody?



Research with confidence
Consistent and reproducible results



Long-term and scalable supply
Recombinant technology



Success from the first experiment
Confirmed specificity



Ethical standards compliant
Animal-free production

Anti-UQCRFS1/RISP antibody [EPR16289] - C-terminal (ab191079)

Please note: All products are "FOR RESEARCH USE ONLY. NOT FOR USE IN DIAGNOSTIC PROCEDURES"

Our Abpromise to you: Quality guaranteed and expert technical support

- Replacement or refund for products not performing as stated on the datasheet
- Valid for 12 months from date of delivery
- Response to your inquiry within 24 hours
- We provide support in Chinese, English, French, German, Japanese and Spanish
- Extensive multi-media technical resources to help you
- We investigate all quality concerns to ensure our products perform to the highest standards

If the product does not perform as described on this datasheet, we will offer a refund or replacement. For full details of the Abpromise,

please visit <https://www.abcam.cn/abpromise> or contact our technical team.

Terms and conditions

- Guarantee only valid for products bought direct from Abcam or one of our authorized distributors