


# Anti-UFD1L antibody ab96648

**2 References**   **3 图像**

### 概述

产品名称	Anti-UFD1L 抗体
描述	兔多克隆抗体 to UFD1L
宿主	Rabbit
经测试应用	适用于: WB, IHC-P, ICC/IF
种属反应性	与反应: Human 预测可用于: Mouse, Rat, Cow, Zebrafish 
免疫原	Recombinant protein fragment corresponding to a region within amino acids 1 and 277 of UFD1L (NP_005650; UniProt ID: Q92890 isoform short).
阳性对照	WB: 293T, A431, H1299, HeLa, HepG2, MOLT4 and Raji cell lysates ICC/IF: A431 cell IHC-P: H441 xenograft
常规说明	<p>The Life Science industry has been in the grips of a reproducibility crisis for a number of years. Abcam is leading the way in addressing this with our range of recombinant monoclonal antibodies and knockout edited cell lines for gold-standard validation. Please check that this product meets your needs before purchasing.</p> <p>If you have any questions, special requirements or concerns, please send us an inquiry and/or contact our Support team ahead of purchase. Recommended alternatives for this product can be found below, along with publications, customer reviews and Q&amp;As</p>

### 性能

形式	Liquid
存放说明	Shipped at 4°C. Upon delivery aliquot and store at -20°C or -80°C. Avoid repeated freeze / thaw cycles.
存储溶液	<p>pH: 7.00</p> <p>Preservative: 0.01% Thimerosal (merthiolate)</p> <p>Constituents: 1.21% Tris, 0.75% Glycine, 10% Glycerol (glycerin, glycerine)</p>
纯度	Immunogen affinity purified
克隆	多克隆
同种型	IgG

应用

The Abpromise guarantee      **Abpromise™**承诺保证使用ab96648于以下的经测试应用

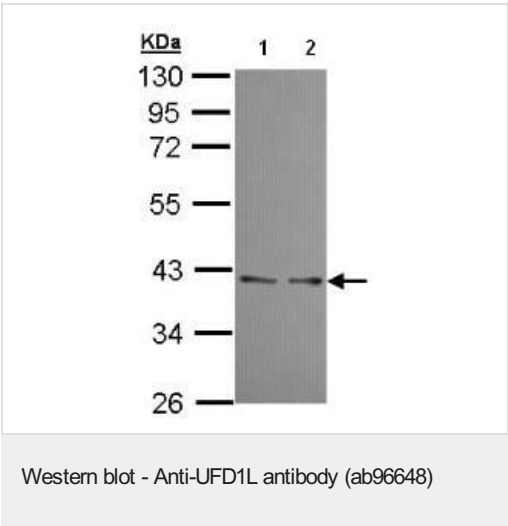
“应用说明”部分 下显示的仅为推荐的起始稀释度;实际最佳的稀释度/浓度应由使用者检定。

应用	Ab评论	说明
WB		1/500 - 1/3000. Predicted molecular weight: 35 kDa.
IHC-P		1/100 - 1/500.
ICC/IF		1/100 - 1/200.

靶标

功能	Essential component of the ubiquitin-dependent proteolytic pathway which degrades ubiquitin fusion proteins. The ternary complex containing UFD1L, VCP and NPLOC4 binds ubiquitinated proteins and is necessary for the export of misfolded proteins from the ER to the cytoplasm, where they are degraded by the proteasome. The NPLOC4-UFD1L-VCP complex regulates spindle disassembly at the end of mitosis and is necessary for the formation of a closed nuclear envelope. It may be involved in the development of some ectoderm-derived structures.
组织特异性	Found in adult heart, skeletal muscle and pancreas, and in fetal liver and kidney.
通路	Protein degradation; proteasomal ubiquitin-dependent pathway.
序列相似性	Belongs to the UFD1 family.
细胞定位	Nucleus. Cytoplasm > cytosol.

图片



**All lanes :** Anti-UFD1L antibody (ab96648) at 1/1000 dilution

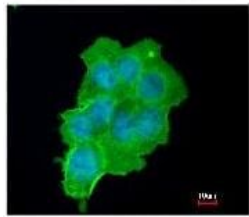
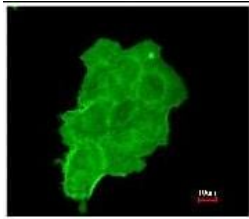
**Lane 1 :** A431 whole cell lysate

**Lane 2 :** H1299 whole cell lysate

Lysates/proteins at 30 µg per lane.

**Predicted band size:** 35 kDa

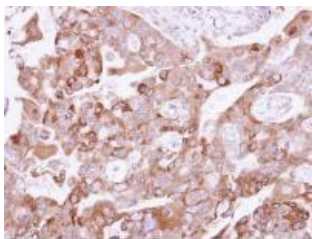
10% SDS PAGE



ab96648, at a 1/200 dilution, staining UFD1L in paraformaldehyde fixed A431 by Immunofluorescence analysis.

Lower image: merged with DNA probe

Immunocytochemistry/ Immunofluorescence - Anti-UFD1L antibody (ab96648)



ab96648, at a 1/500 dilution, staining UFD1L in paraffin embedded H441 xenograft by Immunohistochemical analysis.

Immunohistochemistry (Formalin/PFA-fixed paraffin-embedded sections) - Anti-UFD1L antibody (ab96648)

**Please note:** All products are "FOR RESEARCH USE ONLY. NOT FOR USE IN DIAGNOSTIC PROCEDURES"

### Our Abpromise to you: Quality guaranteed and expert technical support

- Replacement or refund for products not performing as stated on the datasheet
- Valid for 12 months from date of delivery
- Response to your inquiry within 24 hours
- We provide support in Chinese, English, French, German, Japanese and Spanish
- Extensive multi-media technical resources to help you
- We investigate all quality concerns to ensure our products perform to the highest standards

If the product does not perform as described on this datasheet, we will offer a refund or replacement. For full details of the Abpromise, please visit <https://www.abcam.cn/abpromise> or contact our technical team.

## Terms and conditions

---

- Guarantee only valid for products bought direct from Abcam or one of our authorized distributors