

# Anti-Ube1L + E1 Ubiquitin Activating Enzyme 1/UBA1 antibody [EPR4269(2)] ab133479

 RabMAB

★★★★★ **2 Abreviews** **1 References** **5 图像**

### 概述

产品名称	Anti-Ube1L + E1 Ubiquitin Activating Enzyme 1/UBA1抗体[EPR4269(2)]
描述	兔单克隆抗体[EPR4269(2)] to Ube1L + E1 Ubiquitin Activating Enzyme 1/UBA1
宿主	Rabbit
经测试应用	适用于: IHC-P, WB, Flow Cyt (Intra)
种属反应性	与反应: Human 预测可用于: Mouse, Rat 
免疫原	Synthetic peptide within Human Ube1L (N terminal). The exact sequence is proprietary.
阳性对照	WB: HL60, HepG2, HeLa and fetal liver lysate. GST tagged Recombinant human UBA7(Ube1L) protein. GST tagged Recombinant human UBA1 protein. IHC-P: Human urinary bladder carcinoma tissue. Flow Cyt (Intra): HeLa cells.
常规说明	<p>This product is a recombinant monoclonal antibody, which offers several advantages including:</p> <ul style="list-style-type: none"> <li>- High batch-to-batch consistency and reproducibility</li> <li>- Improved sensitivity and specificity</li> <li>- Long-term security of supply</li> <li>- Animal-free production</li> </ul> <p>For more information <a href="#">see here</a>.</p> <p>Our RabMAB<sup>®</sup> technology is a patented hybridoma-based technology for making rabbit monoclonal antibodies. For details on our patents, please refer to <a href="#">RabMAB<sup>®</sup> patents</a>.</p>

### 性能

形式	Liquid
存放说明	Shipped at 4°C. Store at -20°C. Stable for 12 months at -20°C.
存储溶液	pH: 7.2 Preservative: 0.05% Sodium azide Constituents: 0.1% BSA, 40% Glycerol (glycerin, glycerine), 9.85% Tris glycine, 50% Tissue culture supernatant
纯度	Protein A purified

克隆	单克隆
克隆编号	EPR4269(2)
同种型	IgG

应用

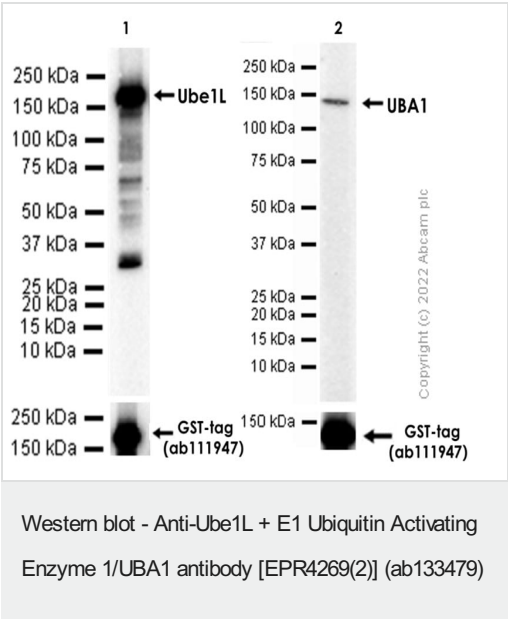
The Abpromise guarantee

Abpromise™承诺保证使用ab133479于以下的经测试应用

“应用说明”部分 下显示的仅为推荐的起始稀释度;实际最佳的稀释度/浓度应由使用者检定。

应用	Ab评论	说明
IHC-P		1/100 - 1/250. Perform heat mediated antigen retrieval with citrate buffer pH 6 before commencing with IHC staining protocol.
WB	★★★★★ (1)	1/10000 - 1/50000. Predicted molecular weight: 111 kDa.
Flow Cyt (Intra)		1/100 - 1/1000. <b>ab172730</b> - Rabbit monoclonal IgG, is suitable for use as an isotype control with this antibody.

图片



**All lanes** : Anti-Ube1L + E1 Ubiquitin Activating Enzyme 1/UBA1 antibody [EPR4269(2)] (ab133479) at 1/1000 dilution

**Lane 1** : GST tagged Recombinant human UBA7(Ube1L) protein (Full length, 166 KDa)

**Lane 2** : GST tagged Recombinant human UBA1 protein (Full length, 146 KDa)

**Secondary**

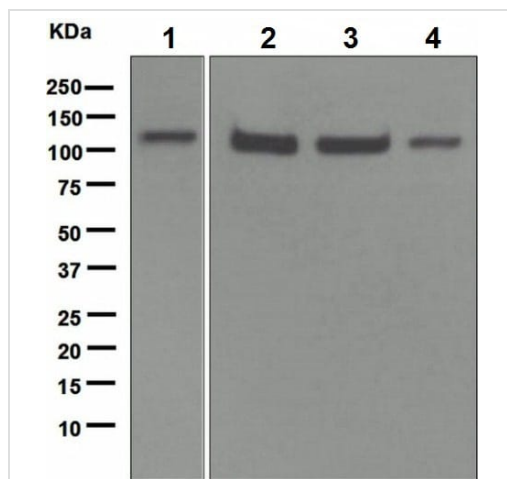
**All lanes** : Goat Anti-Rabbit IgG H&L (HRP) (**ab97051**) at 1/20000 dilution

**Predicted band size:** 111 kDa

**Observed band size:** 146,166 kDa

**Exposure time:** 180 seconds

Blocking/Diluting buffer and concentration: 5% NFDM/TBST



Western blot - Anti-Ube1L + E1 Ubiquitin Activating Enzyme 1/UBA1 antibody [EPR4269(2)] (ab133479)

**All lanes :** Anti-Ube1L + E1 Ubiquitin Activating Enzyme 1/UBA1 antibody [EPR4269(2)] (ab133479) at 1/10000 dilution

**Lane 1 :** HL60 cell lysate

**Lane 2 :** HepG2 cell lysate

**Lane 3 :** HeLa cell lysate

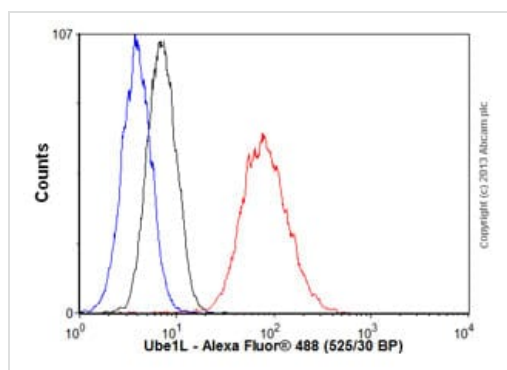
**Lane 4 :** Fetal liver tissue lysate

Lysates/proteins at 10 µg per lane.

## Secondary

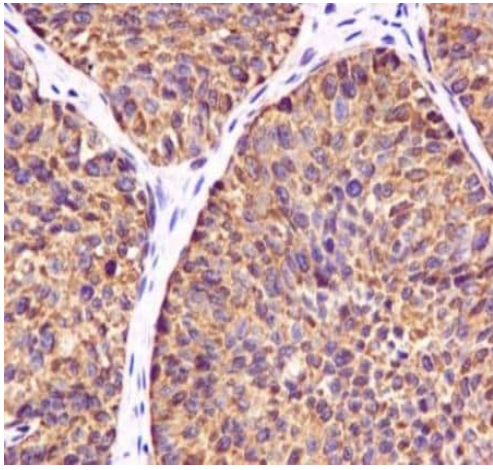
**All lanes :** HRP labelled goat anti-rabbit at 1/2000 dilution

**Predicted band size:** 111 kDa



Flow Cytometry (Intracellular) - Anti-Ube1L + E1 Ubiquitin Activating Enzyme 1/UBA1 antibody [EPR4269(2)] (ab133479)

Overlay histogram showing HeLa cells stained with ab133479 (red line). The cells were fixed with 80% methanol (5 min) and then permeabilized with 0.1% PBS-Tween for 20 min. The cells were then incubated in 1x PBS / 10% normal goat serum / 0.3M glycine to block non-specific protein-protein interactions followed by the antibody (ab133479, 1/1000 dilution) for 30 min at 22°C. The secondary antibody used was Alexa Fluor® 488 goat anti-rabbit IgG (H&L) ([ab150077](#)) at 1/2000 dilution for 30 min at 22°C. Isotype control antibody (black line) was rabbit IgG (monoclonal) (0.1µg/1x10<sup>6</sup> cells) used under the same conditions. Unlabelled sample (blue line) was also used as a control. Acquisition of >5,000 events were collected using a 20mW Argon ion laser (488nm) and 525/30 bandpass filter.



Immunohistochemical analysis of paraffin-embedded human urinary bladder carcinoma tissue labelled with ab133479 at 1/100 dilution.

Perform heat mediated antigen retrieval with citrate buffer pH 6 before commencing with IHC staining protocol.

Immunohistochemistry (Formalin/PFA-fixed paraffin-embedded sections) - Anti-Ube1L + E1 Ubiquitin Activating Enzyme 1/UBA1 antibody [EPR4269(2)] (ab133479)

#### Why choose a recombinant antibody?



Anti-Ube1L + E1 Ubiquitin Activating Enzyme 1/UBA1 antibody [EPR4269(2)] (ab133479)

**Please note:** All products are "FOR RESEARCH USE ONLY. NOT FOR USE IN DIAGNOSTIC PROCEDURES"

#### Our Abpromise to you: Quality guaranteed and expert technical support

- Replacement or refund for products not performing as stated on the datasheet
- Valid for 12 months from date of delivery
- Response to your inquiry within 24 hours
- We provide support in Chinese, English, French, German, Japanese and Spanish
- Extensive multi-media technical resources to help you
- We investigate all quality concerns to ensure our products perform to the highest standards

If the product does not perform as described on this datasheet, we will offer a refund or replacement. For full details of the Abpromise,

please visit <https://www.abcam.cn/abpromise> or contact our technical team.

## Terms and conditions

---

- Guarantee only valid for products bought direct from Abcam or one of our authorized distributors