

Anti-TUBA1A antibody ab95966

7 图像

概述

产品名称	Anti-TUBA1A抗体
描述	兔多克隆抗体to TUBA1A
宿主	Rabbit
经测试应用	适用于: WB, ICC/IF
种属反应性	与反应: Mouse, Rat, Human, Drosophila melanogaster
免疫原	Recombinant fragment, corresponding to a region within amino acids 37-286 of Human TUBA1A (NP_006000).
阳性对照	WB: Jurkat, Raji, HEK-293T, A431, HeLa, HepG2, H1299, HCT116, MCF-7, NT2D1, PC-3, U87-MG, NIH/3T3 whole cell lysate, mouse and rat brain tissue lysat, drosophila lysate. IHC: SAS xenograft tissue. IF: HeLa whole cells.
常规说明	<p>The Life Science industry has been in the grips of a reproducibility crisis for a number of years. Abcam is leading the way in addressing this with our range of recombinant monoclonal antibodies and knockout edited cell lines for gold-standard validation. Please check that this product meets your needs before purchasing.</p> <p>If you have any questions, special requirements or concerns, please send us an inquiry and/or contact our Support team ahead of purchase. Recommended alternatives for this product can be found below, along with publications, customer reviews and Q&As</p>

性能

形式	Liquid
存放说明	Shipped at 4°C. Store at +4°C short term (1-2 weeks). Upon delivery aliquot. Store at -20°C. Avoid freeze / thaw cycle.
存储溶液	<p>pH: 7.00</p> <p>Preservative: 0.025% Proclin 300</p> <p>Constituents: 78% PBS, 1% BSA, 20% Glycerol (glycerin, glycerine)</p>
纯度	Immunogen affinity purified
克隆	多克隆
同种型	IgG

应用

The Abpromise guarantee Abpromise™承诺保证使用ab95966于以下的经测试应用

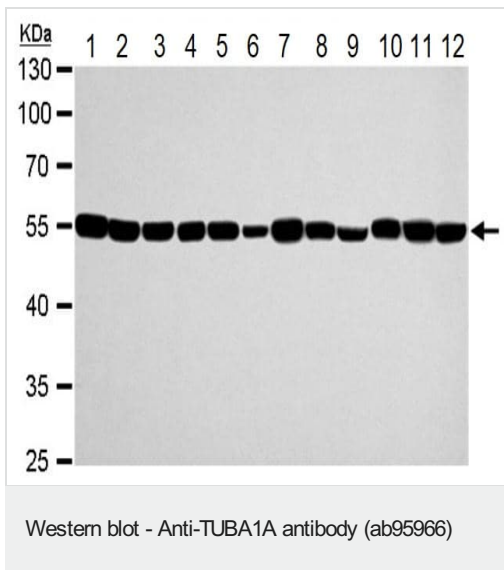
“应用说明”部分 下显示的仅为推荐的起始稀释度;实际最佳的稀释度/浓度应由使用者检定。

应用	Ab评论	说明
WB		1/500 - 1/20000. Predicted molecular weight: 50 kDa.
ICC/IF		1/100 - 1/1000.

靶标

功能	Tubulin is the major constituent of microtubules. It binds two moles of GTP, one at an exchangeable site on the beta chain and one at a non-exchangeable site on the alpha chain.
组织特异性	Expressed at a high level in fetal brain.
疾病相关	Lissencephaly 3
序列相似性	Belongs to the tubulin family.
翻译后修饰	<p>Undergoes a tyrosination/detyrosination cycle, the cyclic removal and re-addition of a C-terminal tyrosine residue by the enzymes tubulin tyrosine carboxypeptidase (TTCP) and tubulin tyrosine ligase (TTL), respectively.</p> <p>Some glutamate residues at the C-terminus are polyglutamylated. This modification occurs exclusively on glutamate residues and results in polyglutamate chains on the gamma-carboxyl group. Also monoglycylated but not polyglycylated due to the absence of functional TTL10 in human. Monoglycylation is mainly limited to tubulin incorporated into axonemes (cilia and flagella) whereas glutamylation is prevalent in neuronal cells, centrioles, axonemes, and the mitotic spindle. Both modifications can coexist on the same protein on adjacent residues, and lowering glycylation levels increases polyglutamylation, and reciprocally. The precise function of such modifications is still unclear but they regulate the assembly and dynamics of axonemal microtubules.</p> <p>Acetylation of alpha chains at Lys-40 stabilizes microtubules and affects affinity and processivity of microtubule motors. This modification has a role in multiple cellular functions, ranging from cell motility, cell cycle progression or cell differentiation to intracellular trafficking and signaling.</p>
细胞定位	Cytoplasm, cytoskeleton.

图片



All lanes : Anti-TUBA1A antibody (ab95966) at 1/10000 dilution

Lane 1 : Jurkat (human T cell leukemia cell line from peripheral blood) whole cell lysate

Lane 2 : Raji (human Burkitt's lymphoma cell line) whole cell lysate

Lane 3 : HEK-293T (human epithelial cell line from embryonic kidney transformed with large T antigen) whole cell lysate

Lane 4 : A431 (human epidermoid carcinoma cell line) whole cell lysate

Lane 5 : HeLa (human epithelial cell line from cervix adenocarcinoma) whole cell lysate

Lane 6 : HepG2 (human liver hepatocellular carcinoma cell line) whole cell lysate

Lane 7 : H1299 (human non-small cell lung carcinoma cell line) whole cell lysate

Lane 8 : HCT 116 (human colorectal carcinoma cell line) whole cell lysate

Lane 9 : MCF7 (human breast adenocarcinoma cell line) whole cell lysate

Lane 10 : NT2/D1 (human embryonal testis carcinoma cell line) whole cell lysate

Lane 11 : PC-3 (human prostate adenocarcinoma cell line) whole cell lysate

Lane 12 : U-87 MG (human glioblastoma-astrocytoma epithelial cell line) whole cell lysate

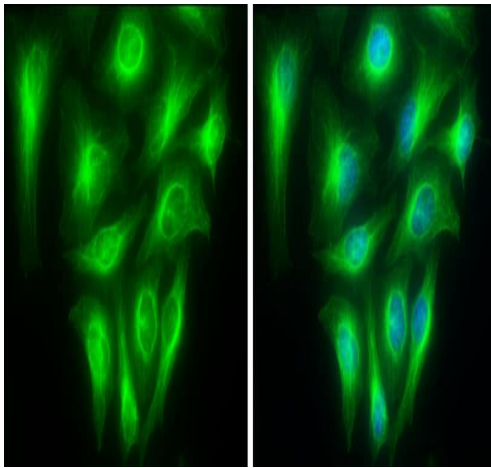
Lysates/proteins at 30 µg per lane.

Secondary

All lanes : HRP-conjugated anti-rabbit IgG antibody

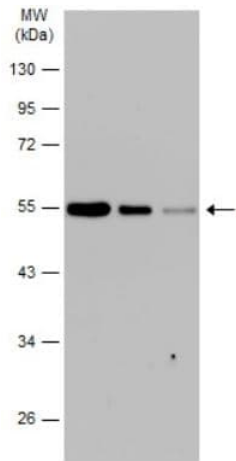
Predicted band size: 50 kDa

10% SDS-PAGE



Immunocytochemistry/ Immunofluorescence - Anti-TUBA1A antibody (ab95966)

Immunofluorescence analysis of 4% paraformaldehyde fixed, at RT for 15 min, HeLa (human epithelial cell line from cervix adenocarcinoma) cells labeling TUBA1A at cytoskeleton with ab95966 at 1/500 dilution. Blue: Hoechst 33342 staining.



Western blot - Anti-TUBA1A antibody (ab95966)

All lanes : Anti-TUBA1A antibody (ab95966) at 1/10000 dilution

Lane 1 : HEK-293T (human epithelial cell line from embryonic kidney transformed with large T antigen) whole cell lysate at 15 μ g

Lane 2 : HEK-293T whole cell lysate at 5 μ g

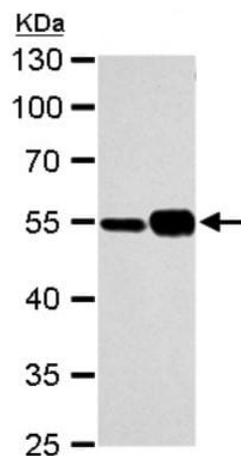
Lane 3 : HEK-293T whole cell lysate at 2 μ g

Secondary

All lanes : HRP-conjugated anti-rabbit IgG antibody

Predicted band size: 50 kDa

10% SDS-PAGE



Western blot - Anti-TUBA1A antibody (ab95966)

All lanes : Anti-TUBA1A antibody (ab95966) at 1/10000 dilution

Lane 1 : NIH/3T3 (mouse embryo fibroblast cell line) whole cell lysate

Lane 2 : Mouse brain tissue lysate

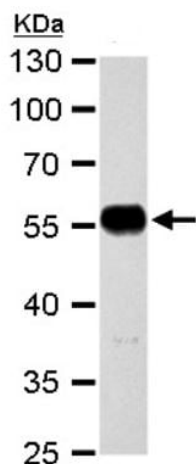
Lysates/proteins at 30 µg per lane.

Secondary

All lanes : HRP-conjugated anti-rabbit IgG antibody

Predicted band size: 50 kDa

10% SDS-PAGE



Western blot - Anti-TUBA1A antibody (ab95966)

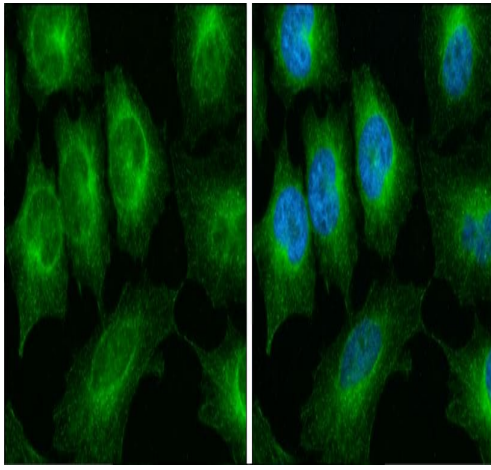
Anti-TUBA1A antibody (ab95966) at 1/10000 dilution + Rat brain tissue lysate at 30 µg

Secondary

HRP-conjugated anti-rabbit IgG antibody

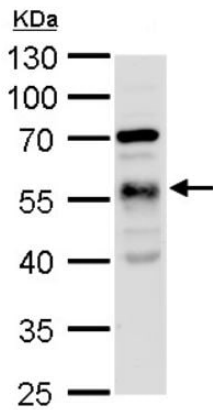
Predicted band size: 50 kDa

10% SDS-PAGE



Immunocytochemistry/ Immunofluorescence - Anti-TUBA1A antibody (ab95966)

Immunofluorescence analysis of 4% paraformaldehyde fixed, at RT for 15 min, HeLa (human epithelial cell line from cervix adenocarcinoma) cells labelling TUBA1A at cytoskeleton with ab95966 at 1/500 dilution. Blue: Hoechst 33342 staining.



Western blot - Anti-TUBA1A antibody (ab95966)

Anti-TUBA1A antibody (ab95966) at 1/10000 dilution + Drosophila lysate at 30 µg

Secondary

HRP-conjugated anti-rabbit IgG antibody

Predicted band size: 50 kDa

10% SDS-PAGE

Please note: All products are "FOR RESEARCH USE ONLY. NOT FOR USE IN DIAGNOSTIC PROCEDURES"

Our Abpromise to you: Quality guaranteed and expert technical support

- Replacement or refund for products not performing as stated on the datasheet
- Valid for 12 months from date of delivery
- Response to your inquiry within 24 hours
- We provide support in Chinese, English, French, German, Japanese and Spanish
- Extensive multi-media technical resources to help you
- We investigate all quality concerns to ensure our products perform to the highest standards

If the product does not perform as described on this datasheet, we will offer a refund or replacement. For full details of the Abpromise, please visit <https://www.abcam.cn/abpromise> or contact our technical team.

Terms and conditions

- Guarantee only valid for products bought direct from Abcam or one of our authorized distributors