

# Anti-TTL4 antibody ab155801

**1 References**   **1 图像**

### 概述

|       |                                                                                                                                                                                                                                                                                                                                                                                                                                                                                                                                                                                                                 |
|-------|-----------------------------------------------------------------------------------------------------------------------------------------------------------------------------------------------------------------------------------------------------------------------------------------------------------------------------------------------------------------------------------------------------------------------------------------------------------------------------------------------------------------------------------------------------------------------------------------------------------------|
| 产品名称  | Anti-TTL4抗体                                                                                                                                                                                                                                                                                                                                                                                                                                                                                                                                                                                                     |
| 描述    | 兔多克隆抗体to TTL4                                                                                                                                                                                                                                                                                                                                                                                                                                                                                                                                                                                                   |
| 宿主    | Rabbit                                                                                                                                                                                                                                                                                                                                                                                                                                                                                                                                                                                                          |
| 经测试应用 | 适用于: WB                                                                                                                                                                                                                                                                                                                                                                                                                                                                                                                                                                                                         |
| 种属反应性 | 与反应: Human<br>预测可用于: Mouse, Cow                                                                                                                                                                                                                                                                                                                                                                                                                                                                                                |
| 免疫原   | Recombinant fragment, corresponding to a region within internal sequence amino acids 567-798 of Human TTL4 (Uniprot ID Q14679)                                                                                                                                                                                                                                                                                                                                                                                                                                                                                  |
| 阳性对照  | NT2D1, PC3 whole cell lysates                                                                                                                                                                                                                                                                                                                                                                                                                                                                                                                                                                                   |
| 常规说明  | <p>The Life Science industry has been in the grips of a reproducibility crisis for a number of years. Abcam is leading the way in addressing this with our range of recombinant monoclonal antibodies and knockout edited cell lines for gold-standard validation. Please check that this product meets your needs before purchasing.</p> <p>If you have any questions, special requirements or concerns, please send us an inquiry and/or contact our Support team ahead of purchase. Recommended alternatives for this product can be found below, along with publications, customer reviews and Q&amp;As</p> |

### 性能

|      |                                                                                                                                                 |
|------|-------------------------------------------------------------------------------------------------------------------------------------------------|
| 形式   | Liquid                                                                                                                                          |
| 存放说明 | Shipped at 4°C. Upon delivery aliquot. Store at -20°C or -80°C. Avoid freeze / thaw cycle.                                                      |
| 存储溶液 | <p>pH: 7.00</p> <p>Preservative: 0.01% Thimerosal (merthiolate)</p> <p>Constituents: 78.99% PBS, 1% BSA, 20% Glycerol (glycerin, glycerine)</p> |
| 纯度   | Immunogen affinity purified                                                                                                                     |
| 克隆   | 多克隆                                                                                                                                             |
| 同种型  | IgG                                                                                                                                             |

### 应用

## The Abpromise guarantee

**Abpromise™** 承诺保证使用 ab155801 于以下的经测试应用

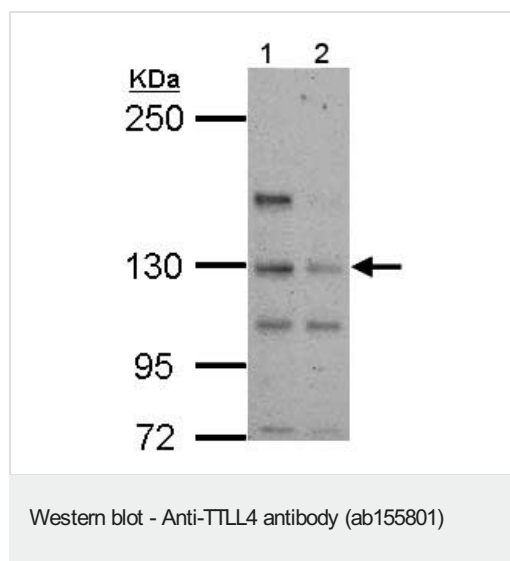
“应用说明”部分 下显示的仅为推荐的起始稀释度;实际最佳的稀释度/浓度应由使用者检定。

| 应用 | Ab 评论 | 说明                                                   |
|----|-------|------------------------------------------------------|
| WB |       | 1/500 - 1/3000. Predicted molecular weight: 113 kDa. |

## 靶标

|       |                                                                                                                                                                                                                             |
|-------|-----------------------------------------------------------------------------------------------------------------------------------------------------------------------------------------------------------------------------|
| 功能    | Polyglutamylase which preferentially modifies beta-tubulin and nucleosome assembly proteins NAP1 and NAP2. Involved in the side-chain initiation step of the polyglutamylation reaction rather than in the elongation step. |
| 序列相似性 | Belongs to the tubulin-tyrosine ligase family.<br>Contains 1 TTL domain.                                                                                                                                                    |
| 细胞定位  | Cell projection > cilium. Cytoplasm > cytoskeleton > cilium basal body. Located in cilia. In some cells, also found in basal bodies.                                                                                        |

## 图片



**All lanes :** Anti-TLL4 antibody (ab155801) at 1/500 dilution

**Lane 1 :** NT2D1 whole cell lysate

**Lane 2 :** PC3 whole cell lysate

Lysates/proteins at 30 µg per lane.

**Predicted band size:** 113 kDa

5% SDS PAGE

**Please note:** All products are "FOR RESEARCH USE ONLY. NOT FOR USE IN DIAGNOSTIC PROCEDURES"

## Our Abpromise to you: Quality guaranteed and expert technical support

- Replacement or refund for products not performing as stated on the datasheet
- Valid for 12 months from date of delivery
- Response to your inquiry within 24 hours
- We provide support in Chinese, English, French, German, Japanese and Spanish
- Extensive multi-media technical resources to help you
- We investigate all quality concerns to ensure our products perform to the highest standards

If the product does not perform as described on this datasheet, we will offer a refund or replacement. For full details of the Abpromise, please visit <https://www.abcam.cn/abpromise> or contact our technical team.

#### **Terms and conditions**

---

- Guarantee only valid for products bought direct from Abcam or one of our authorized distributors