

Anti-TTF2 antibody [EPR12756] ab181116

重组 RabMAb

★★★★☆ **2 Abreviews** 6 图像

概述

产品名称	Anti-TTF2抗体[EPR12756]
描述	兔单克隆抗体[EPR12756] to TTF2
宿主	Rabbit
经测试应用	适用于: Flow Cyt (Intra), ICC/IF, IHC-P, WB
种属反应性	与反应: Human 预测可用于: Mouse, Rat 
免疫原	Synthetic peptide. This information is proprietary to Abcam and/or its suppliers.
阳性对照	Daudi and HeLa cell line lysates; Jurkat cells; Human adenocarcinoma of endometrium tissue; Human pancreas tissue.
常规说明	This product is a recombinant monoclonal antibody, which offers several advantages including: - High batch-to-batch consistency and reproducibility - Improved sensitivity and specificity - Long-term security of supply - Animal-free production For more information see here . Our RabMAb [®] technology is a patented hybridoma-based technology for making rabbit monoclonal antibodies. For details on our patents, please refer to RabMAb[®] patents .

性能

形式	Liquid
存放说明	Shipped at 4°C. Store at +4°C short term (1-2 weeks). Upon delivery aliquot. Store at -20°C long term. Avoid freeze / thaw cycle.
存储溶液	Preservative: 0.01% Sodium azide Constituents: 59% PBS, 40% Glycerol (glycerin, glycerine), 0.05% BSA
纯度	Protein A purified
克隆	单克隆
克隆编号	EPR12756
同种型	IgG

应用

The Abpromise guarantee **Abpromise™**承诺保证使用ab181116于以下的经测试应用

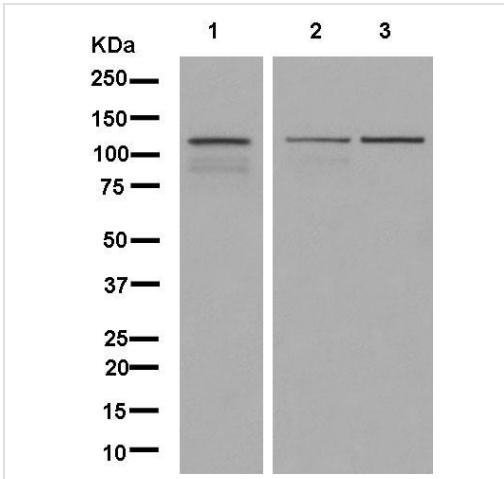
“应用说明”部分 下显示的仅为推荐的起始稀释度;实际最佳的稀释度/浓度应由使用者检定。

应用	Ab评论	说明
Flow Cyt (Intra)		1/60. ab172730 - Rabbit monoclonal IgG, is suitable for use as an isotype control with this antibody.
ICC/IF		1/50 - 1/100.
IHC-P		1/100 - 1/250. Perform heat mediated antigen retrieval with Tris/EDTA buffer pH 9.0 before commencing with IHC staining protocol.
WB		1/1000 - 1/10000. Predicted molecular weight: 130 kDa.

靶标

功能	DsDNA-dependent ATPase which acts as a transcription termination factor by coupling ATP hydrolysis with removal of RNA polymerase II from the DNA template. May contribute to mitotic transcription repression. May also be involved in pre-mRNA splicing.
序列相似性	Belongs to the SNF2/RAD54 helicase family. Contains 1 helicase ATP-binding domain. Contains 1 helicase C-terminal domain.
细胞定位	Cytoplasm. Nucleus. Cytoplasmic during interphase. Relocates to the nucleus as cells enter mitosis.

图片



Western blot - Anti-TTF2 antibody [EPR12756] (ab181116)

All lanes : Anti-TTF2 antibody [EPR12756] (ab181116) at 1/5000 dilution

Lane 1 : Daudi cell line lysate

Lane 2 : HeLa cell line lysate

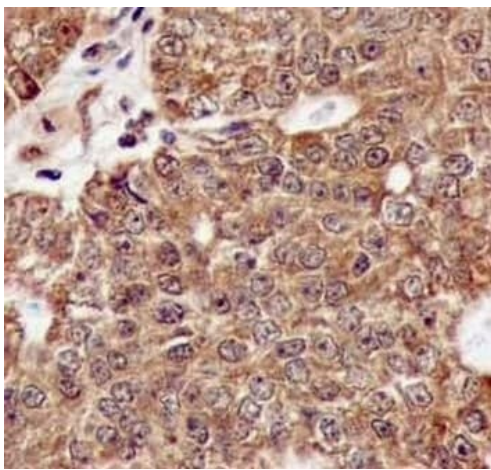
Lane 3 : Jurkat cell line lysate

Lysates/proteins at 20 µg per lane.

Secondary

All lanes : Goat Anti-Rabbit IgG, (H+L), Peroxidase conjugated antibody at 1/1000 dilution

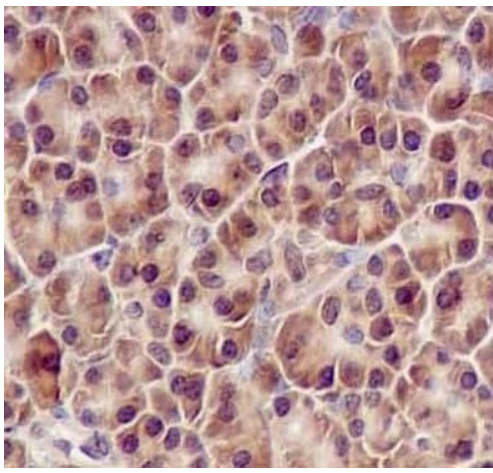
Predicted band size: 130 kDa



Immunohistochemistry (Formalin/PFA-fixed paraffin-embedded sections) - Anti-TTF2 antibody [EPR12756] (ab181116)

Immunohistochemical analysis of paraffin embedded Human adenocarcinoma of endometrium tissue labeling TTF2 with ab181116 at 1/250. Prediluted (ready to use) HRP Polymer for Rabbit IgG was used as a secondary antibody. Counter stain: Hematoxylin

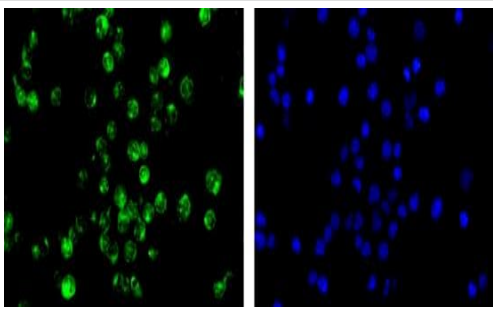
Perform heat mediated antigen retrieval with EDTA buffer pH 9 before commencing with IHC staining protocol.



Immunohistochemistry (Formalin/PFA-fixed paraffin-embedded sections) - Anti-TTF2 antibody [EPR12756] (ab181116)

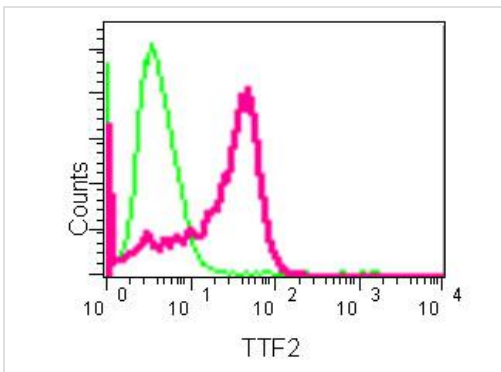
Immunohistochemical analysis of paraffin embedded Human pancreas tissue labeling TTF2 with ab181116 at 1/250 dilution. Prediluted (ready to use) HRP Polymer for Rabbit IgG was used as a secondary antibody. Counter stain: Hematoxylin

Perform heat mediated antigen retrieval with EDTA buffer pH 9 before commencing with IHC staining protocol.



Immunocytochemistry/ Immunofluorescence - Anti-TTF2 antibody [EPR12756] (ab181116)


Immunofluorescent analysis of acetone-fixed Jurkat cells labeling TTF2 with ab181116 at 1/100 (green) dilution. Goat anti rabbit IgG (Alexa Fluor® 488) was used for secondary antibody staining at a dilution of 1/200. Counter stain: Dapi (blue)



Flow Cytometry (Intracellular) - Anti-TTF2 antibody [EPR12756] (ab181116)

Intracellular flow cytometric analysis of 2% paraformaldehyde-fixed Jurkat cells labeling TTF2 with ab181116 at 1/60 dilution, followed by Goat anti rabbit IgG (FITC) at 1/150 dilution (pink). Rabbit monoclonal IgG was used as Isotype control (green).

Why choose a recombinant antibody?



- Research with confidence**
Consistent and reproducible results
- Long-term and scalable supply**
Recombinant technology
- Success from the first experiment**
Confirmed specificity
- Ethical standards compliant**
Animal-free production

Anti-TTF2 antibody [EPR12756] (ab181116)

Please note: All products are "FOR RESEARCH USE ONLY. NOT FOR USE IN DIAGNOSTIC PROCEDURES"

Our Abpromise to you: Quality guaranteed and expert technical support

- Replacement or refund for products not performing as stated on the datasheet
- Valid for 12 months from date of delivery
- Response to your inquiry within 24 hours
- We provide support in Chinese, English, French, German, Japanese and Spanish
- Extensive multi-media technical resources to help you
- We investigate all quality concerns to ensure our products perform to the highest standards

If the product does not perform as described on this datasheet, we will offer a refund or replacement. For full details of the Abpromise, please visit <https://www.abcam.cn/abpromise> or contact our technical team.

Terms and conditions

- Guarantee only valid for products bought direct from Abcam or one of our authorized distributors