

Anti-TTF1 antibody [SP141] ab227652

重组 RabMAb

1 References 12 图像

概述

产品名称	Anti-TTF1抗体[SP141]
描述	兔单克隆抗体[SP141] to TTF1
宿主	Rabbit
经测试应用	适用于: Flow Cyt, IHC-P, Flow Cyt (Intra), ICC/IF, IHC-Fr
种属反应性	与反应: Mouse, Rat, Human
免疫原	Synthetic peptide. This information is proprietary to Abcam and/or its suppliers.
阳性对照	IHC-P: Human thyroid, lung, lung carcinoma, Mouse lung, and Rat lung tissue; Flow Cyt: HeLa cells. Flow Cyt (Intra): Human thyroid.
常规说明	This product is FOR RESEARCH USE ONLY. For commercial use, please contact partnerships@abcam.com .

性能

形式	Liquid
存放说明	Shipped at 4°C. Store at +4°C short term (1-2 weeks). Upon delivery aliquot. Store at -20°C long term. Avoid freeze / thaw cycle.
存储溶液	pH: 7.60 Preservative: 0.1% Sodium azide Constituents: PBS, 1% BSA
纯度	Protein A/G purified
纯化说明	Purified from TCS by protein A/G.
克隆	单克隆
克隆编号	SP141
同种型	IgG

应用

The Abpromise guarantee Abpromise™承诺保证使用ab227652于以下的经测试应用

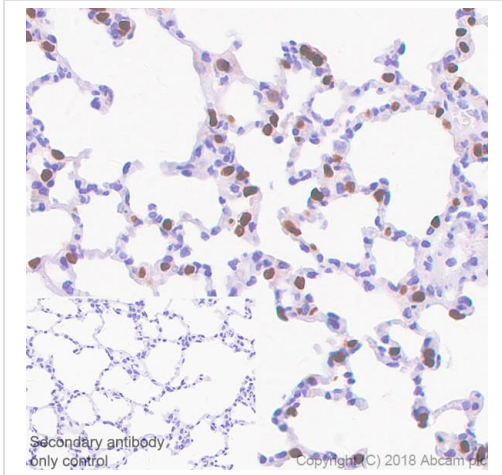
“应用说明”部分 下显示的仅为推荐的起始稀释度;实际最佳的稀释度/浓度应由使用者检定。

应用	Ab评论	说明
Flow Cyt		Use at an assay dependent concentration.
IHC-P		1/100. Perform heat mediated antigen retrieval with 1 mM EDTA buffer pH 8.0 before commencing with IHC staining protocol. Primary antibody incubation for 30 minutes at room temperature.
Flow Cyt (Intra)		1/100. Primary antibody incubation for 30 minutes at 4°C.
ICC/IF		1/25.
IHC-Fr		1/20.

靶标

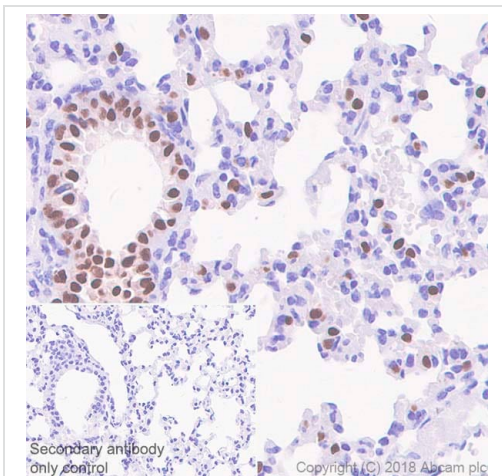
功能	Transcription factor that binds and activates the promoter of thyroid specific genes such as thyroglobulin, thyroperoxidase, and thyrotropin receptor. Crucial in the maintenance of the thyroid differentiation phenotype. May play a role in lung development and surfactant homeostasis.
组织特异性	Thyroid and lung.
疾病相关	Defects in NKX2-1 are the cause of benign hereditary chorea (BHC) [MIM:118700]; also known as hereditary chorea without dementia. BHC is an autosomal dominant movement disorder. The early onset of symptoms (usually before the age of 5) and the observation that in some BHC families the symptoms tend to decrease in adulthood suggests that the disorder results from a developmental disturbance of the brain. BHC is non-progressive and patients have normal or slightly below normal intelligence. There is considerable inter- and intrafamilial variability, including dysarthria, axial dystonia and gait disturbances. Defects in NKX2-1 are the cause of choreoathetosis, hypothyroidism, and neonatal respiratory distress (CHNRD) [MIM:610978]. This syndrome include neurological, thyroid, and respiratory problems.
序列相似性	Belongs to the NK-2 homeobox family. Contains 1 homeobox DNA-binding domain.
翻译后修饰	Phosphorylated on serine residues.
细胞定位	Nucleus.

图片



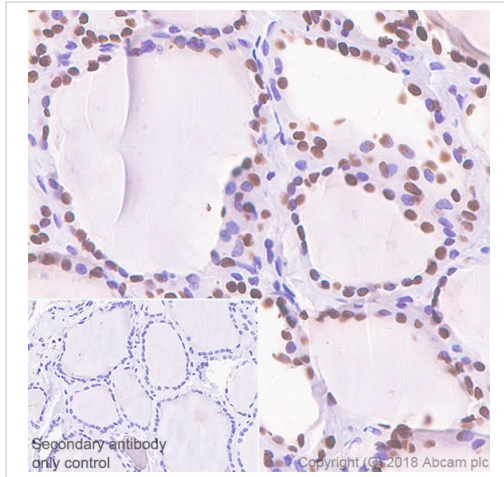
Immunohistochemistry (Formalin/PFA-fixed paraffin-embedded sections) - Anti-TTF1 antibody [SP141] (ab227652)

Immunohistochemistry (Formalin/PFA-fixed paraffin-embedded sections) analysis of Rat lung tissue sections labeling TTF1 with ab227652 at 1/100 dilution (1.70 µg/ml). Heat mediated antigen retrieval was performed Heat mediated antigen retrieval with Tris-EDTA buffer (pH 9.0, epitope retrieval solution 2) for 10 mins. Rabbit specific IHC polymer detection kit HRP/DAB (**ab209101**) was used as the secondary antibody. Negative control: PBS instead of the primary antibody. Hematoxylin was used as a counterstain.



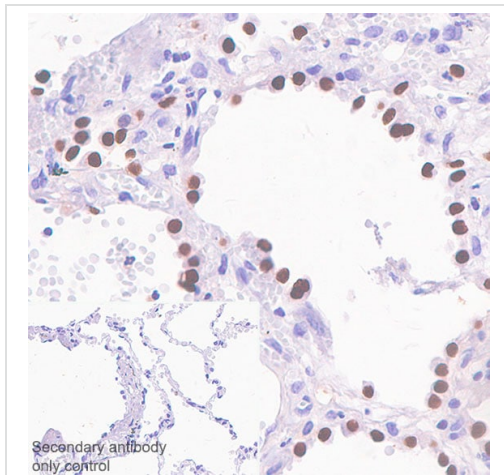
Immunohistochemistry (Formalin/PFA-fixed paraffin-embedded sections) - Anti-TTF1 antibody [SP141] (ab227652)

Immunohistochemistry (Formalin/PFA-fixed paraffin-embedded sections) analysis of Mouse lung tissue sections labeling TTF1 with ab227652 at 1/100 dilution (1.70 µg/ml). Heat mediated antigen retrieval was performed Heat mediated antigen retrieval with Tris-EDTA buffer (pH 9.0, epitope retrieval solution 2) for 10 mins. Rabbit specific IHC polymer detection kit HRP/DAB (**ab209101**) was used as the secondary antibody. Negative control: PBS instead of the primary antibody. Hematoxylin was used as a counterstain.



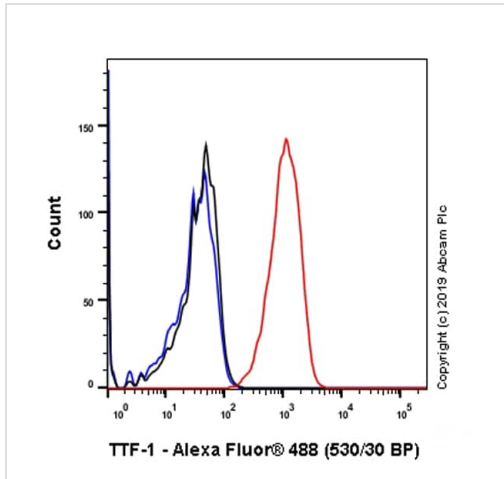
Immunohistochemistry (Formalin/PFA-fixed paraffin-embedded sections) - Anti-TTF1 antibody [SP141] (ab227652)

Immunohistochemistry (Formalin/PFA-fixed paraffin-embedded sections) analysis of Human thyroid tissue sections labeling TTF1 with ab227652 at 1/100 dilution (1.70 µg/ml). Heat mediated antigen retrieval was performed Heat mediated antigen retrieval with Tris-EDTA buffer (pH 9.0, epitope retrieval solution 2) for 10 mins. Rabbit specific IHC polymer detection kit HRP/DAB (**ab209101**) was used as the secondary antibody. Negative control: PBS instead of the primary antibody. Hematoxylin was used as a counterstain.



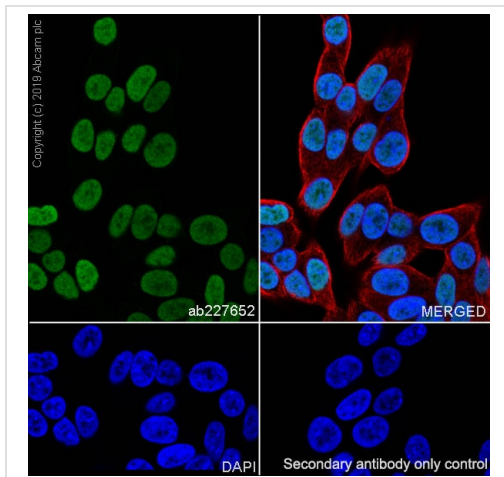
Immunohistochemistry (Formalin/PFA-fixed paraffin-embedded sections) - Anti-TTF1 antibody [SP141] (ab227652)

Immunohistochemistry (Formalin/PFA-fixed paraffin-embedded sections) analysis of Human lung tissue sections labeling TTF1 with ab227652 at 1/100 dilution (1.70 µg/ml). Heat mediated antigen retrieval was performed Heat mediated antigen retrieval with Tris-EDTA buffer (pH 9.0, epitope retrieval solution 2) for 10 mins. Rabbit specific IHC polymer detection kit HRP/DAB (**ab209101**) was used as the secondary antibody. Negative control: PBS instead of the primary antibody. Hematoxylin was used as a counterstain.



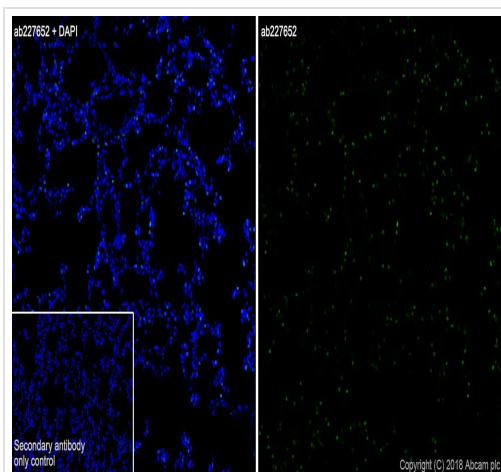
Flow Cytometry (Intracellular) - Anti-TTF1 antibody
[SP141] (ab227652)

Flow Cytometry analysis of TT (Human thyroid carcinoma epithelial cell) cells labeling TTF1 with purified ab227652 at 1:170 dilution (1 µg/ml) (red). Cells were fixed with 4% paraformaldehyde and permeabilised with 90% methanol. A Goat anti rabbit IgG (Alexa Fluor® 488, [ab150077](#)) secondary antibody was used at 1:2000 dilution. Isotype control - Rabbit monoclonal IgG ([ab172730](#)) / Black. Unlabeled control - Unlabelled cells / blue.



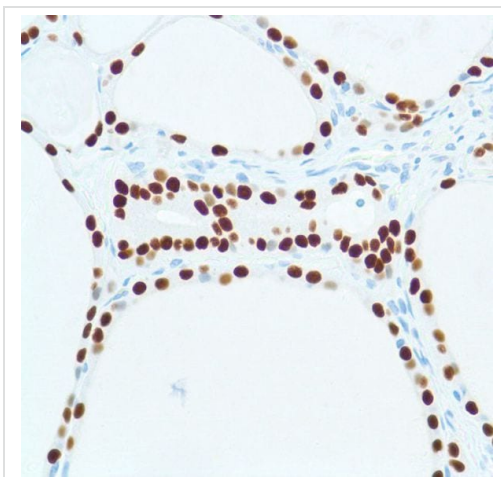
Immunocytochemistry/ Immunofluorescence - Anti-TTF1 antibody [SP141] (ab227652)

Immunocytochemistry/ Immunofluorescence analysis of TT (Human thyroid carcinoma epithelial cell) cells labeling TTF1 with purified ab227652 at 1:25 (6.8 µg/ml). Cells were fixed in 4% paraformaldehyde and permeabilized with 0.1% Triton X-100. Cells were counterstained with Ab195889 Anti-alpha Tubulin antibody [DM1A] - Microtubule Marker (Alexa Fluor® 594) 1:200 (2.5 µg/ml). Goat anti rabbit IgG (Alexa Fluor® 488, [ab150077](#)) was used as the secondary antibody at 1:1000 (2 µg/ml) dilution. DAPI (blue) was used as nuclear counterstain. PBS instead of the primary antibody was used as the secondary antibody only control.



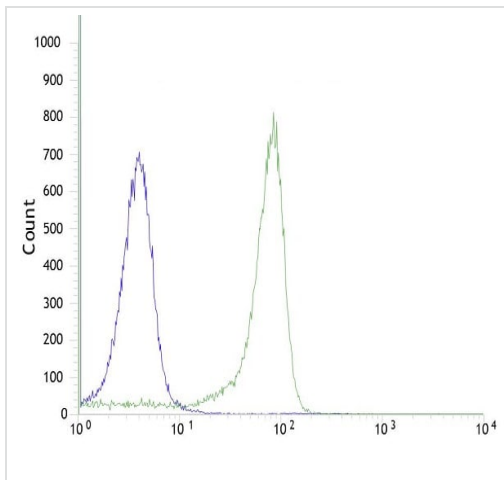
Immunohistochemistry (Frozen sections) - Anti-TTF1 antibody [SP141] (ab227652)

Immunohistochemistry (Frozen sections) analysis of rat lung tissue sections labeling TTF1 with purified ab227652 at 1:20 (8.5 µg/ml). Heat mediated antigen retrieval was performed using sodium citrate buffer (10mM citrate pH 6.0 + 0.05% Tween-20). Fixed with 4% paraformaldehyde and permeabilised using 0.2% Triton X-100. Goat anti rabbit IgG (Alexa Fluor® 488, [ab150077](#)) was used as the secondary antibody. Negative control: PBS instead of the primary antibody. DAPI was used as a Nuclear stain.



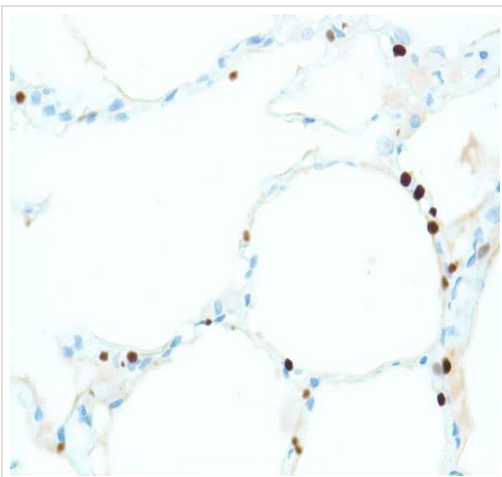
Immunohistochemistry (Formalin/PFA-fixed paraffin-embedded sections) - Anti-TTF1 antibody [SP141] (ab227652)

Formalin-fixed, paraffin-embedded human thyroid tissue stained for TTF1 using ab227652 at 1/100 dilution in immunohistochemical analysis.



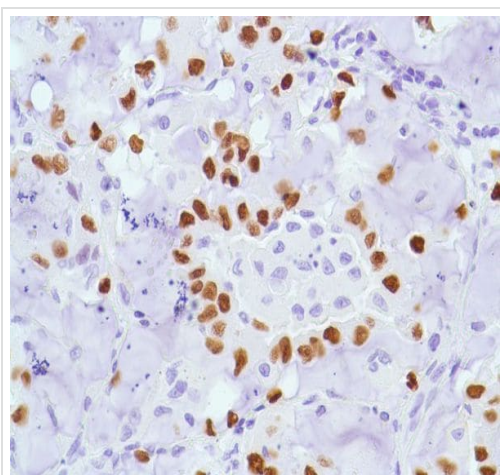
Flow cytometric analysis of HeLa (human epithelial cell line from cervix adenocarcinoma) cell line labeling TTF1 with ab227652 at 1/100 dilution (green) compared with a rabbit IgG negative control (blue).

Flow Cytometry (Intracellular) - Anti-TTF1 antibody
[SP141] (ab227652)



Formalin-fixed, paraffin-embedded human lung tissue stained for TTF1 using ab227652 at 1/100 dilution in immunohistochemical analysis.

Immunohistochemistry (Formalin/PFA-fixed paraffin-
embedded sections) - Anti-TTF1 antibody [SP141]
(ab227652)



Formalin-fixed, paraffin-embedded human lung adenocarcinoma tissue stained for TTF1 using ab227652 at 1/100 dilution in immunohistochemical analysis.

Immunohistochemistry (Formalin/PFA-fixed paraffin-embedded sections) - Anti-TTF1 antibody [SP141] (ab227652)

Why choose a recombinant antibody?



Research with confidence
Consistent and reproducible results



Long-term and scalable supply
Recombinant technology



Success from the first experiment
Confirmed specificity



Ethical standards compliant
Animal-free production

Anti-TTF1 antibody [SP141] (ab227652)

Please note: All products are "FOR RESEARCH USE ONLY. NOT FOR USE IN DIAGNOSTIC PROCEDURES"

Our Abpromise to you: Quality guaranteed and expert technical support

- Replacement or refund for products not performing as stated on the datasheet

- Valid for 12 months from date of delivery
- Response to your inquiry within 24 hours
- We provide support in Chinese, English, French, German, Japanese and Spanish
- Extensive multi-media technical resources to help you
- We investigate all quality concerns to ensure our products perform to the highest standards

If the product does not perform as described on this datasheet, we will offer a refund or replacement. For full details of the Abpromise, please visit <https://www.abcam.cn/abpromise> or contact our technical team.

Terms and conditions

- Guarantee only valid for products bought direct from Abcam or one of our authorized distributors