


### Anti-TTC11/FIS1 antibody ab229969

[2 References](#) [4 图像](#)

#### 概述

<b>产品名称</b>	Anti-TTC11/FIS1抗体
<b>描述</b>	兔多克隆抗体to TTC11/FIS1
<b>宿主</b>	Rabbit
<b>经测试应用</b>	<b>适用于:</b> WB, IP, IHC-P, ICC/IF
<b>种属反应性</b>	<b>与反应:</b> Mouse, Human <b>预测可用于:</b> Rat, Cow 
<b>免疫原</b>	Recombinant fragment corresponding to Human TTC11/FIS1 aa 1-150. Database link: <a href="#">Q9Y3D6</a> <a href="#">Run BLAST with</a> <a href="#">Run BLAST with</a>
<b>阳性对照</b>	WB: SH-SY5Y whole cell lysate; Mouse heart and brain lysates. IHC-P: Human kidney tissue. ICC/IF: HeLa cells. IP: MCF7 whole cell lysate.
<b>常规说明</b>	The Life Science industry has been in the grips of a reproducibility crisis for a number of years. Abcam is leading the way in addressing this with our range of recombinant monoclonal antibodies and knockout edited cell lines for gold-standard validation. Please check that this product meets your needs before purchasing.  If you have any questions, special requirements or concerns, please send us an inquiry and/or contact our Support team ahead of purchase. Recommended alternatives for this product can be found below, along with publications, customer reviews and Q&As

#### 性能

<b>形式</b>	Liquid
<b>存放说明</b>	Shipped at 4°C. Store at +4°C short term (1-2 weeks). Upon delivery aliquot. Store at -20°C long term. Avoid freeze / thaw cycle.
<b>存储溶液</b>	pH: 7.40 Constituents: 50% Glycerol (glycerin, glycerine), 1% PBS, 0.03% Proclin 300
<b>纯度</b>	Protein G purified
<b>纯化说明</b>	Purity >95%.
<b>克隆</b>	多克隆
<b>同种型</b>	IgG

## 应用

### The Abpromise guarantee

**Abpromise™** 承诺保证使用 ab229969 于以下的经测试应用

“应用说明”部分下显示的仅为推荐的起始稀释度；实际最佳的稀释度/浓度应由使用者检定。

应用	Ab评论	说明
WB		1/1000 - 1/5000. Detects a band of approximately 17 kDa (predicted molecular weight: 17 kDa).
IP		1/200 - 1/2000.
IHC-P		1/500 - 1/1000. Perform heat mediated antigen retrieval with citrate buffer pH 6 before commencing with IHC staining protocol.
ICC/IF		1/50 - 1/500.

## 靶标

### 功能

Promotes the fragmentation of the mitochondrial network and its perinuclear clustering. Can induce cytochrome c release from the mitochondrion to the cytosol, ultimately leading to apoptosis. Also mediates peroxisomal fission.

### 序列相似性

Belongs to the FIS1 family.  
Contains 1 TPR repeat.

### 结构域

The C-terminus is required for mitochondrial or peroxisomal localization, while the N-terminus is necessary for mitochondrial or peroxisomal fission, localization and regulation of the interaction with DNM1L.

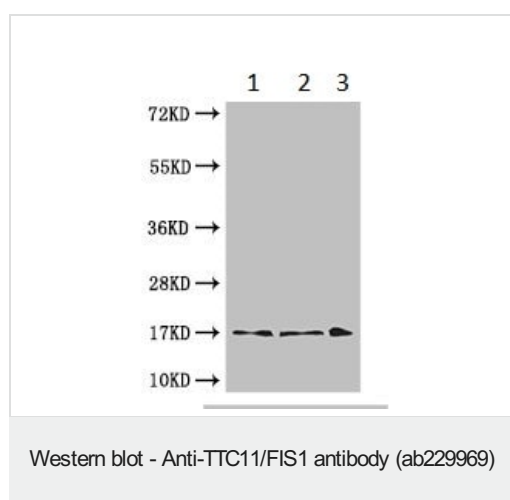
### 翻译后修饰

Ubiquitinated by MARCH5.

### 细胞定位

Mitochondrion outer membrane. Peroxisome membrane.

## 图片



**All lanes :** Anti-TTC11/FIS1 antibody (ab229969) at 1/1000 dilution

**Lane 1 :** SH-SY5Y (human neuroblastoma cell line from bone marrow) whole cell lysate

**Lane 2 :** Mouse brain lysate

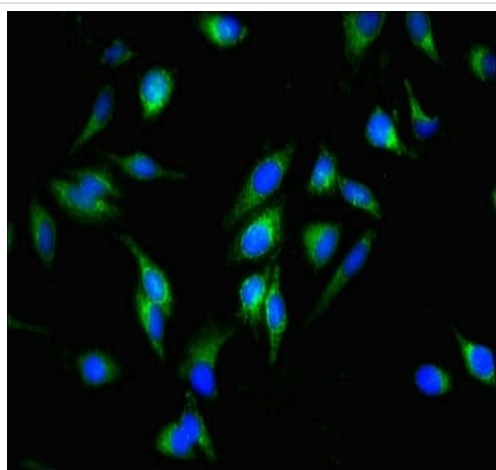
**Lane 3 :** Mouse heart lysate

### Secondary

**All lanes :** Goat polyclonal to rabbit IgG at 1/50000 dilution

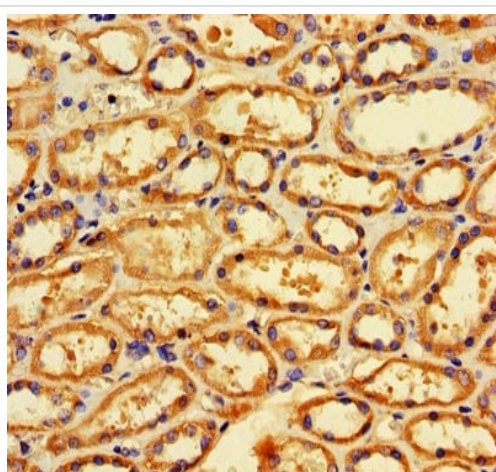
**Predicted band size:** 17 kDa

**Observed band size:** 17 kDa



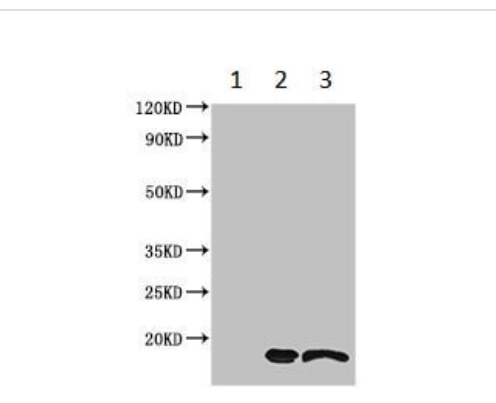
Immunocytochemistry/ Immunofluorescence - Anti-TTC11/FIS1 antibody (ab229969)

Immunofluorescent analysis of HeLa (human epithelial cell line from cervix adenocarcinoma) cells stained for TTC11/FIS1 (green) using ab229969 at 1/100 dilution in ICC/IF, followed by Alexa Fluor 488<sup>®</sup> conjugated Goat Anti-Rabbit IgG (H+L).



Immunohistochemistry (Formalin/PFA-fixed paraffin-embedded sections) - Anti-TTC11/FIS1 antibody (ab229969)

Paraffin-embedded human kidney tissue stained for TTC11/FIS1 using ab229969 at 1/600 dilution in immunohistochemical analysis. After dewaxing and hydration, antigen retrieval was mediated by high pressure in a citrate buffer (pH 6.0). Section was blocked with 10% normal goat serum 30min at RT. Then primary antibody (1% BSA) was incubated at 4°C overnight. The primary is detected by a biotinylated secondary antibody and visualized using an HRP conjugated SP system.



Immunoprecipitation - Anti-TTC11/FIS1 antibody (ab229969)

TTC11/FIS1 was immunoprecipitated from 500 µg MCF7 (human breast adenocarcinoma cell line) whole cell lysate with 4 µg of ab229969.

Lane 1: Rabbit monoclonal IgG (1 µg) IP instead of ab229969 in MCF7 whole cell lysate.

Lane 2: ab229969 IP in MCF whole cell lysate.

Lane 3: MCF7 whole cell lysate 20 ug (input).

For western blotting, an HRP-conjugated light chain specific antibody was used as the Secondary antibody at 1/50000 dilution.

**Please note:** All products are "FOR RESEARCH USE ONLY. NOT FOR USE IN DIAGNOSTIC PROCEDURES"

### **Our Abpromise to you: Quality guaranteed and expert technical support**

---

- Replacement or refund for products not performing as stated on the datasheet
- Valid for 12 months from date of delivery
- Response to your inquiry within 24 hours
  
- We provide support in Chinese, English, French, German, Japanese and Spanish
- Extensive multi-media technical resources to help you
- We investigate all quality concerns to ensure our products perform to the highest standards

If the product does not perform as described on this datasheet, we will offer a refund or replacement. For full details of the Abpromise, please visit <https://www.abcam.cn/abpromise> or contact our technical team.

### **Terms and conditions**

---

- Guarantee only valid for products bought direct from Abcam or one of our authorized distributors