

# Anti-Tryptophan Hydroxylase/TPH (phospho S260) antibody ab30574

**4 References**   [1 图像](#)

### 概述

产品名称	Anti-Tryptophan Hydroxylase/TPH (phospho S260)抗体
描述	兔多克隆抗体to Tryptophan Hydroxylase/TPH (phospho S260)
宿主	Rabbit
经测试应用	适用于: WB
种属反应性	与反应: Rat
免疫原	Synthetic peptide corresponding to Rat Tryptophan Hydroxylase/TPH (phospho S260).
阳性对照	Rat brain stem lysate, human dorsal Raphe nucleus.
常规说明	<p>The Life Science industry has been in the grips of a reproducibility crisis for a number of years. Abcam is leading the way in addressing this with our range of recombinant monoclonal antibodies and knockout edited cell lines for gold-standard validation. Please check that this product meets your needs before purchasing.</p> <p>If you have any questions, special requirements or concerns, please send us an inquiry and/or contact our Support team ahead of purchase. Recommended alternatives for this product can be found below, along with publications, customer reviews and Q&amp;As</p>

### 性能

形式	Liquid
存放说明	Shipped at 4°C. Upon delivery aliquot and store at -20°C. Avoid freeze / thaw cycles.
存储溶液	Constituents: 0.238% HEPES, 50% Glycerol, 0.87% Sodium chloride, 0.01% BSA
纯度	Immunogen affinity purified
纯化说明	Ab30574 was affinity purified via sequential chromatography on phospho and dephosphopeptide affinity columns.
克隆	多克隆
同种型	IgG

### 应用

The Abpromise guarantee

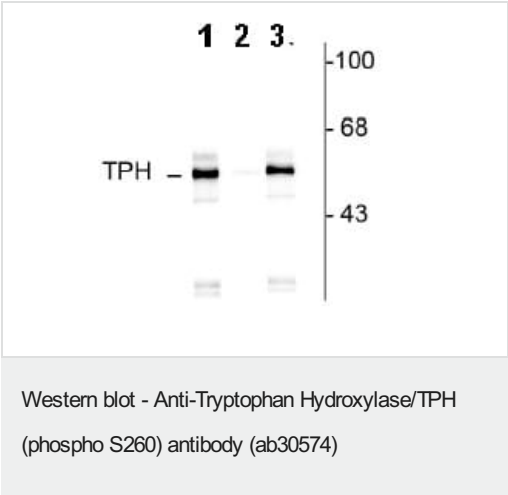
Abpromise™承诺保证使用ab30574于以下的经测试应用

“应用说明”部分 下显示的仅为推荐的起始稀释度;实际最佳的稀释度/浓度应由使用者检定。

应用	Ab评论	说明
WB		1/1000. Detects a band of approximately 55 kDa (predicted molecular weight: 51 kDa).

靶标	
组织特异性	Isoform 2 seems to be less widely expressed than isoform 1.
通路	Aromatic compound metabolism; serotonin biosynthesis; serotonin from L-tryptophan: step 1/2.
序列相似性	Belongs to the bipterin-dependent aromatic amino acid hydroxylase family. Contains 1 ACT domain.

图片



**All lanes :** Anti-Tryptophan Hydroxylase/TPH (phospho S260) antibody (ab30574) at 1/1000 dilution

**Lane 1 :** rat brain stem lysate (control)

**Lane 2 :** rat brain stem lysate, incubated with S260 phosphopeptide (negative control)

**Lane 3 :** rat brain stem lysate, incubated with corresponding non phosphopeptide.

Lysates/proteins at 15 µg per lane.

**Predicted band size:** 51 kDa

**Observed band size:** 55 kDa

**Additional bands at:** <43 kDa, 48 kDa, 59 kDa. We are unsure as to the identity of these extra bands.

In lane 2, the labeling is specifically blocked by the S260 phosphopeptide used as antigen.

In lane 3, the corresponding nonphosphopeptide did not block the immunolabeling.

Please note: All products are "FOR RESEARCH USE ONLY. NOT FOR USE IN DIAGNOSTIC PROCEDURES"

### **Our Abpromise to you: Quality guaranteed and expert technical support**

---

- Replacement or refund for products not performing as stated on the datasheet
- Valid for 12 months from date of delivery
- Response to your inquiry within 24 hours
  
- We provide support in Chinese, English, French, German, Japanese and Spanish
- Extensive multi-media technical resources to help you
- We investigate all quality concerns to ensure our products perform to the highest standards

If the product does not perform as described on this datasheet, we will offer a refund or replacement. For full details of the Abpromise, please visit <https://www.abcam.cn/abpromise> or contact our technical team.

### **Terms and conditions**

---

- Guarantee only valid for products bought direct from Abcam or one of our authorized distributors