


Anti-TRIM32 antibody [EP6355] ab131223

RabMAb

1 References 3 图像

概述

产品名称	Anti-TRIM32抗体[EP6355]
描述	兔单克隆抗体[EP6355] to TRIM32
宿主	Rabbit
经测试应用	适用于: WB 不适用于: IHC-P or IP
种属反应性	与反应: Human 预测可用于: Mouse 
免疫原	Synthetic peptide. This information is proprietary to Abcam and/or its suppliers.
阳性对照	Human fetal muscle lysate.
常规说明	<p>Our RabMAb[®] technology is a patented hybridoma-based technology for making rabbit monoclonal antibodies. For details on our patents, please refer to RabMAb[®] patents.</p> <p>The Life Science industry has been in the grips of a reproducibility crisis for a number of years. Abcam is leading the way in addressing this with our range of recombinant monoclonal antibodies and knockout edited cell lines for gold-standard validation. Please check that this product meets your needs before purchasing.</p> <p>If you have any questions, special requirements or concerns, please send us an inquiry and/or contact our Support team ahead of purchase. Recommended alternatives for this product can be found below, along with publications, customer reviews and Q&As</p> <p>Rat: We have preliminary internal testing data to indicate this antibody may not react with this species. Please contact us for more information.</p>

性能

形式	Liquid
存放说明	Shipped at 4°C. Store at +4°C short term (1-2 weeks). Upon delivery aliquot. Store at -20°C. Stable for 12 months at -20°C.
解离常数 (K _D)	K _D = 5.60 x 10 ⁻¹⁰ M





[Learn more about K_D](#)

存储溶液	pH: 7.20 Preservative: 0.01% Sodium azide Constituents: 9% PBS, 40% Glycerol (glycerin, glycerine), 0.05% BSA, 50% Tissue culture supernatant
纯度	Protein A purified
克隆	单克隆
克隆编号	EP6355
同种型	IgG

应用

The Abpromise guarantee **Abpromise™** 承诺保证使用 ab131223 于以下的经测试应用

“应用说明”部分下显示的仅为推荐的起始稀释度；实际最佳的稀释度/浓度应由使用者检定。

应用	Ab评论	说明
WB		1/1000 - 1/10000. Detects a band of approximately 78 kDa (predicted molecular weight: 72 kDa).

应用说明 Is unsuitable for IHC-P or IP.

靶标

功能 Has an E3 ubiquitin ligase activity. Ubiquitinates DTNBP1 (dysbindin) and promotes its degradation. May play a significant role in mediating the biological activity of the HIV-1 Tat protein in vivo. Binds specifically to the activation domain of HIV-1 Tat and can also interact with the HIV-2 and EIAV Tat proteins in vivo.

组织特异性 Spleen, thymus, prostate, testis, ovary, intestine, colon and skeletal muscle.

通路 Protein modification; protein ubiquitination.

疾病相关 Limb-girdle muscular dystrophy 2H (LGMD2H) [MIM:254110]: An autosomal recessive degenerative myopathy characterized by pelvic girdle, shoulder girdle and quadriceps muscle weakness. Clinical phenotype and severity are highly variable. Disease progression is slow and most patients remain ambulatory into the sixth decade of life. Note=The disease is caused by mutations affecting the gene represented in this entry.
Bardet-Biedl syndrome 11 (BBS11) [MIM:209900]: A syndrome characterized by usually severe pigmentary retinopathy, early-onset obesity, polydactyly, hypogenitalism, renal malformation and mental retardation. Secondary features include diabetes mellitus, hypertension and congenital heart disease. Bardet-Biedl syndrome inheritance is autosomal recessive, but three mutated alleles (two at one locus, and a third at a second locus) may be required for clinical manifestation of some forms of the disease. Note=The disease is caused by mutations affecting the gene represented in this entry.

序列相似性 Belongs to the TRIM/RBCC family.
Contains 1 B box-type zinc finger.
Contains 5 NHL repeats.

Contains 1 RING-type zinc finger.

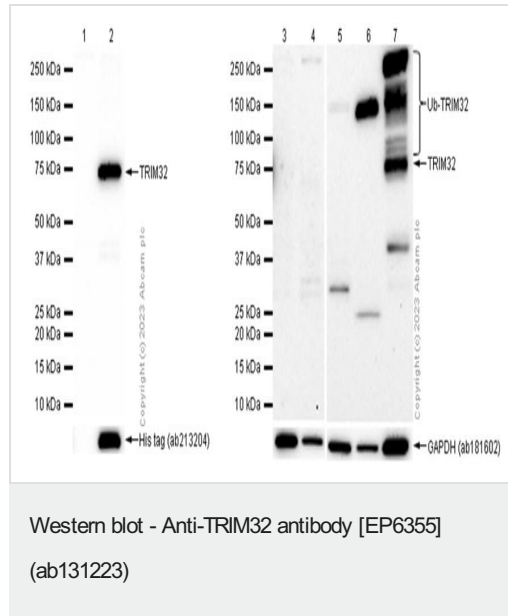
翻译后修饰

Ubiquitinated.

细胞定位

Cytoplasm. Localized in cytoplasmic bodies, often located around the nucleus.

图片



All lanes : Anti-TRIM32 antibody [EP6355] (ab131223) at 1/200 dilution

Lane 1 : 293T (Human embryonic kidney epithelial cell) transfected with an empty vector (vector control), containing a myc-His-tag®, whole cell lysate

Lane 2 : 293T transfected with TRIM32 expression vector containing a myc-His-tag®, whole cell lysate

Lane 3 : SK-BR-3 (Human breast adenocarcinoma epithelial cell) whole cell lysate

Lane 4 : T-47D (Human ductal breast epithelial tumor epithelial cell) whole cell lysate

Lane 5 : MCF7 (Human breast adenocarcinoma epithelial cell) whole cell lysate

Lane 6 : NCI-H460 (Human Large Cell Lung Cancer epithelial cell) whole cell lysate

Lane 7 : Human skeletal muscle lysate

Lysates/proteins at 20 µg per lane.

Secondary

All lanes : Goat Anti-Rabbit IgG (HRP) with minimal cross-reactivity with human IgG at 1/2000 dilution

Performed under reducing conditions.

Predicted band size: 72 kDa

Observed band size: 73 kDa

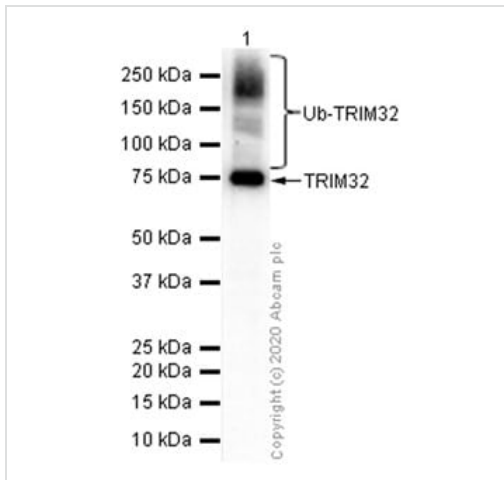
Although some papers support the expression of TRIM32 in SK-BR-3, T-47D, MCF7, MDA-MB-435S, MD-MB-468 (PMID: 29721043), ab131223 can't detect monomer TRIM32 band of interest in these cell lines.

The bands above 75kDa are ubiquitination bands which was described in the literature (PMID: 30884854, 16243356,

21628460).

Blocking buffer and concentration: 5% NFD/DM/TBST.

Exposure time: Lane 1 & Lane 2: 3 seconds; Lane 3- Lane7: 180 seconds.



Western blot - Anti-TRIM32 antibody [EP6355]
(ab131223)

Anti-TRIM32 antibody [EP6355] (ab131223) at 1/2000 dilution +
Human skeletal muscle lysate at 15 μ g

Secondary

Goat Anti-Rabbit IgG (HRP) with minimal cross-reactivity with
human IgG at 1/2000 dilution

Performed under reducing conditions.

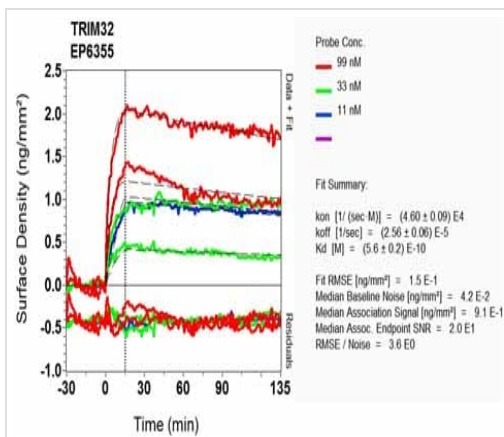
Predicted band size: 72 kDa

Observed band size: 73 kDa

Exposure time: 60 seconds

The bands above 75kDa are ubiquitination bands which was
described in the literature (PMID: 30884854, 16243356,
21628460).

Blocking buffer and concentration: 5% NFD/DM/TBST.



Ox-RD Scanning - Anti-TRIM32 antibody [EP6355]
(ab131223)

Equilibrium dissociation constant (K_D)

Learn more about K_D

[Click here to learn more about \$K_D\$](#)

Please note: All products are "FOR RESEARCH USE ONLY. NOT FOR USE IN DIAGNOSTIC PROCEDURES"

Our Abpromise to you: Quality guaranteed and expert technical support

- Replacement or refund for products not performing as stated on the datasheet
- Valid for 12 months from date of delivery
- Response to your inquiry within 24 hours

- We provide support in Chinese, English, French, German, Japanese and Spanish
- Extensive multi-media technical resources to help you
- We investigate all quality concerns to ensure our products perform to the highest standards

If the product does not perform as described on this datasheet, we will offer a refund or replacement. For full details of the Abpromise, please visit <https://www.abcam.cn/abpromise> or contact our technical team.

Terms and conditions

- Guarantee only valid for products bought direct from Abcam or one of our authorized distributors