


Anti-Transaldolase 1 antibody ab187689

[1 References](#) [2 图像](#)

概述

产品名称	Anti-Transaldolase 1抗体
描述	兔多克隆抗体to Transaldolase 1
宿主	Rabbit
经测试应用	适用于: WB, IP
种属反应性	与反应: Mouse, Human 预测可用于: Horse, Guinea pig, Dog, Pig, Chimpanzee, Cynomolgus monkey, Rhesus monkey, Gorilla, Orangutan 
免疫原	Synthetic peptide within Human Transaldolase 1 aa 200-300. The exact immunogen sequence used to generate this antibody is proprietary information. If additional detail on the immunogen is needed to determine the suitability of the antibody for your needs, please contact our Scientific Support team to discuss your requirements. NP_006746.1. Database link: P37837
阳性对照	HeLa, 293T, Jurkat, TCMK1 and NIH 3T3 whole cell lysates.
常规说明	<p>The Life Science industry has been in the grips of a reproducibility crisis for a number of years. Abcam is leading the way in addressing this with our range of recombinant monoclonal antibodies and knockout edited cell lines for gold-standard validation. Please check that this product meets your needs before purchasing.</p> <p>If you have any questions, special requirements or concerns, please send us an inquiry and/or contact our Support team ahead of purchase. Recommended alternatives for this product can be found below, along with publications, customer reviews and Q&As</p>



[Run BLAST with](#)



[Run BLAST with](#)

性能

形式	Liquid
存放说明	Shipped at 4°C. Store at +4°C short term (1-2 weeks). Upon delivery aliquot. Store at -20°C long term. Avoid freeze / thaw cycle.
存储溶液	<p>pH: 7</p> <p>Preservative: 0.09% Sodium azide</p> <p>Constituent: 99% Tris citrate/phosphate</p> <p>pH 7 to 8</p>

纯度	Immunogen affinity purified
纯化说明	ab187689 was affinity purified using an epitope specific to Transaldolase 1 immobilized on solid support.
克隆	多克隆
同种型	IgG

应用

The Abpromise guarantee
Abpromise™承诺保证使用ab187689于以下的经测试应用

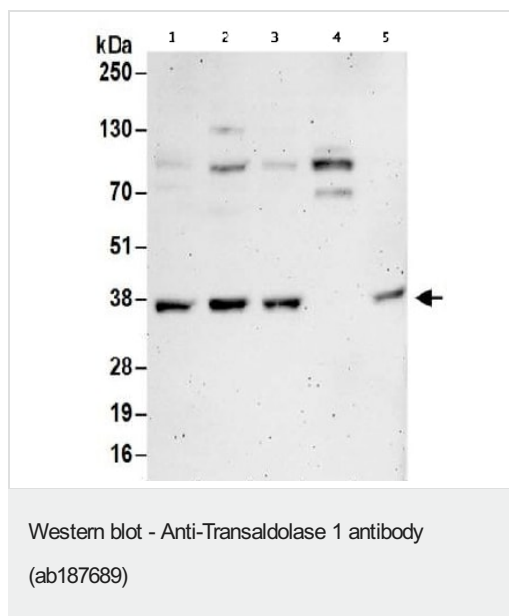
“应用说明”部分 下显示的仅为推荐的起始稀释度;实际最佳的稀释度/浓度应由使用者检定。

应用	Ab评论	说明
WB		1/2000 - 1/10000. Predicted molecular weight: 38 kDa.
IP		Use at 2-10 µg/mg of lysate.

靶标

功能	Transaldolase is important for the balance of metabolites in the pentose-phosphate pathway.
通路	Carbohydrate degradation; pentose phosphate pathway; D-glyceraldehyde 3-phosphate and beta-D-fructose 6-phosphate from D-ribose 5-phosphate and D-xylulose 5-phosphate (non-oxidative stage); step 2/3.
疾病相关	Defects in TALDO1 are the cause of transaldolase 1 deficiency (TALDO1 deficiency) [MIM:606003]. It results in telangiectases of the skin, hepatosplenomegaly, and enlarged clitoris.
序列相似性	Belongs to the transaldolase family. Type 1 subfamily.
细胞定位	Cytoplasm.

图片



All lanes : Anti-Transaldolase 1 antibody (ab187689) at 0.1 µg/ml

Lane 1 : HeLa whole cell lysate

Lane 2 : 293T whole cell lysate

Lane 3 : Jurkat whole cell lysate

Lane 4 : TCMK1 whole cell lysate

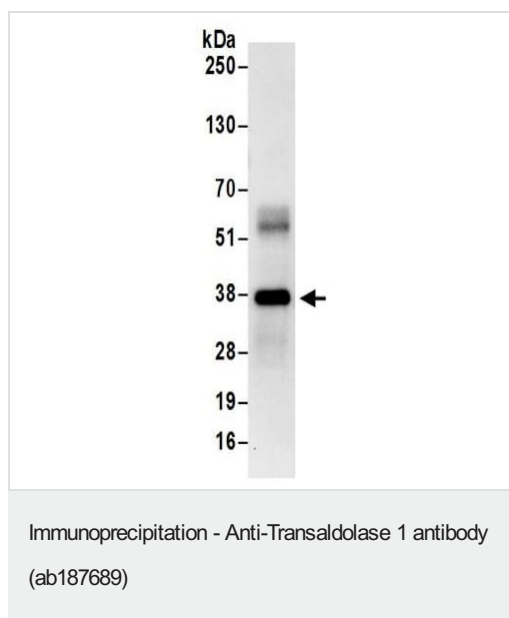
Lane 5 : NIH 3T3 whole cell lysate

Lysates/proteins at 50 µg per lane.

Developed using the ECL technique.

Predicted band size: 38 kDa

Exposure time: 3 minutes



Detection of Transaldolase 1 by Western Blot of Immunoprecipitate. ab187689 at 0.4µg/ml labeling Transaldolase 1 in HeLa whole cell lysate immunoprecipitated using ab187689 at 6µg/mg lysate (1 mg/IP; 20% of IP loaded/lane). Detection: Chemiluminescence with exposure time of 30 seconds.

Please note: All products are "FOR RESEARCH USE ONLY. NOT FOR USE IN DIAGNOSTIC PROCEDURES"

Our Abpromise to you: Quality guaranteed and expert technical support

- Replacement or refund for products not performing as stated on the datasheet
- Valid for 12 months from date of delivery
- Response to your inquiry within 24 hours
- We provide support in Chinese, English, French, German, Japanese and Spanish
- Extensive multi-media technical resources to help you
- We investigate all quality concerns to ensure our products perform to the highest standards

If the product does not perform as described on this datasheet, we will offer a refund or replacement. For full details of the Abpromise,

please visit <https://www.abcam.cn/abpromise> or contact our technical team.

Terms and conditions

- Guarantee only valid for products bought direct from Abcam or one of our authorized distributors