


# Anti-TRA2B/SFRS10 antibody ab31353

★★★★★ [1 Abreviews](#) [25 References](#) [3 图像](#)

### 概述

产品名称	Anti-TRA2B/SFRS10抗体
描述	兔多克隆抗体to TRA2B/SFRS10
宿主	Rabbit
经测试应用	适用于: IHC-P, WB, ICC/IF, CLIP
种属反应性	与反应: Mouse, Human 预测可用于: Rat, Chicken, Cow 
免疫原	Synthetic peptide. This information is proprietary to Abcam and/or its suppliers.
阳性对照	ICC/IF: HeLa
常规说明	<p>The Life Science industry has been in the grips of a reproducibility crisis for a number of years. Abcam is leading the way in addressing this with our range of recombinant monoclonal antibodies and knockout edited cell lines for gold-standard validation. Please check that this product meets your needs before purchasing.</p> <p>If you have any questions, special requirements or concerns, please send us an inquiry and/or contact our Support team ahead of purchase. Recommended alternatives for this product can be found below, along with publications, customer reviews and Q&amp;As</p>

### 性能

形式	Liquid
存放说明	Shipped at 4°C. Store at +4°C short term (1-2 weeks). Upon delivery aliquot. Store at -20°C or -80°C. Avoid freeze / thaw cycle.
存储溶液	<p>pH: 7.40</p> <p>Preservative: 0.02% Sodium azide</p> <p>Constituent: PBS</p> <p>Batches of this product that have a concentration &lt; 1mg/ml may have BSA added as a stabilising agent. If you would like information about the formulation of a specific lot, please contact our scientific support team who will be happy to help.</p>
纯度	Immunogen affinity purified
克隆	多克隆
同种型	IgG

## 应用

**The Abpromise guarantee**      **Abpromise™** 承诺保证使用 ab31353 于以下的经测试应用

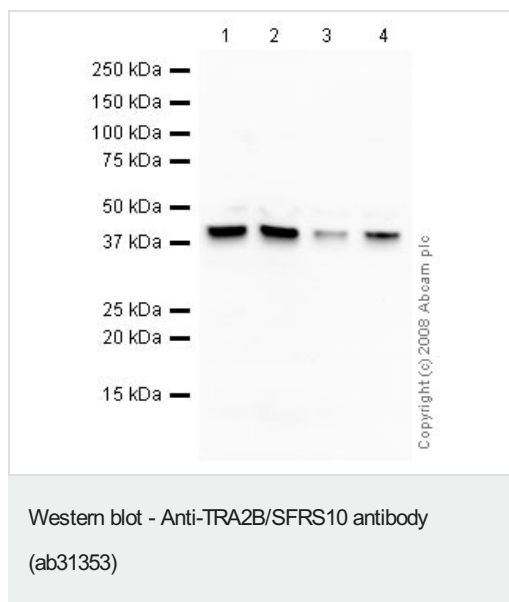
“应用说明”部分 下显示的仅为推荐的起始稀释度；实际最佳的稀释度/浓度应由使用者检定。

应用	Ab 评论	说明
IHC-P		Use at an assay dependent concentration.
WB	★★★★★ (1)	Use a concentration of 1 µg/ml. Detects a band of approximately 40 kDa (predicted molecular weight: 33 kDa). Although the predicted molecular mass of TRA2B/SFRS10 is ~33 kDa, the available literature describes TRA2B/SFRS10 running at ~40 kDa in SDS-PAGE
ICC/IF		Use a concentration of 1 µg/ml.
CLIP		Use at an assay dependent concentration. PubMed: 22194695

## 靶标

功能	Sequence-specific RNA-binding protein which participates in the control of pre-mRNA splicing.
组织特异性	Highest expression in heart, skeletal muscle and pancreas. Less abundant in kidney, placenta and brain. Lowest expression in kidney and liver.
序列相似性	Belongs to the splicing factor SR family. Contains 1 RRM (RNA recognition motif) domain.
翻译后修饰	Phosphorylated in the RS domains. Dimethylation at Arg-241 is probably asymmetric.
细胞定位	Nucleus.

## 图片



**All lanes :** Anti-TRA2B/SFRS10 antibody (ab31353) at 1 µg/ml

**Lane 1 :** HeLa (Human epithelial carcinoma cell line) Whole Cell Lysate

**Lane 2 :** Jurkat (Human T cell lymphoblast-like cell line) Whole Cell Lysate

**Lane 3 :** A431 (Human epithelial carcinoma cell line) Whole Cell Lysate

**Lane 4 :** HEK293 (Human embryonic kidney cell line) Whole Cell Lysate

Lysates/proteins at 10 µg per lane.

### Secondary

**All lanes :** Goat polyclonal to Rabbit IgG - H&L - Pre-Adsorbed (HRP) at 1/3000 dilution

Developed using the ECL technique.

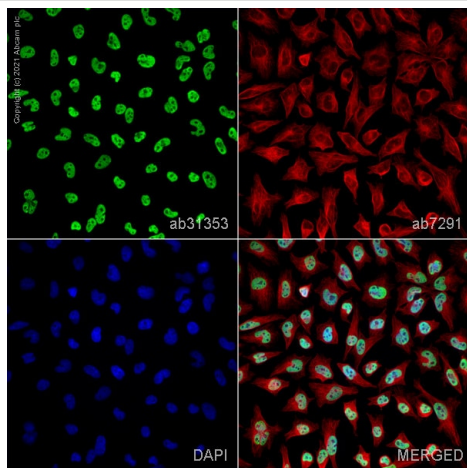
Performed under reducing conditions.

**Predicted band size:** 33 kDa

**Observed band size:** 40 kDa

**Exposure time:** 5 minutes

Although the predicted molecular mass of TRA2B/SFRS10 is ~33 kDa, the available literature describes TRA2B/SFRS10 running at ~40 kDa in SDS-PAGE.

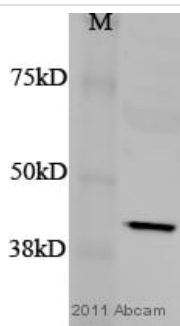


Immunocytochemistry/ Immunofluorescence - Anti-TRA2B/SFRS10 antibody (ab31353)

ab31353 staining TRA2B in HeLa cells. The cells were fixed with 4% paraformaldehyde (10 min), permeabilized with 0.1% PBS-Triton X-100 for 5 minutes and then blocked with 1% BSA/10% normal goat serum/0.3M glycine in 0.1%PBS-Tween for 1h. The cells were then incubated overnight at 4°C with ab31353 at 1µg/ml and **ab7291**, Mouse monoclonal [DM1A] to alpha Tubulin - Loading Control. Cells were then incubated with **ab150081**, Goat polyclonal Secondary Antibody to Rabbit IgG - H&L (Alexa Fluor® 488), pre-adsorbed at 1/1000 dilution (shown in green) and **ab150120**, Goat polyclonal Secondary Antibody to Mouse IgG - H&L (Alexa Fluor® 594), pre-adsorbed at 1/1000 dilution (shown in pseudocolour red). Nuclear DNA was labelled with DAPI (shown in blue).

Also suitable in cells fixed with 100% methanol (5 min).

Image was acquired with a high-content analyser (Operetta CLS, Perkin Elmer) and a maximum intensity projection of confocal sections is shown.



Western blot - Anti-TRA2B/SFRS10 antibody (ab31353)

This image is courtesy of an anonymous Abreview.

Anti-TRA2B/SFRS10 antibody (ab31353) at 1/100 dilution + NSC34 mouse cell lysate at 20 µg

#### Secondary

IRDYE® 800CW Donkey anti-Rabbit IgG at 1/3000 dilution

Developed using the ECL technique.

Performed under reducing conditions.

**Predicted band size:** 33 kDa

**Observed band size:** 42 kDa

**Exposure time:** 1 minute

**Please note:** All products are "FOR RESEARCH USE ONLY. NOT FOR USE IN DIAGNOSTIC PROCEDURES"

#### Our Abpromise to you: Quality guaranteed and expert technical support

- Replacement or refund for products not performing as stated on the datasheet
- Valid for 12 months from date of delivery
- Response to your inquiry within 24 hours
- We provide support in Chinese, English, French, German, Japanese and Spanish
- Extensive multi-media technical resources to help you

- We investigate all quality concerns to ensure our products perform to the highest standards

If the product does not perform as described on this datasheet, we will offer a refund or replacement. For full details of the Abpromise, please visit <https://www.abcam.cn/abpromise> or contact our technical team.

### **Terms and conditions**

---

- Guarantee only valid for products bought direct from Abcam or one of our authorized distributors