


### Anti-TPT1L + TCTP antibody [EPR13882(B)] ab182557

**重组** RabMAb

#### 5 图像

#### 概述

产品名称	Anti-TPT1L + TCTP抗体[EPR13882(B)]
描述	兔单克隆抗体[EPR13882(B)] to TPT1L + TCTP
宿主	Rabbit
经测试应用	<b>适用于:</b> Flow Cyt (Intra), IHC-P, WB, IP
种属反应性	<b>与反应:</b> Human <b>预测可用于:</b> Mouse, Rat 
免疫原	Synthetic peptide. This information is proprietary to Abcam and/or its suppliers.
阳性对照	Jurkat, 293 and HepG2 cell lysates; Human prostate tissue; Jurkat cells.
常规说明	This product is a recombinant monoclonal antibody, which offers several advantages including: <ul style="list-style-type: none"> <li>- High batch-to-batch consistency and reproducibility</li> <li>- Improved sensitivity and specificity</li> <li>- Long-term security of supply</li> <li>- Animal-free production</li> </ul> For more information <a href="#">see here</a> . Our RabMAb <sup>®</sup> technology is a patented hybridoma-based technology for making rabbit monoclonal antibodies. For details on our patents, please refer to <a href="#">RabMAb<sup>®</sup> patents</a> .

#### 性能

形式	Liquid
存放说明	Shipped at 4°C. Store at +4°C short term (1-2 weeks). Upon delivery aliquot. Store at -20°C long term. Avoid freeze / thaw cycle.
存储溶液	pH: 7.2 Preservative: 0.01% Sodium azide Constituents: 59% PBS, 40% Glycerol (glycerin, glycerine), 0.05% BSA
纯度	Protein A purified
克隆	单克隆
克隆编号	EPR13882(B)
同种型	IgG

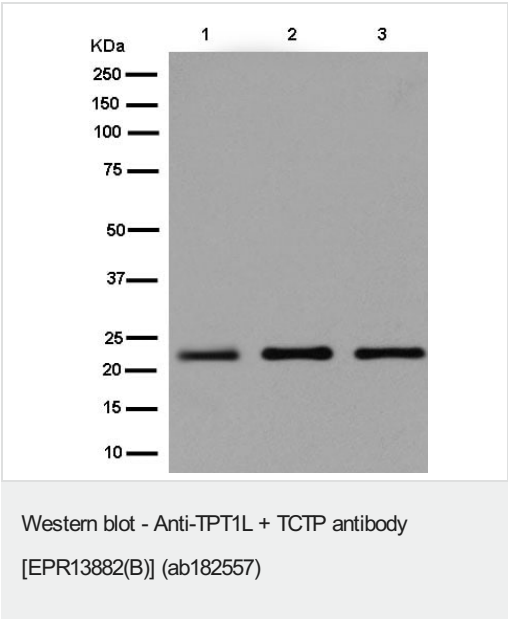
应用

**The Abpromise guarantee**      **Abpromise™**承诺保证使用ab182557于以下的经测试应用

“应用说明”部分 下显示的仅为推荐的起始稀释度;实际最佳的稀释度/浓度应由使用者检定。

应用	Ab评论	说明
Flow Cyt (Intra)		1/240. <b>ab172730</b> - Rabbit monoclonal IgG, is suitable for use as an isotype control with this antibody.
IHC-P		1/100. Perform heat mediated antigen retrieval with Tris/EDTA buffer pH 9.0 before commencing with IHC staining protocol.
WB		1/1000 - 1/2000. Detects a band of approximately 22 kDa (predicted molecular weight: 16, 20 kDa).
IP		1/40 - 1/60.

图片



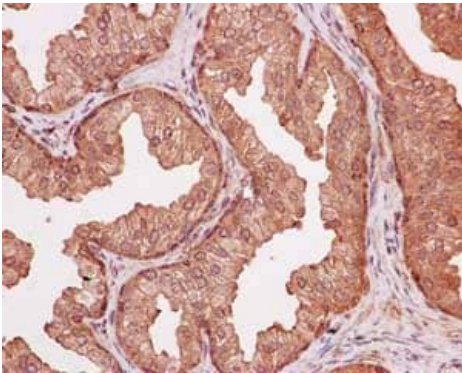
**All lanes :** Anti-TPT1L + TCTP antibody [EPR13882(B)] (ab182557) at 1/1000 dilution

**Lane 1 :** Jurkat cell lysate  
**Lane 2 :** 293 cell lysate  
**Lane 3 :** HepG2 cell lysate

Lysates/proteins at 20 µg per lane.

**Secondary**  
**All lanes :** Goat Anti-Rabbit IgG, (H+L), Peroxidase conjugated at 1/1000 dilution

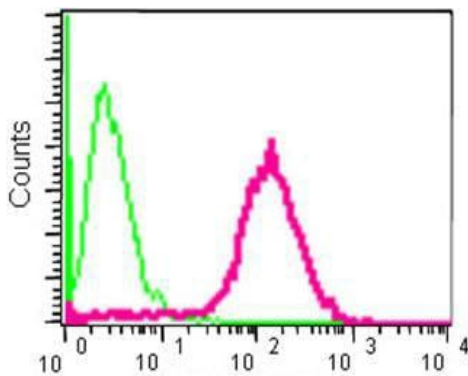
**Predicted band size:** 16, 20 kDa  
**Observed band size:** 22 kDa



Immunohistochemistry (Formalin/PFA-fixed paraffin-embedded sections) - Anti-TPT1L + TCTP antibody [EPR13882(B)] (ab182557)

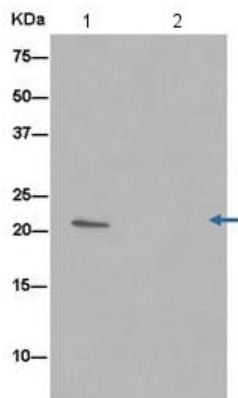
Immunohistochemical analysis of paraffin-embedded Human prostate tissue labeling FLJ44635 + TCTP with ab182557 at 1/100 dilution followed by prediluted HRP Polymer for Rabbit IgG. Counter stained with hematoxylin.

Perform heat mediated antigen retrieval with EDTA buffer pH 9 before commencing with IHC staining protocol.



Flow Cytometry (Intracellular) - Anti-TPT1L + TCTP antibody [EPR13882(B)] (ab182557)

Intracellular flow cytometric analysis of 2% paraformaldehyde-fixed Jurkat cells labeling FLJ44635 + TCTP with ab182557 at 1/240 dilution (red), compared to a Rabbit monoclonal IgG isotype control (green), followed by Goat anti rabbit IgG (FITC) secondary antibody at 1/150 dilution.



Immunoprecipitation - Anti-TPT1L + TCTP antibody  
[EPR13882(B)] (ab182557)

Western blot analysis on immunoprecipitation pellet from Jurkat cell lysate immunoprecipitated using ab182557 at 1/50 dilution (Lane 1). Lane 2: Negative control.

Secondary: Anti-Rabbit IgG (HRP), specific to the non-reduced form of IgG at 1/1500 dilution.

### Why choose a recombinant antibody?



**Research with confidence**  
Consistent and reproducible results



**Long-term and scalable supply**  
Recombinant technology



**Success from the first experiment**  
Confirmed specificity



**Ethical standards compliant**  
Animal-free production

Anti-TPT1L + TCTP antibody [EPR13882(B)]  
(ab182557)

**Please note:** All products are "FOR RESEARCH USE ONLY. NOT FOR USE IN DIAGNOSTIC PROCEDURES"

### Our Abpromise to you: Quality guaranteed and expert technical support

- Replacement or refund for products not performing as stated on the datasheet
- Valid for 12 months from date of delivery
- Response to your inquiry within 24 hours
- We provide support in Chinese, English, French, German, Japanese and Spanish
- Extensive multi-media technical resources to help you
- We investigate all quality concerns to ensure our products perform to the highest standards

If the product does not perform as described on this datasheet, we will offer a refund or replacement. For full details of the Abpromise, please visit <https://www.abcam.cn/abpromise> or contact our technical team.

### Terms and conditions

- Guarantee only valid for products bought direct from Abcam or one of our authorized distributors