

### Anti-TPP1 antibody [3B1] ab54685

★★★★★ [1 Abreviews](#) [13 References](#) [3 图像](#)

#### 概述

产品名称	Anti-TPP1抗体[3B1]
描述	小鼠单克隆抗体[3B1] to TPP1
宿主	Mouse
特异性	This product detects Tripeptidyl-peptidase 1 (TPP1). It is unable to detect Adrenocortical dysplasia protein homolog which is also known as TPP1.
经测试应用	<b>适用于:</b> WB, IHC-P, Flow Cyt
种属反应性	<b>与反应:</b> Human
免疫原	Recombinant fragment within Human TPP1 aa 195-305. The exact sequence is proprietary. Database link: <a href="#">O14773</a>
阳性对照	IHC-P: Human salivary gland tissue. WB: A431 cell lysate. Flow Cyt: JEG3 cells.
常规说明	<p>This product was changed from ascites to tissue culture supernatant on 24/1/19. Please note that the dilutions may need to be adjusted accordingly. If you have any questions, please do not hesitate to contact our scientific support team.</p> <p>The Life Science industry has been in the grips of a reproducibility crisis for a number of years. Abcam is leading the way in addressing this with our range of recombinant monoclonal antibodies and knockout edited cell lines for gold-standard validation. Please check that this product meets your needs before purchasing.</p> <p>If you have any questions, special requirements or concerns, please send us an inquiry and/or contact our Support team ahead of purchase. Recommended alternatives for this product can be found below, along with publications, customer reviews and Q&amp;As</p>

#### 性能

形式	Liquid
存放说明	Shipped at 4°C. Upon delivery aliquot and store at -20°C or -80°C. Avoid repeated freeze / thaw cycles.
存储溶液	pH: 7.4
纯度	Tissue culture supernatant
纯化说明	Purified from TCS.
克隆	单克隆

克隆编号	3B1
同种型	IgG1
轻链类型	kappa

应用

The Abpromise guarantee      **Abpromise™**承诺保证使用ab54685于以下的经测试应用

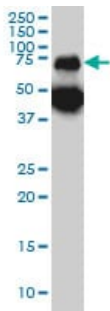
“应用说明”部分 下显示的仅为推荐的起始稀释度;实际最佳的稀释度/浓度应由使用者检定。

应用	Ab评论	说明
WB	★★★★★ (1)	Use at an assay dependent concentration. Predicted molecular weight: 61 kDa.
IHC-P		Use at an assay dependent concentration.
Flow Cyt		Use at an assay dependent concentration. <b>ab170190</b> - Mouse monoclonal IgG1, is suitable for use as an isotype control with this antibody.

靶标

功能	Lysosomal serine protease with tripeptidyl-peptidase I activity. May act as a non-specific lysosomal peptidase which generates tripeptides from the breakdown products produced by lysosomal proteinases. Requires substrates with an unsubstituted N-terminus.
组织特异性	Detected in all tissues examined with highest levels in heart and placenta and relatively similar levels in other tissues.
疾病相关	Defects in TPP1 are the cause of neuronal ceroid lipofuscinosis type 2 (CLN2) [MIM:204500]. A form of neuronal ceroid lipofuscinosis. Neuronal ceroid lipofuscinoses are progressive neurodegenerative, lysosomal storage diseases characterized by intracellular accumulation of autofluorescent liposomal material, and clinically by seizures, dementia, visual loss, and/or cerebral atrophy. The lipopigment pattern seen most often in CLN2 consists of curvilinear profiles.
序列相似性	Belongs to the peptidase S53 family.
翻译后修饰	Activated by autocatalytic proteolytical processing upon acidification. N-glycosylation is required for processing and activity.
细胞定位	Lysosome. Melanosome. Identified by mass spectrometry in melanosome fractions from stage I to stage IV.

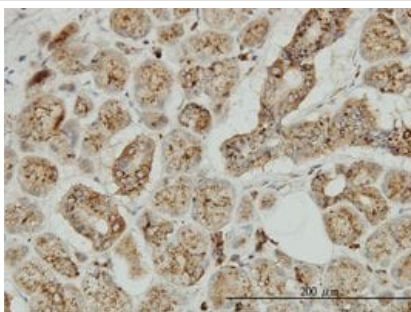
图片



Western blot - Anti-TPP1 antibody [3B1] (ab54685)

TPP1 antibody (ab54685) at 1ug/lane + A-431 cell lysate at 25ug/lane.

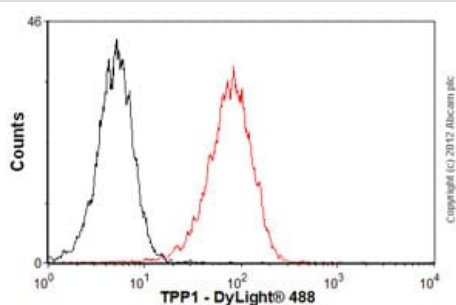
**This image was generated using the ascites version of the product.**



Immunohistochemistry (Formalin/PFA-fixed paraffin-embedded sections) - Anti-TPP1 antibody [3B1] (ab54685)

TPP1 antibody (ab54685) used in immunohistochemistry at 3ug/ml on formalin fixed and paraffin embedded human salivary gland.

**This image was generated using the ascites version of the product.**



Flow Cytometry - Anti-TPP1 antibody [3B1] (ab54685)

Overlay histogram showing JEG3 cells stained with ab54685 (red line). The cells were fixed with 80% methanol (5 min) and then permeabilized with 0.1% PBS-Tween for 20 min. The cells were then incubated in 1x PBS / 10% normal goat serum / 0.3M glycine to block non-specific protein-protein interactions. The cells were then incubated with the antibody (ab54685, 2μg/1x10<sup>6</sup> cells) for 30 min at 22°C. The secondary antibody used was DyLight® 488 goat anti-mouse IgG (H+L) ([ab96879](#)) at 1/500 dilution for 30 min at 22°C. Isotype control antibody (black line) was mouse IgG1 [ICIGG1] ([ab91353](#), 2μg/1x10<sup>6</sup> cells) used under the same conditions. Acquisition of >5,000 events was performed.

**This image was generated using the ascites version of the product.**

### **Our Abpromise to you: Quality guaranteed and expert technical support**

---

- Replacement or refund for products not performing as stated on the datasheet
- Valid for 12 months from date of delivery
- Response to your inquiry within 24 hours
  
- We provide support in Chinese, English, French, German, Japanese and Spanish
- Extensive multi-media technical resources to help you
- We investigate all quality concerns to ensure our products perform to the highest standards

If the product does not perform as described on this datasheet, we will offer a refund or replacement. For full details of the Abpromise, please visit <https://www.abcam.cn/abpromise> or contact our technical team.

### **Terms and conditions**

---

- Guarantee only valid for products bought direct from Abcam or one of our authorized distributors