

### Anti-Topoisomerase II beta/TOP2B antibody ab72334

★★★★★ [1 Abreviews](#) [9 References](#) [4 图像](#)

#### 概述

产品名称	Anti-Topoisomerase II beta/TOP2B抗体
描述	兔多克隆抗体to Topoisomerase II beta/TOP2B
宿主	Rabbit
经测试应用	适用于: WB, IP, IHC-P
种属反应性	与反应: Human 预测可用于: Chimpanzee, Gorilla 
免疫原	Synthetic peptide. This information is proprietary to Abcam and/or its suppliers.
阳性对照	Whole cell lysate from Hela and 293T cells.
常规说明	<p>The Life Science industry has been in the grips of a reproducibility crisis for a number of years. Abcam is leading the way in addressing this with our range of recombinant monoclonal antibodies and knockout edited cell lines for gold-standard validation. Please check that this product meets your needs before purchasing.</p> <p>If you have any questions, special requirements or concerns, please send us an inquiry and/or contact our Support team ahead of purchase. Recommended alternatives for this product can be found below, along with publications, customer reviews and Q&amp;As</p>

#### 性能

形式	Liquid
存放说明	Shipped at 4°C. Upon delivery aliquot and store at -20°C. Avoid freeze / thaw cycles.
存储溶液	pH: 6.8 Preservative: 0.09% Sodium azide Constituents: 1% BSA, Tris buffered saline
纯度	Immunogen affinity purified
克隆	多克隆
同种型	IgG

#### 应用

The Abpromise guarantee

**Abpromise™** 承诺保证使用ab72334于以下的经测试应用

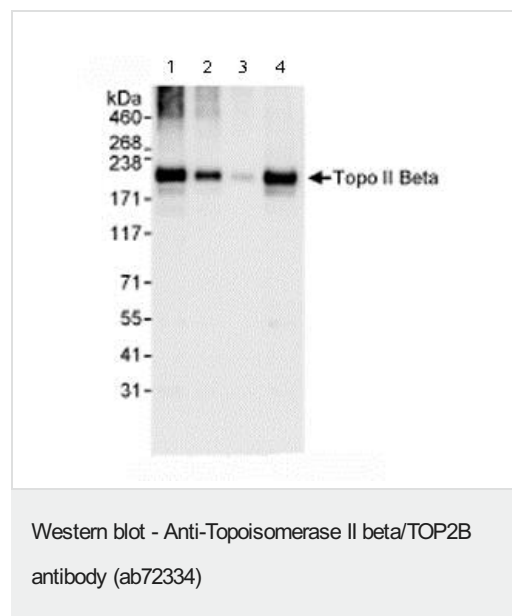
“应用说明”部分 下显示的仅为推荐的起始稀释度;实际最佳的稀释度/浓度应由使用者检定。

应用	Ab评论	说明
WB		1/2000 - 1/10000. Detects a band of approximately 210 kDa (predicted molecular weight: 183 kDa).
IP		Use at 2-5 µg/mg of lysate.
IHC-P		Use a concentration of 1 µg/ml. Perform heat mediated antigen retrieval with citrate buffer pH 6 before commencing with IHC staining protocol.

## 靶标

功能	Control of topological states of DNA by transient breakage and subsequent rejoining of DNA strands. Topoisomerase II makes double-strand breaks. Indirectly involved in vitamin D-coupled transcription regulation via its association with the WINAC complex, a chromatin-remodeling complex recruited by vitamin D receptor (VDR), which is required for the ligand-bound VDR-mediated transrepression of the CYP27B1 gene.
序列相似性	Belongs to the type II topoisomerase family.
翻译后修饰	Phosphorylated upon DNA damage, probably by ATM or ATR.
细胞定位	Cytoplasm. Nucleus > nucleolus.

## 图片



**All lanes :** Anti-Topoisomerase II beta/TOP2B antibody (ab72334)  
at 0.04 µg/ml

**Lane 1 :** Whole cell lysate from Hela cells at 50 µg

**Lane 2 :** Whole cell lysate from Hela cells at 15 µg

**Lane 3 :** Whole cell lysate from Hela cells at 5 µg

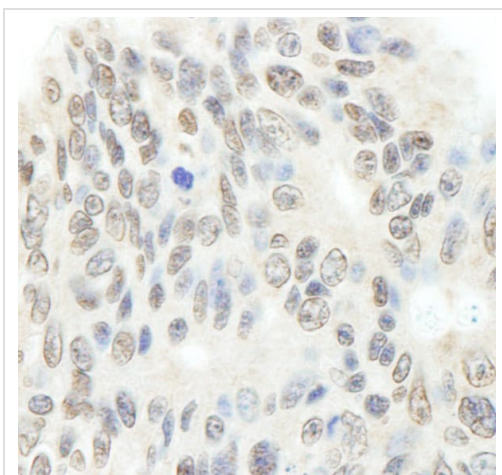
**Lane 4 :** Whole cell lysate from 293T cells at 50 µg

Developed using the ECL technique.

**Predicted band size:** 183 kDa

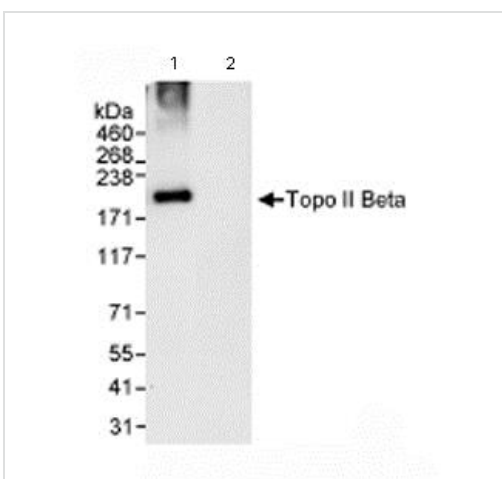
**Observed band size:** 210 kDa

**Exposure time:** 30 seconds



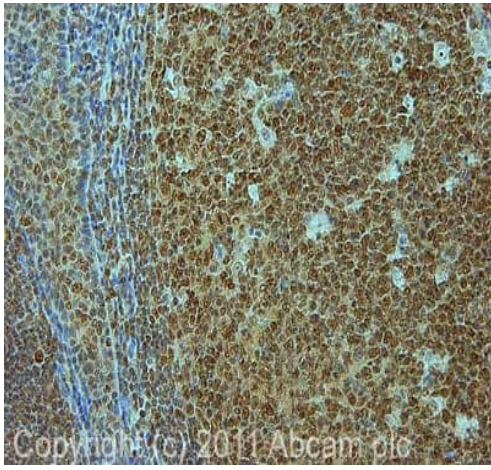
Immunohistochemistry (Formalin/PFA-fixed paraffin-embedded sections) - Anti-Topoisomerase II beta/Topo2B antibody (ab72334)

Immunohistochemistry (Formalin/PFA-fixed paraffin-embedded sections) analysis of human ovarian carcinoma tissue labelling Topoisomerase II beta/Topo2B with ab72334 at 1/200 (1 µg/ml). Detection: DAB.



Immunoprecipitation - Anti-Topoisomerase II beta/Topo2B antibody (ab72334)

Immunoprecipitation/ Western Blot of Topoisomerase II beta/Topo2B. Lane 1: ab72334 at 3 µg/mg whole cell lysate. Lane 2: Control IgG. ab72334 at 0.1 µg/ml for WB. Whole cell lysate from HeLa cells at 1 mg for IP, 20% of IP loaded. Chemiluminescence with an exposure time of 30 seconds.



Immunohistochemistry (Formalin/PFA-fixed paraffin-embedded sections) - Anti-Topoisomerase II beta/TOP2B antibody (ab72334)

IHC image of ab72334 staining in human normal tonsil formalin fixed paraffin embedded tissue section, performed on a Leica Bond™ system using the standard protocol F. The section was pre-treated using heat mediated antigen retrieval with sodium citrate buffer (pH6, epitope retrieval solution 1) for 20 mins. The section was then incubated with ab72334, 1µg/ml, for 15 mins at room temperature and detected using an HRP conjugated compact polymer system. DAB was used as the chromogen. The section was then counterstained with haematoxylin and mounted with DPX.

For other IHC staining systems (automated and non-automated) customers should optimize variable parameters such as antigen retrieval conditions, primary antibody concentration and antibody incubation times.

**Please note:** All products are "FOR RESEARCH USE ONLY. NOT FOR USE IN DIAGNOSTIC PROCEDURES"

### Our Abpromise to you: Quality guaranteed and expert technical support

- Replacement or refund for products not performing as stated on the datasheet
- Valid for 12 months from date of delivery
- Response to your inquiry within 24 hours
- We provide support in Chinese, English, French, German, Japanese and Spanish
- Extensive multi-media technical resources to help you
- We investigate all quality concerns to ensure our products perform to the highest standards

If the product does not perform as described on this datasheet, we will offer a refund or replacement. For full details of the Abpromise, please visit <https://www.abcam.cn/abpromise> or contact our technical team.

### Terms and conditions

- Guarantee only valid for products bought direct from Abcam or one of our authorized distributors