

Anti-TOMM20 antibody [EPR15581-54] - Mitochondrial Marker ab186735

重组 RabMAb

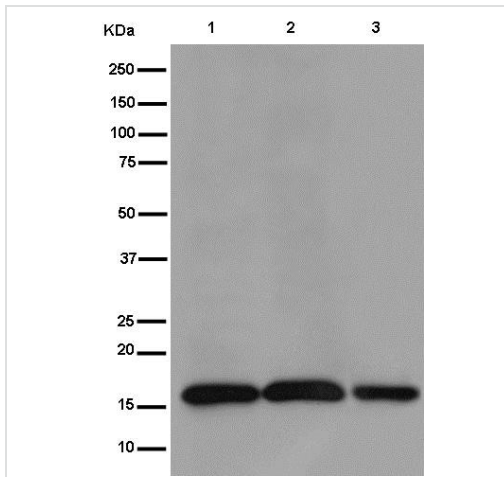
★★★★★ **8 Abreviews** **115 References** [12 图像](#)

概述

产品名称	Anti-TOMM20抗体[EPR15581-54] - Mitochondrial Marker
描述	兔单克隆抗体[EPR15581-54] to TOMM20 - Mitochondrial Marker
宿主	Rabbit
经测试应用	适用于: Flow Cyt (Intra), ICC/IF, WB, IHC-P, IHC-Fr
种属反应性	与反应: Mouse, Rat, Human
免疫原	Recombinant fragment. This information is proprietary to Abcam and/or its suppliers.
阳性对照	WB: HepG2, HeLa, SH-SY5Y, PC-12 and NIH 3T3 cell lysates; IHC-P: Human ovarian carcinoma and mouse cardiac muscle tissues; ICC/IF: HeLa cells; Flow Cyt (intra): HeLa cells; IHC-Fr: Mouse cardiac and small intestine tissues.
常规说明	<p>This product is a recombinant monoclonal antibody, which offers several advantages including:</p> <ul style="list-style-type: none"> - High batch-to-batch consistency and reproducibility - Improved sensitivity and specificity - Long-term security of supply - Animal-free production <p>For more information see here.</p> <p>Our RabMAb[®] technology is a patented hybridoma-based technology for making rabbit monoclonal antibodies. For details on our patents, please refer to RabMAb[®] patents.</p>

性能

形式	Liquid
存放说明	Shipped at 4°C. Store at +4°C short term (1-2 weeks). Upon delivery aliquot. Store at -20°C long term. Avoid freeze / thaw cycle.
存储溶液	pH: 7.2 Preservative: 0.01% Sodium azide Constituents: PBS, 40% Glycerol (glycerin, glycerine), 0.05% BSA
纯度	Protein A purified
克隆	单克隆



Western blot - Anti-TOMM20 antibody [EPR15581-54] - Mitochondrial Marker (ab186735)

All lanes : Anti-TOMM20 antibody [EPR15581-54] - Mitochondrial Marker (ab186735) at 1/10000 dilution

Lane 1 : HepG2 (human liver hepatocellular carcinoma cell line) cell lysate

Lane 2 : HeLa (human epithelial cell line from cervix adenocarcinoma) cell lysate

Lane 3 : SH-SY5Y (human neuroblastoma cell line from bone marrow) cell lysate

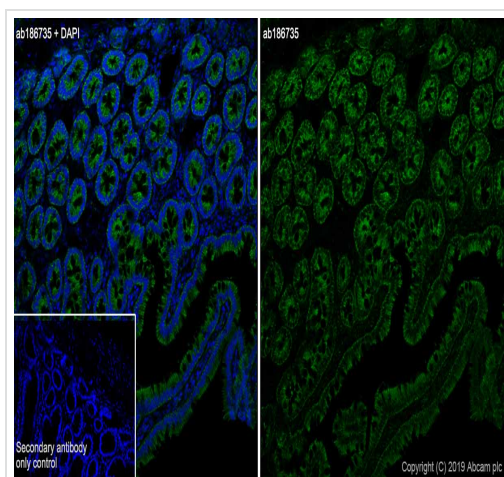
Lysates/proteins at 20 µg per lane.

Secondary

All lanes : Goat Anti-Rabbit IgG, (H+L), Peroxidase conjugate at 1/1000 dilution

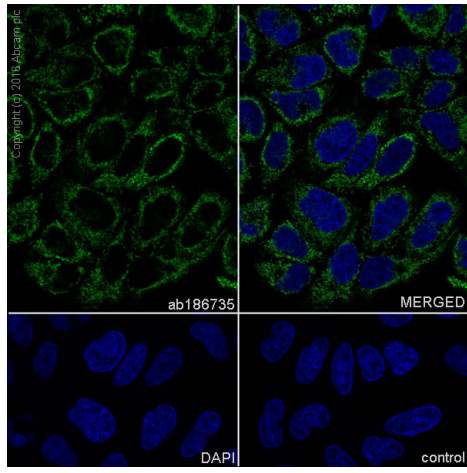
Predicted band size: 16 kDa

Observed band size: 16 kDa



Immunohistochemistry (Frozen sections) - Anti-TOMM20 antibody [EPR15581-54] - Mitochondrial Marker (ab186735)

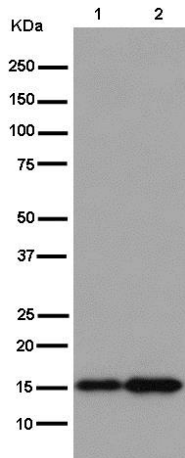
Immunohistochemistry (Frozen sections) analysis of rat small intestine tissue sections labeling TOMM20 with Purified ab186735 at 1/50 (1.9 µg/ml). Heat mediated antigen retrieval using sodium citrate buffer (10mM citrate pH 6.0 + 0.05% Tween-20). Goat anti rabbit IgG (Alexa Fluor® 488, **ab150077**) was used as the secondary antibody. Negative control: PBS instead of the primary antibody. DAPI was used as a counterstain.



Immunocytochemistry/ Immunofluorescence - Anti-TOMM20 antibody [EPR15581-54] - Mitochondrial Marker (ab186735)

ab186735 staining TOMM20 in HeLa (human epithelial cell line from cervix adenocarcinoma) cells by ICC/IF (Immunocytochemistry/immunofluorescence). Cells were fixed with 4% Paraformaldehyde and permeabilized with 0.1% Triton X-100. Samples were incubated with primary antibody at a dilution of 1/500. A goat anti rabbit IgG (Alexa Fluor® 488) (**ab150077**) was used as the secondary antibody at a dilution of 1/1000. DAPI was used as a nuclear counterstain.

Control: PBS only



Western blot - Anti-TOMM20 antibody [EPR15581-54] - Mitochondrial Marker (ab186735)

All lanes : Anti-TOMM20 antibody [EPR15581-54] - Mitochondrial Marker (ab186735) at 1/2000 dilution

Lane 1 : PC-12 (rat adrenal gland pheochromocytoma cell line) cell lysate

Lane 2 : NIH/3T3 (mouse embryo fibroblast cell line) cell lysate

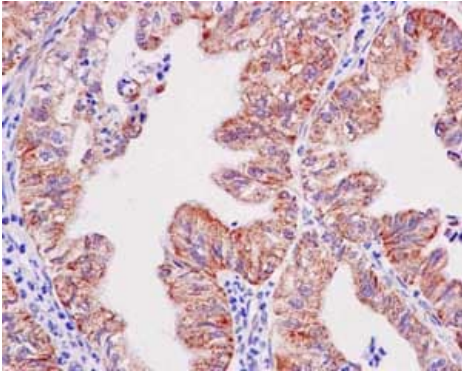
Lysates/proteins at 10 µg per lane.

Secondary

All lanes : Goat Anti-Rabbit IgG, (H+L), Peroxidase conjugate at 1/1000 dilution

Predicted band size: 16 kDa

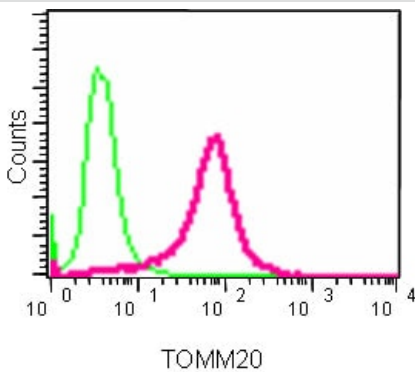
Observed band size: 16 kDa



Immunohistochemistry (Formalin/PFA-fixed paraffin-embedded sections) - Anti-TOMM20 antibody [EPR15581-54] - Mitochondrial Marker (ab186735)

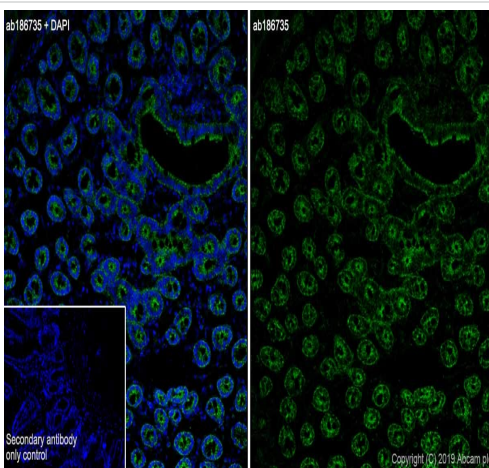
Immunohistochemical analysis of paraffin-embedded Human ovarian carcinoma tissue labeling TOMM20 with ab186735 at 1/100 dilution followed by prediluted HRP Polymer for Rabbit IgG. Counter stained with Hematoxylin.

Perform heat mediated antigen retrieval with EDTA buffer pH 9 before commencing with IHC staining protocol.



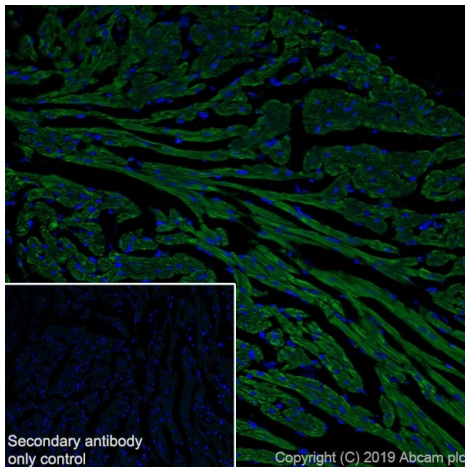
Flow Cytometry (Intracellular) - Anti-TOMM20 antibody [EPR15581-54] - Mitochondrial Marker (ab186735)

Intracellular Flow Cytometry analysis of TOMM20 expression in paraformaldehyde-fixed HeLa (human epithelial cell line from cervix adenocarcinoma) cells cells using ab186735 at 1/90 dilution (red) and a rabbit IgG as negative control (green).



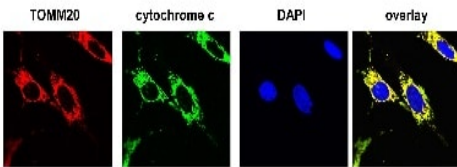
Immunohistochemistry (Frozen sections) - Anti-TOMM20 antibody [EPR15581-54] - Mitochondrial Marker (ab186735)

Immunohistochemistry (Frozen sections) analysis of mouse small intestine tissue sections labeling TOMM20 with Purified ab186735 at 1/50 (1.9 µg/ml). Heat mediated antigen retrieval using sodium citrate buffer (10mM citrate pH 6.0 + 0.05% Tween-20). Goat anti rabbit IgG (Alexa Fluor® 488, [ab150077](#)) was used as the secondary antibody. Negative control: PBS instead of the primary antibody. DAPI was used as a counterstain.



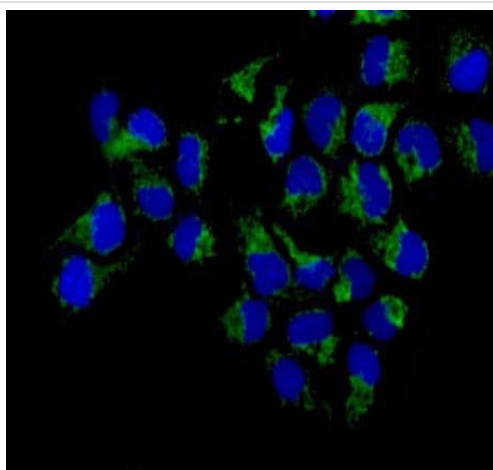
Immunohistochemistry (Frozen sections) - Anti-TOMM20 antibody [EPR15581-54] - Mitochondrial Marker (ab186735)

Immunohistochemistry (Frozen sections) analysis of mouse cardiac muscle tissue sections labeling TOMM20 with Purified ab186735 at 1/50 (1.9 µg/ml). Heat mediated antigen retrieval using sodium citrate buffer (10mM citrate pH 6.0 + 0.05% Tween-20). Goat anti rabbit IgG (Alexa Fluor® 488, **ab150077**) was used as the secondary antibody. Negative control: PBS instead of the primary antibody. DAPI was used as a counterstain.



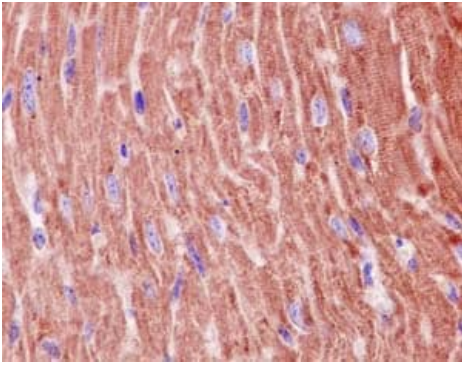
Immunocytochemistry/ Immunofluorescence - Anti-TOMM20 antibody [EPR15581-54] - Mitochondrial Marker (ab186735)

Paraformaldehyde-fixed, 0.2% Triton X-100 permeabilized human non-small cell lung carcinoma cells labeling TOMM20 using ab186735 at 1/400 dilution for 3 hours at room temperature. A Goat anti-Rabbit IgG (H&L) AlexaFluor® was used as secondary antibody at 1/1000 dilution.



Immunocytochemistry/ Immunofluorescence - Anti-TOMM20 antibody [EPR15581-54] - Mitochondrial Marker (ab186735)

Immunofluorescence analysis of paraformaldehyde-fixed HeLa (human epithelial cell line from cervix adenocarcinoma) cells, labeling TOMM20 (green) with ab186735 at 1/250 dilution. Alexa Fluor®488-conjugated goat anti-rabbit IgG was used as a secondary antibody at 1/200 dilution. Nuclei were counterstained with DAPI (blue).



Immunohistochemical analysis of paraffin-embedded mouse cardiac muscle tissue labeling TOMM20 with ab186735 at 1/100 dilution followed by prediluted HRP Polymer for Rabbit IgG. Counter stained with Hematoxylin.

Perform heat mediated antigen retrieval with EDTA buffer pH 9 before commencing with IHC staining protocol.

Immunohistochemistry (Formalin/PFA-fixed paraffin-embedded sections) - Anti-TOMM20 antibody [EPR15581-54] - Mitochondrial Marker (ab186735)

Why choose a recombinant antibody?



Anti-TOMM20 antibody [EPR15581-54] - Mitochondrial Marker (ab186735)

Please note: All products are "FOR RESEARCH USE ONLY. NOT FOR USE IN DIAGNOSTIC PROCEDURES"

Our Abpromise to you: Quality guaranteed and expert technical support

- Replacement or refund for products not performing as stated on the datasheet
- Valid for 12 months from date of delivery
- Response to your inquiry within 24 hours
- We provide support in Chinese, English, French, German, Japanese and Spanish
- Extensive multi-media technical resources to help you
- We investigate all quality concerns to ensure our products perform to the highest standards

If the product does not perform as described on this datasheet, we will offer a refund or replacement. For full details of the Abpromise, please visit <https://www.abcam.cn/abpromise> or contact our technical team.

Terms and conditions

- Guarantee only valid for products bought direct from Abcam or one of our authorized distributors