

Anti-TOMM20 antibody [EPR15581-39] - BSA and Azide free
ab220822

重组 RabMAb

3 References 5 图像

概述

产品名称	Anti-TOMM20抗体[EPR15581-39] - BSA and Azide free
描述	兔单克隆抗体[EPR15581-39] to TOMM20 - BSA and Azide free
宿主	Rabbit
经测试应用	适用于: Flow Cyt (Intra), WB, IHC-P, ICC/IF
种属反应性	与反应: Mouse, Rat, Human
免疫原	Recombinant fragment. This information is proprietary to Abcam and/or its suppliers.
阳性对照	HepG2 and HeLa whole cell lysate (ab150035); Human endometrial adenocarcinoma and mouse cardiac muscle tissues; HeLa and NCI-H2228 cells.
常规说明	<p>ab220822 is the carrier-free version of ab186734.</p> <p>Our carrier-free antibodies are typically supplied in a PBS-only formulation, purified and free of BSA, sodium azide and glycerol. The carrier-free buffer and high concentration allow for increased conjugation efficiency.</p> <p>This conjugation-ready format is designed for use with fluorochromes, metal isotopes, oligonucleotides, and enzymes, which makes them ideal for antibody labelling, functional and cell-based assays, flow-based assays (e.g. mass cytometry) and Multiplex Imaging applications.</p> <p>Use our conjugation kits for antibody conjugates that are ready-to-use in as little as 20 minutes with <1 minute hands-on-time and 100% antibody recovery: available for fluorescent dyes, HRP, biotin and gold.</p> <p>This product is compatible with the Maxpar[®] Antibody Labeling Kit from Fluidigm, without the need for antibody preparation. Maxpar[®] is a trademark of Fluidigm Canada Inc.</p> <p>Our RabMAb[®] technology is a patented hybridoma-based technology for making rabbit monoclonal antibodies. For details on our patents, please refer to RabMAb[®] patents.</p>

性能

形式	Liquid
存放说明	Shipped at 4°C. Store at +4°C. Do Not Freeze.

存储溶液	pH: 7.2 Constituent: PBS
无载体	是
纯度	Protein A purified
克隆	单克隆
克隆编号	EPR15581-39
同种型	IgG

应用

The Abpromise guarantee **Abpromise™**承诺保证使用ab220822于以下的经测试应用

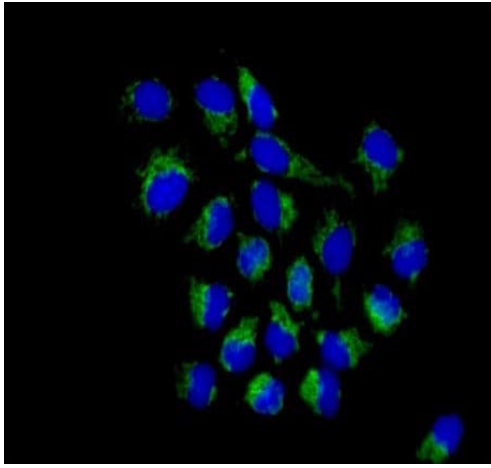
“应用说明”部分 下显示的仅为推荐的起始稀释度;实际最佳的稀释度/浓度应由使用者检定。

应用	Ab评论	说明
Flow Cyt (Intra)		Use at an assay dependent concentration. ab199376 - Rabbit monoclonal IgG, is suitable for use as an isotype control with this antibody.
WB		Use at an assay dependent concentration. Detects a band of approximately 16 kDa (predicted molecular weight: 16 kDa).
IHC-P		Use at an assay dependent concentration. Perform heat mediated antigen retrieval with Tris/EDTA buffer pH 9.0 before commencing with IHC staining protocol.
ICC/IF		Use at an assay dependent concentration.

靶标

功能	Central component of the receptor complex responsible for the recognition and translocation of cytosolically synthesized mitochondrial preproteins. Together with TOM22 functions as the transit peptide receptor at the surface of the mitochondrion outer membrane and facilitates the movement of preproteins into the TOM40 translocation pore.
序列相似性	Belongs to the Tom20 family.
细胞定位	Mitochondrion outer membrane.

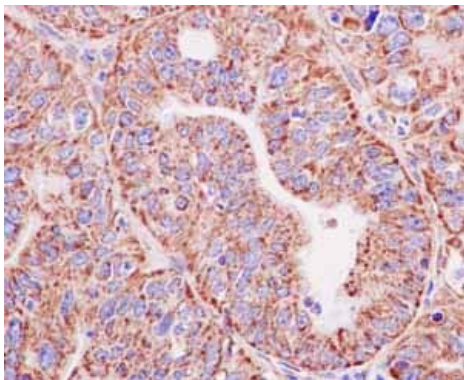
图片



Immunocytochemistry/ Immunofluorescence - Anti-TOMM20 antibody [EPR15581-39] - BSA and Azide free (ab220822)

Immunofluorescence analysis of paraformaldehyde-fixed HeLa cells, labeling TOMM20 (green) with **ab186734** at 1/250 dilution. Alexa Fluor®488-conjugated goat anti-rabbit IgG was used as a secondary antibody at 1/200 dilution. Nuclei were counterstained with DAPI (blue).

This data was developed using the same antibody clone in a different buffer formulation containing PBS, BSA, glycerol, and sodium azide (**ab186734**).

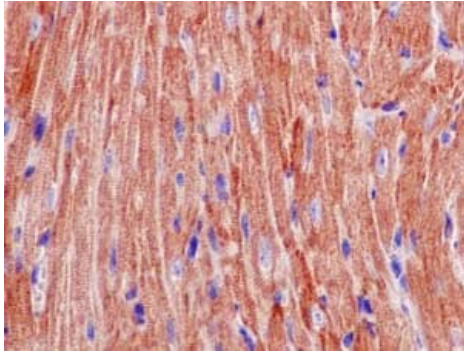


Immunohistochemistry (Formalin/PFA-fixed paraffin-embedded sections) - Anti-TOMM20 antibody [EPR15581-39] - BSA and Azide free (ab220822)

Immunohistochemical analysis of paraffin-embedded Human endometrial adenocarcinoma tissue, labeling TOMM20 with **ab186734** at 1/100 dilution. Detected using HRP Polymer for Rabbit IgG and counter-stained using hematoxylin.

This data was developed using the same antibody clone in a different buffer formulation containing PBS, BSA, glycerol, and sodium azide (**ab186734**).

Perform heat mediated antigen retrieval with EDTA buffer pH 9 before commencing with IHC staining protocol.

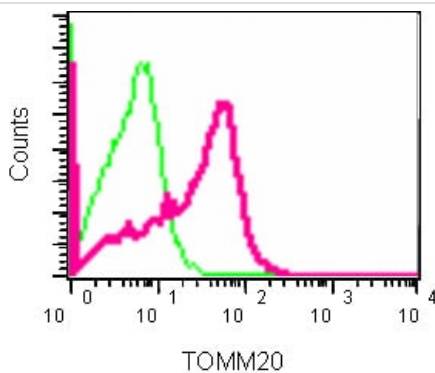


Immunohistochemistry (Formalin/PFA-fixed paraffin-embedded sections) - Anti-TOMM20 antibody [EPR15581-39] - BSA and Azide free (ab220822)

Immunohistochemical analysis of paraffin-embedded mouse cardiac muscle tissue, labeling TOMM20 with **ab186734** at 1/100 dilution. Detected using HRP Polymer for Rabbit IgG and counter-stained using hematoxylin.

This data was developed using the same antibody clone in a different buffer formulation containing PBS, BSA, glycerol, and sodium azide (**ab186734**).

Perform heat mediated antigen retrieval with EDTA buffer pH 9 before commencing with IHC staining protocol.

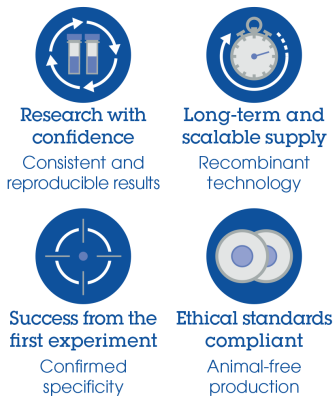


Flow Cytometry (Intracellular) - Anti-TOMM20 antibody [EPR15581-39] - BSA and Azide free (ab220822)

Intracellular Flow Cytometry analysis of TOMM20 expression in NCI-H2228 cells using **ab186734** at 1/40 dilution (red) and a rabbit IgG as negative control (green).

This data was developed using the same antibody clone in a different buffer formulation containing PBS, BSA, glycerol, and sodium azide (**ab186734**).

Why choose a recombinant antibody?



Anti-TOMM20 antibody [EPR15581-39] - BSA and Azide free (ab220822)

Please note: All products are "FOR RESEARCH USE ONLY. NOT FOR USE IN DIAGNOSTIC PROCEDURES"

Our Abpromise to you: Quality guaranteed and expert technical support

- Replacement or refund for products not performing as stated on the datasheet
- Valid for 12 months from date of delivery
- Response to your inquiry within 24 hours

- We provide support in Chinese, English, French, German, Japanese and Spanish
- Extensive multi-media technical resources to help you
- We investigate all quality concerns to ensure our products perform to the highest standards

If the product does not perform as described on this datasheet, we will offer a refund or replacement. For full details of the Abpromise, please visit <https://www.abcam.cn/abpromise> or contact our technical team.

Terms and conditions

- Guarantee only valid for products bought direct from Abcam or one of our authorized distributors