


Anti-TOM1 antibody ab99356

[3 References](#) [2 图像](#)

概述

产品名称	Anti-TOM1抗体
描述	兔多克隆抗体to TOM1
宿主	Rabbit
经测试应用	适用于: WB, IP
种属反应性	与反应: Human 预测可用于: Chimpanzee 
免疫原	Synthetic peptide corresponding to Human TOM1 aa 450-550. Database link: O60784
阳性对照	HeLa and 293T whole cell lysates
常规说明	<p>The Life Science industry has been in the grips of a reproducibility crisis for a number of years. Abcam is leading the way in addressing this with our range of recombinant monoclonal antibodies and knockout edited cell lines for gold-standard validation. Please check that this product meets your needs before purchasing.</p> <p>If you have any questions, special requirements or concerns, please send us an inquiry and/or contact our Support team ahead of purchase. Recommended alternatives for this product can be found below, along with publications, customer reviews and Q&As</p>

性能

形式	Liquid
存放说明	Shipped at 4°C. Upon delivery aliquot and store at -20°C. Avoid freeze / thaw cycles.
存储溶液	pH: 6.8 Preservative: 0.09% Sodium azide Constituents: 0.1% BSA, Tris buffered saline
纯度	Immunogen affinity purified
纯化说明	ab99356 was affinity purified using an epitope specific to TOM1 immobilized on solid support.
克隆	多克隆
同种型	IgG

The Abpromise guarantee **Abpromise™**承诺保证使用ab99356于以下的经测试应用

“应用说明”部分 下显示的仅为推荐的起始稀释度;实际最佳的稀释度/浓度应由使用者检定。

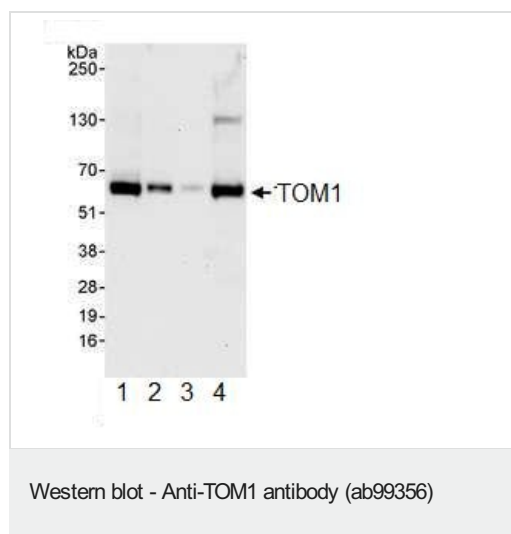
应用	Ab评论	说明
WB		1/2000 - 1/10000. Predicted molecular weight: 54 kDa.
IP		Use at 2-5 µg/mg of lysate.

靶标**相关性**

Function: May be involved in intracellular trafficking. Probable association with membranes.
Tissue specificity: Widely expressed. Highly expressed in skeletal muscle, heart, placenta and liver. Similarity: Belongs to the TOM1 family. Contains 1 GAT domain. Contains 1 VHS domain.

细胞定位

Cytoplasm. Membrane; Peripheral membrane protein

图片

All lanes : Anti-TOM1 antibody (ab99356) at 0.04 µg/ml

Lane 1 : HeLa whole cell lysate at 50 µg

Lane 2 : HeLa whole cell lysate at 15 µg

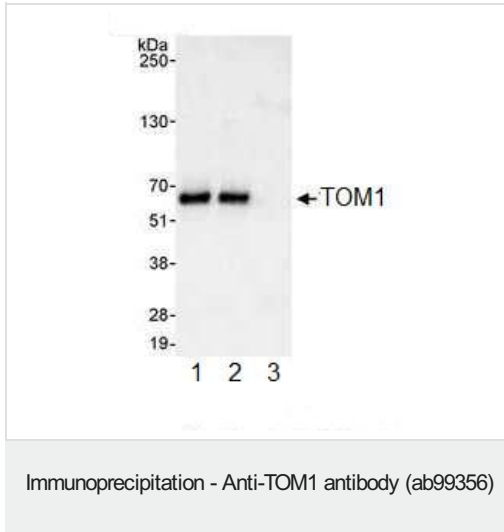
Lane 3 : HeLa whole cell lysate at 5 µg

Lane 4 : 293T whole cell lysate at 50 µg

Developed using the ECL technique.

Predicted band size: 54 kDa

Exposure time: 30 seconds



ab99356, at 1 µg/ml, detecting TOM1 in HeLa whole cell lysate by Western blot analysis following Immunoprecipitation (IP). Detection utilized ECL with a 3 second exposure.

For immunoprecipitation, ab99356 was used at 3 µg/mg lysate; 1 mg of lysate was used for IP and 20% of IP was loaded.

Lane 1; IP using **ab99355** (a rabbit anti-TOM1 antibody which recognizes an upstream epitope).

Lane 2; IP using ab99356.

Lane 3; IP using control IgG.

Please note: All products are "FOR RESEARCH USE ONLY. NOT FOR USE IN DIAGNOSTIC PROCEDURES"

Our Abpromise to you: Quality guaranteed and expert technical support

- Replacement or refund for products not performing as stated on the datasheet
- Valid for 12 months from date of delivery
- Response to your inquiry within 24 hours
- We provide support in Chinese, English, French, German, Japanese and Spanish
- Extensive multi-media technical resources to help you
- We investigate all quality concerns to ensure our products perform to the highest standards

If the product does not perform as described on this datasheet, we will offer a refund or replacement. For full details of the Abpromise, please visit <https://www.abcam.cn/abpromise> or contact our technical team.

Terms and conditions

- Guarantee only valid for products bought direct from Abcam or one of our authorized distributors