

Anti-TMEM161A antibody [EPR14369] ab180954

重组 RabMAb

1 References **5 图像**

概述

| | |
|-------|---|
| 产品名称 | Anti-TMEM161A抗体[EPR14369] |
| 描述 | 兔单克隆抗体[EPR14369] to TMEM161A |
| 宿主 | Rabbit |
| 经测试应用 | 适用于: WB, IHC-P |
| 种属反应性 | 与反应: Human |
| 免疫原 | Recombinant fragment. This information is proprietary to Abcam and/or its suppliers. |
| 阳性对照 | HT 1080, HepG2 and Human fetal liver lysates; Human lung adenocarcinoma tissue; Human infiltrating duct carcinoma of breast tissue. |
| 常规说明 | <p>This product is a recombinant monoclonal antibody, which offers several advantages including:</p> <ul style="list-style-type: none"> - High batch-to-batch consistency and reproducibility - Improved sensitivity and specificity - Long-term security of supply - Animal-free production <p>For more information see here.</p> <p>Our RabMAb[®] technology is a patented hybridoma-based technology for making rabbit monoclonal antibodies. For details on our patents, please refer to RabMAb[®] patents.</p> |

性能

| | |
|------|---|
| 形式 | Liquid |
| 存放说明 | Shipped at 4°C. Store at +4°C short term (1-2 weeks). Upon delivery aliquot. Store at -20°C long term. Avoid freeze / thaw cycle. |
| 存储溶液 | <p>Preservative: 0.01% Sodium azide</p> <p>Constituents: 59% PBS, 40% Glycerol (glycerin, glycerine), 0.05% BSA</p> |
| 纯度 | Protein A purified |
| 克隆 | 单克隆 |
| 克隆编号 | EPR14369 |
| 同种型 | IgG |

应用

The Abpromise guarantee **Abpromise™**承诺保证使用ab180954于以下的经测试应用

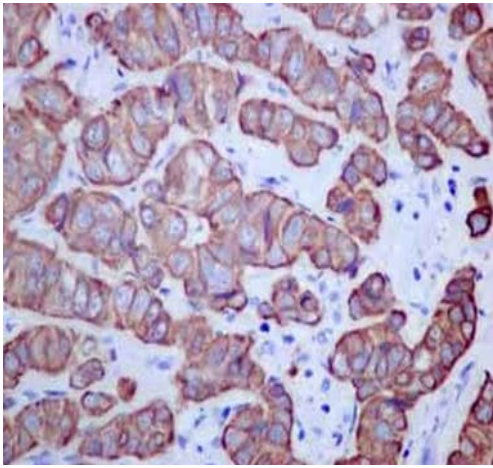
“应用说明”部分 下显示的仅为推荐的起始稀释度;实际最佳的稀释度/浓度应由使用者检定。

| 应用 | Ab评论 | 说明 |
|-------|------|---|
| WB | | 1/10000 - 1/50000. Detects a band of approximately 54 kDa (predicted molecular weight: 53 kDa). |
| IHC-P | | 1/100. Perform heat mediated antigen retrieval with Tris/EDTA buffer pH 9.0 before commencing with IHC staining protocol. |

靶标

| | |
|-------|---|
| 功能 | May play a role in protection against oxidative stress. Overexpression leads to reduced levels of oxidant-induced DNA damage and apoptosis. |
| 序列相似性 | Belongs to the TMEM161 family. |
| 细胞定位 | Membrane. |

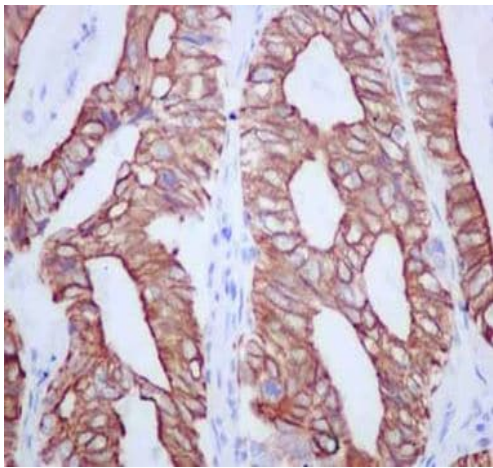
图片



Immunohistochemistry (Formalin/PFA-fixed paraffin-embedded sections) - Anti-TMEM161A antibody [EPR14369] (ab180954)

Immunohistochemical analysis of paraffin-embedded Human infiltrating duct carcinoma of breast tissue labeling TMEM161A with ab180954 at 1/100 dilution, followed by prediluted ImmunoHistoprobe (Ready to use) HRP Polymer for Rabbit IgG. Counterstained with Hematoxylin.

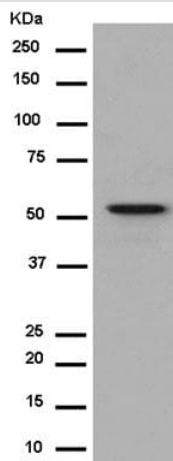
Perform heat mediated antigen retrieval with EDTA buffer pH 9 before commencing with IHC staining protocol.



Immunohistochemistry (Formalin/PFA-fixed paraffin-embedded sections) - Anti-TMEM161A antibody [EPR14369] (ab180954)

Immunohistochemical analysis of paraffin-embedded Human lung adenocarcinoma tissue labeling TMEM161A with ab180954 at 1/100 dilution, followed by prediluted ImmunoHistoprobe (Ready to use) HRP Polymer for Rabbit IgG. Counterstained with Hematoxylin.

Perform heat mediated antigen retrieval with EDTA buffer pH 9 before commencing with IHC staining protocol.



Western blot - Anti-TMEM161A antibody [EPR14369] (ab180954)

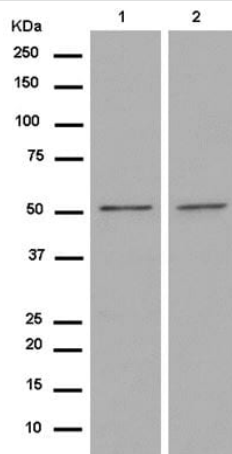
Anti-TMEM161A antibody [EPR14369] (ab180954) at 1/20000 dilution + Human fetal liver tissue lysate at 20 µg

Secondary

Anti-Rabbit IgG (HRP), specific to the non-reduced form of IgG at 1/1000 dilution

Predicted band size: 53 kDa

Observed band size: 54 kDa



Western blot - Anti-TMEM161A antibody
[EPR14369] (ab180954)

All lanes : Anti-TMEM161A antibody [EPR14369] (ab180954) at 1/100000 dilution

Lane 1 : HT1080 cell lysate

Lane 2 : HepG2 cell lysate

Lysates/proteins at 20 µg per lane.

Secondary

All lanes : Goat Anti-Rabbit IgG, (H+L), Peroxidase conjugate at 1/1000 dilution

Predicted band size: 53 kDa

Observed band size: 54 kDa

Why choose a recombinant antibody?



Research with confidence
Consistent and reproducible results



Long-term and scalable supply
Recombinant technology



Success from the first experiment
Confirmed specificity



Ethical standards compliant
Animal-free production

Anti-TMEM161A antibody [EPR14369] (ab180954)

Please note: All products are "FOR RESEARCH USE ONLY. NOT FOR USE IN DIAGNOSTIC PROCEDURES"

Our Promise to you: Quality guaranteed and expert technical support

- Replacement or refund for products not performing as stated on the datasheet
- Valid for 12 months from date of delivery
- Response to your inquiry within 24 hours

- We provide support in Chinese, English, French, German, Japanese and Spanish
- Extensive multi-media technical resources to help you
- We investigate all quality concerns to ensure our products perform to the highest standards

If the product does not perform as described on this datasheet, we will offer a refund or replacement. For full details of the Abpromise, please visit <https://www.abcam.cn/abpromise> or contact our technical team.

Terms and conditions

- Guarantee only valid for products bought direct from Abcam or one of our authorized distributors