


### Anti-TLR9 antibody [26C593.2] ab134368

[19 References](#) [5 图像](#)

#### 概述

产品名称	Anti-TLR9抗体[26C593.2]
描述	小鼠单克隆抗体[26C593.2] to TLR9
宿主	Mouse
经测试应用	适用于: WB, Flow Cyt (Intra), ICC/IF, IHC-P
种属反应性	与反应: Mouse, Rat, Human 预测可用于: Chimpanzee, Cynomolgus monkey, Gorilla, Orangutan 
免疫原	Synthetic peptide corresponding to Human TLR9 aa 268-284 conjugated to keyhole limpet haemocyanin. AAF78037 Sequence: CPRHFPQLHPDTFSHLS  Database link: <a href="#">Q9NR96</a> <a href="#">Run BLAST with</a> <a href="#">Run BLAST with</a>
阳性对照	WB: Human peripheral blood mononuclear cells (PBMCs). Human, mouse and rat intestine tissue lysates. Flow Cyt (Intra): Ramos and PBMC cells. IHC-P: Human spleen tissue. ICC/IF: A549 cells.
常规说明	The Life Science industry has been in the grips of a reproducibility crisis for a number of years. Abcam is leading the way in addressing this with our range of recombinant monoclonal antibodies and knockout edited cell lines for gold-standard validation. Please check that this product meets your needs before purchasing.  If you have any questions, special requirements or concerns, please send us an inquiry and/or contact our Support team ahead of purchase. Recommended alternatives for this product can be found below, along with publications, customer reviews and Q&As

#### 性能

形式	Liquid
存放说明	Shipped at 4°C. Store at 4°C (up to 6 months). Upon delivery aliquot. Store at -20°C long term. Avoid freeze / thaw cycle.
存储溶液	pH: 7.40 Preservative: 0.05% Sodium azide

	Constituents: 0.05% BSA, PBS
纯度	Protein G purified
克隆	单克隆
克隆编号	26C593.2
同种型	IgG1
轻链类型	kappa

## 应用

**The Abpromise guarantee**      **Abpromise™** 承诺保证使用 ab134368 于以下的经测试应用

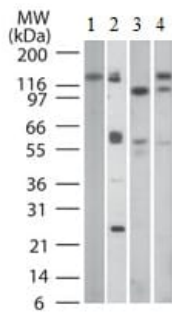
“应用说明”部分 下显示的仅为推荐的起始稀释度;实际最佳的稀释度/浓度应由使用者检定。

应用	Ab评论	说明
WB		Use a concentration of 1 - 5 µg/ml. Detects a band of approximately 120 kDa (predicted molecular weight: 115 kDa).
Flow Cyt (Intra)		Use 0.1-2µg for 10 <sup>6</sup> cells. <b>ab170190</b> - Mouse monoclonal IgG1, is suitable for use as an isotype control with this antibody.
ICC/IF		Use at an assay dependent concentration.
IHC-P		Use a concentration of 5 µg/ml.

## 靶标

功能	Key component of innate and adaptive immunity. TLRs (Toll-like receptors) control host immune response against pathogens through recognition of molecular patterns specific of microorganisms. TLR9 is a nucleotide-sensing TLR which is activated by unmethylated cytidine-phosphate-guanosine (CpG) dinucleotides. Acts via MYD88 and TRAF6, leading to NF-kappa-B activation, cytokine secretion and the inflammatory response.
组织特异性	Highly expressed in spleen, lymph node, tonsil and peripheral blood leukocytes, especially in plasmacytoid pre-dendritic cells. Levels are much lower in monocytes and CD11c+ immature dendritic cells. Also detected in lung and liver.
序列相似性	Belongs to the Toll-like receptor family. Contains 26 LRR (leucine-rich) repeats. Contains 1 TIR domain.
细胞定位	Endoplasmic reticulum membrane. Endosome. Lysosome. Cytoplasmic vesicle > phagosome. Relocalizes from endoplasmic reticulum to endosome and lysosome upon stimulation with agonist.

## 图片



Western blot - Anti-TLR9 antibody [26C593.2] (ab134368)

**All lanes :** Anti-TLR9 antibody [26C593.2] (ab134368) at 3 µg/ml

**Lane 1 :** Human peripheral blood mononuclear cells (PBMCs)

**Lane 2 :** Human intestine tissue lysate

**Lane 3 :** Mouse intestine tissue lysate

**Lane 4 :** Rat intestine tissue lysate

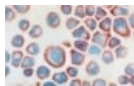
Lysates/proteins at 40 µg per lane.

### Secondary

**All lanes :** Goat anti-mouse HRP conjugate

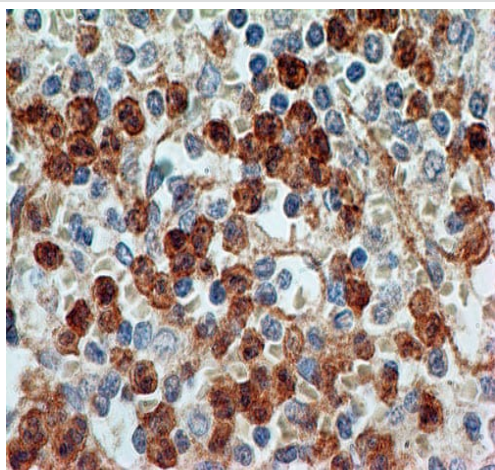
**Predicted band size:** 115 kDa

**Observed band size:** 120 kDa



Immunocytochemistry/ Immunofluorescence - Anti-TLR9 antibody [26C593.2] (ab134368)

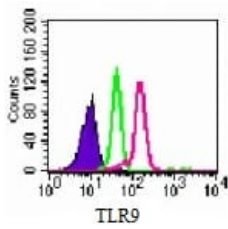
Immunohistochemical analysis of TLR9 in frozen sections of A549 (Human lung carcinoma cell line) cells, using ab134368 at a 1/100 dilution.



Immunohistochemistry (Formalin/PFA-fixed paraffin-embedded sections) - Anti-TLR9 antibody [26C593.2] (ab134368)

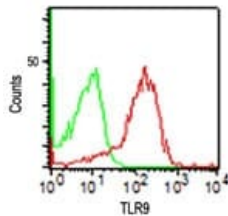
Immunohistochemistry (Formalin/PFA-fixed paraffin-embedded sections) analysis of human spleen tissue labelling TLR9 with ab134368 at 5 µg/ml.

Staining was enhanced by boiling tissue sections in 10 mM sodium citrate buffer, pH 6.0 for 10-20 minutes followed by cooling at room temperature for 20 minutes.



Flow Cytometry (Intracellular) - Anti-TLR9 antibody  
[26C593.2] (ab134368)

Flow Cytometric analysis of TLR9 in Ramos (Human Burkitt's lymphoma cell line) cells labelled with ab134368 at 0.1  $\mu$ g (pink), no antibody (blue) or isotype control antibody (green). Goat anti-mouse IgG FITC secondary was used.



Flow Cytometry (Intracellular) - Anti-TLR9 antibody  
[26C593.2] (ab134368)

Flow Cytometric analysis of TLR9 in human PBMC cells labelled with ab134368 at 0.5  $\mu$ g (red) or an isotype control antibody (green).

**Please note:** All products are "FOR RESEARCH USE ONLY. NOT FOR USE IN DIAGNOSTIC PROCEDURES"

### Our Abpromise to you: Quality guaranteed and expert technical support

- Replacement or refund for products not performing as stated on the datasheet
- Valid for 12 months from date of delivery
- Response to your inquiry within 24 hours
- We provide support in Chinese, English, French, German, Japanese and Spanish
- Extensive multi-media technical resources to help you
- We investigate all quality concerns to ensure our products perform to the highest standards

If the product does not perform as described on this datasheet, we will offer a refund or replacement. For full details of the Abpromise, please visit <https://www.abcam.cn/abpromise> or contact our technical team.

### Terms and conditions

- Guarantee only valid for products bought direct from Abcam or one of our authorized distributors