

# Anti-TLR2 antibody [TL2.1] - Low endotoxin, Azide free ab174605

## 1 图像

### 概述

|       |  |
|-------|--|
| 产品名称  | Anti-TLR2抗体[TL2.1] - Low endotoxin, Azide free                                   |
| 描述    | 小鼠单克隆抗体[TL2.1] to TLR2 - Low endotoxin, Azide free                               |
| 宿主    | Mouse  |
| 经测试应用 | 适用于: Flow Cyt  |
| 种属反应性 | 与反应: Human   |
| 免疫原   | The details of the immunogen for this antibody are not available.                |
| 阳性对照  | Normal Human peripheral blood cells.   |
| 常规说明  | Endotoxin Level: Less than 0.001 ng/μg antibody, as determined by the LAL assay. |

The Life Science industry has been in the grips of a reproducibility crisis for a number of years. Abcam is leading the way in addressing this with our range of recombinant monoclonal antibodies and knockout edited cell lines for gold-standard validation. Please check that this product meets your needs before purchasing.

If you have any questions, special requirements or concerns, please send us an inquiry and/or contact our Support team ahead of purchase. Recommended alternatives for this product can be found below, along with publications, customer reviews and Q&As

### 性能

|      |   |
|------|---|
| 形式   | Liquid  |
| 存放说明 | Shipped at 4°C. Store at +4°C short term (1-2 weeks). Upon delivery aliquot. Store at -20°C long term. Avoid freeze / thaw cycle. |
| 存储溶液 | pH: 7.2   |
|      | Aqueous buffer.   |
| 无载体  | 是   |
| 纯度   | Protein G purified  |
| 克隆   | 单克隆   |
| 克隆编号 | TL2.1   |
| 同种型  | IgG2a   |

轻链类型

kappa

应用

The Abpromise guarantee

Abpromise™承诺保证使用ab174605于以下的经测试应用

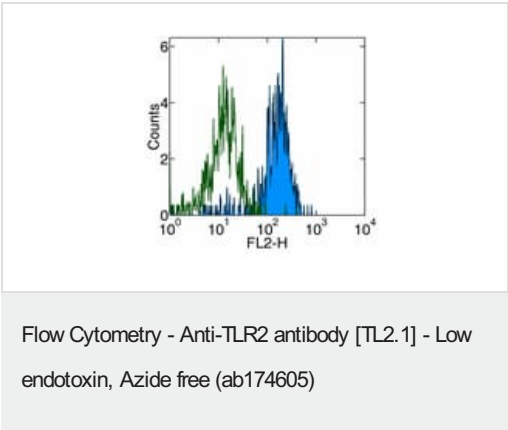
“应用说明”部分 下显示的仅为推荐的起始稀释度;实际最佳的稀释度/浓度应由使用者检定。

| 应用       | Ab评论 | 说明  |
|----------|------|---|
| Flow Cyt |      | Use 1µg for 10 <sup>5-8</sup> cells.<br>(in a final volume of 100 µL).<br><b>ab170191</b> - Mouse monoclonal IgG2a, is suitable for use as an isotype control with this antibody. |

靶标

|       |   |
|-------|---|
| 功能    | Cooperates with LY96 to mediate the innate immune response to bacterial lipoproteins and other microbial cell wall components. Cooperates with TLR1 to mediate the innate immune response to bacterial lipoproteins or lipopeptides. Acts via MYD88 and TRAF6, leading to NF-kappa-B activation, cytokine secretion and the inflammatory response. May also promote apoptosis in response to lipoproteins. Recognizes mycoplasmal macrophage-activating lipopeptide-2kD (MALP-2), soluble tuberculosis factor (STF), phenol-soluble modulin (PSM) and B.burgdorferi outer surface protein A lipoprotein (OspA-L) cooperatively with TLR6. |
| 组织特异性 | Highly expressed in peripheral blood leukocytes, in particular in monocytes, in bone marrow, lymph node and in spleen. Also detected in lung and in fetal liver. Levels are low in other tissues.   |
| 序列相似性 | Belongs to the Toll-like receptor family.<br>Contains 14 LRR (leucine-rich) repeats.<br>Contains 1 TIR domain.  |
| 翻译后修饰 | Glycosylation of Asn-442 is critical for secretion of the N-terminal ectodomain of TLR2.  |
| 细胞定位  | Membrane.   |

图片



Staining of normal Human peripheral blood cells with Anti-Human CD282 (TLR2) PE. Appropriate isotype controls were used (open histogram). Cells in the monocyte population were used for analysis.

**Please note:** All products are "FOR RESEARCH USE ONLY. NOT FOR USE IN DIAGNOSTIC PROCEDURES"

### **Our Abpromise to you: Quality guaranteed and expert technical support**

---

- Replacement or refund for products not performing as stated on the datasheet
- Valid for 12 months from date of delivery
- Response to your inquiry within 24 hours
  
- We provide support in Chinese, English, French, German, Japanese and Spanish
- Extensive multi-media technical resources to help you
- We investigate all quality concerns to ensure our products perform to the highest standards

If the product does not perform as described on this datasheet, we will offer a refund or replacement. For full details of the Abpromise, please visit <https://www.abcam.cn/abpromise> or contact our technical team.

### **Terms and conditions**

---

- Guarantee only valid for products bought direct from Abcam or one of our authorized distributors