

Anti-Tissue Plasminogen Activator antibody ab62763

3 References 2 图像

概述	
产品名称	Anti-Tissue Plasminogen活化剂抗体
描述	兔多克隆抗体to组织Plasminogen活化剂
宿主	Rabbit
经测试应用	适用于: ELISA, WB
种属反应性	与反应: Mouse, Rat
免疫原	Recombinant full length protein corresponding to Mouse TPA Tissue Plasminogen Activator.
阳性对照	WB: Mouse TPA Tissue Plasminogen Activator (non-reduced).
常规说明	<p>The concentration of this antibody is lot specific.</p> <p>The Life Science industry has been in the grips of a reproducibility crisis for a number of years. Abcam is leading the way in addressing this with our range of recombinant monoclonal antibodies and knockout edited cell lines for gold-standard validation. Please check that this product meets your needs before purchasing.</p> <p>If you have any questions, special requirements or concerns, please send us an inquiry and/or contact our Support team ahead of purchase. Recommended alternatives for this product can be found below, along with publications, customer reviews and Q&As</p>
性能	
形式	Liquid
存放说明	Shipped at 4°C. Upon delivery aliquot. Store at -80°C. Avoid freeze / thaw cycle.
存储溶液	Constituents: 0.82% Sodium phosphate, 0.0292% EDTA, 0.58% Sodium chloride
纯度	Protein A purified
克隆	多克隆
同种型	IgG
应用	

The Abpromise guarantee **Abpromise™**承诺保证使用ab62763于以下的经测试应用

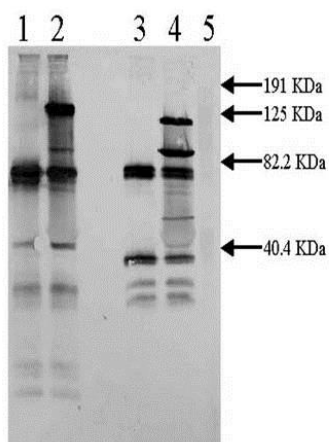
“应用说明”部分 下显示的仅为推荐的起始稀释度;实际最佳的稀释度/浓度应由使用者检定。

应用	Ab评论	说明
ELISA		Use at an assay dependent concentration.
WB		Use a concentration of 1 - 5 µg/ml. Detects a band of approximately 75 kDa (predicted molecular weight: 62 kDa).

靶标

功能	<p>Converts the abundant, but inactive, zymogen plasminogen to plasmin by hydrolyzing a single Arg-Val bond in plasminogen. By controlling plasmin-mediated proteolysis, it plays an important role in tissue remodeling and degradation, in cell migration and many other physiopathological events.</p> <p>Play a direct role in facilitating neuronal migration.</p>
组织特异性	<p>Synthesized in numerous tissues (including tumors) and secreted into most extracellular body fluids, such as plasma, uterine fluid, saliva, gingival crevicular fluid, tears, seminal fluid, and milk.</p>
疾病相关	<p>Note=Increased activity of TPA results in increased fibrinolysis of fibrin blood clots that is associated with excessive bleeding. Defective release of TPA results in hypofibrinolysis that can lead to thrombosis or embolism.</p>
序列相似性	<p>Belongs to the peptidase S1 family.</p> <p>Contains 1 EGF-like domain.</p> <p>Contains 1 fibronectin type-I domain.</p> <p>Contains 2 kringle domains.</p> <p>Contains 1 peptidase S1 domain.</p>
结构域	<p>Both FN1 and one of the kringle domains are required for binding to fibrin.</p> <p>Both FN1 and EGF-like domains are important for binding to LRP1.</p> <p>The FN1 domain mediates binding to annexin A2.</p> <p>The second kringle domain is implicated in binding to cytokeratin-8 and to the endothelial cell surface binding site.</p>
翻译后修饰	<p>The single chain, almost fully active enzyme, can be further processed into a two-chain fully active form by a cleavage after Arg-310 catalyzed by plasmin, tissue kallikrein or factor Xa.</p> <p>Differential cell-specific N-linked glycosylation gives rise to two glycoforms, type I (glycosylated at Asn-219) and type II (not glycosylated at Asn-219). The single chain type I glycoform is less readily converted into the two-chain form by plasmin, and the two-chain type I glycoform has a lower activity than the two-chain type II glycoform in the presence of fibrin.</p> <p>N-glycosylation of Asn-152; the bound oligomannosidic glycan is involved in the interaction with the mannose receptor.</p> <p>Characterization of O-linked glycan was studied in Bowes melanoma cell line.</p>
细胞定位	<p>Secreted > extracellular space.</p>

图片



Western blot - Anti-Tissue Plasminogen Activator antibody (ab62763)

All lanes : Anti-Tissue Plasminogen Activator antibody (ab62763) at 2 µg/ml

Lane 1 : Mouse TPA Tissue Plasminogen Activator (non-reduced) at 0.5 µg

Lane 2 : Mouse TPA Tissue Plasminogen Activator + 3 µg CPAI (non-reduced) at 0.5 µg

Lane 3 : Mouse TPA Tissue Plasminogen Activator (reduced) at 0.5 µg

Lane 4 : Mouse TPA Tissue Plasminogen Activator + 3 µg CPAI (reduced) at 0.5 µg

Lane 5 : Marker

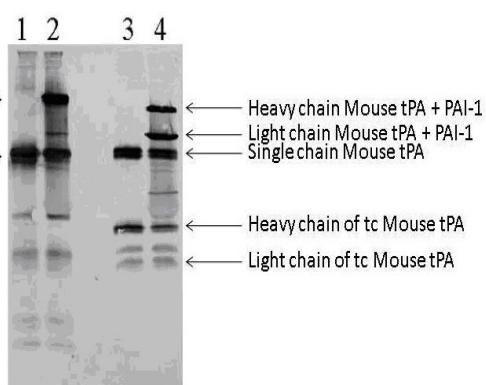
Secondary

All lanes : Anti Rabbit IgG ABC Kit

Predicted band size: 62 kDa

Observed band size: 75 kDa

Additional bands at: 100 kDa, 125 kDa, 38 kDa, 85 kDa. We are unsure as to the identity of these extra bands.



Western Blot - 10% SDS-PAGE

Western blot - Anti-Tissue Plasminogen Activator antibody (ab62763)

Please note: All products are "FOR RESEARCH USE ONLY. NOT FOR USE IN DIAGNOSTIC PROCEDURES"

Our Abpromise to you: Quality guaranteed and expert technical support

- Replacement or refund for products not performing as stated on the datasheet
- Valid for 12 months from date of delivery
- Response to your inquiry within 24 hours

- We provide support in Chinese, English, French, German, Japanese and Spanish
- Extensive multi-media technical resources to help you
- We investigate all quality concerns to ensure our products perform to the highest standards

If the product does not perform as described on this datasheet, we will offer a refund or replacement. For full details of the Abpromise, please visit <https://www.abcam.cn/abpromise> or contact our technical team.

Terms and conditions

- Guarantee only valid for products bought direct from Abcam or one of our authorized distributors