

Anti-Tissue kallikrein antibody ab28289

4 References [2 图像](#)

概述

产品名称	Anti-Tissue kallikrein抗体
描述	兔多克隆抗体to组织kallikrein
宿主	Rabbit
特异性	ab28289 recognises the Kallikrein loop of Tissue kallikrein. It does not react with the other human Kallikreins.
经测试应用	适用于: WB, IHC-P
种属反应性	与反应: Human
免疫原	Synthetic peptide corresponding to Human Tissue kallikrein. Corresponding to the the Kallikrein loop area of Tissue kallikrein. (Peptide available as ab41419)
常规说明	<p>The Life Science industry has been in the grips of a reproducibility crisis for a number of years. Abcam is leading the way in addressing this with our range of recombinant monoclonal antibodies and knockout edited cell lines for gold-standard validation. Please check that this product meets your needs before purchasing.</p> <p>If you have any questions, special requirements or concerns, please send us an inquiry and/or contact our Support team ahead of purchase. Recommended alternatives for this product can be found below, along with publications, customer reviews and Q&As</p>

性能

形式	Liquid
存放说明	Shipped at 4°C. Store at +4°C short term (1-2 weeks). Upon delivery aliquot. Store at -20°C long term.
存储溶液	Preservative: 0.05% Sodium azide Constituent: 50% Glycerol
纯度	Immunogen affinity purified
克隆	多克隆
同种型	IgG

应用

The Abpromise guarantee

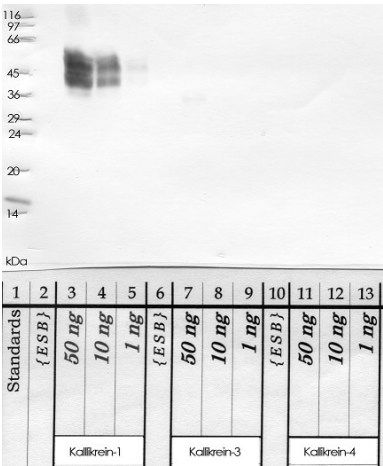
Abpromise™承诺保证使用ab28289于以下的经测试应用

“应用说明”部分 下显示的仅为推荐的起始稀释度;实际最佳的稀释度/浓度应由使用者检定。

应用	Ab评论	说明
WB		1/1000 - 1/5000. Predicted molecular weight: 28 kDa.
IHC-P		Use a concentration of 1 µg/ml. Perform heat mediated antigen retrieval with Tris/EDTA buffer pH 9.0 before commencing with IHC staining protocol.

靶标	
功能	Glandular kallikreins cleave Met-Lys and Arg-Ser bonds in kininogen to release Lys-bradykinin.
组织特异性	Isoform 2 is expressed in pancreas, salivary glands, kidney, colon, prostate gland, testis, spleen and the colon adenocarcinoma cell line T84.
序列相似性	Belongs to the peptidase S1 family. Kallikrein subfamily. Contains 1 peptidase S1 domain.
翻译后修饰	The O-linked polysaccharides on Ser-93, Ser-104 and Ser-167 are probably the mucin type linked to GalNAc. In PubMed:3163150, GalNAc was detected with the corresponding peptides but not located.

图片

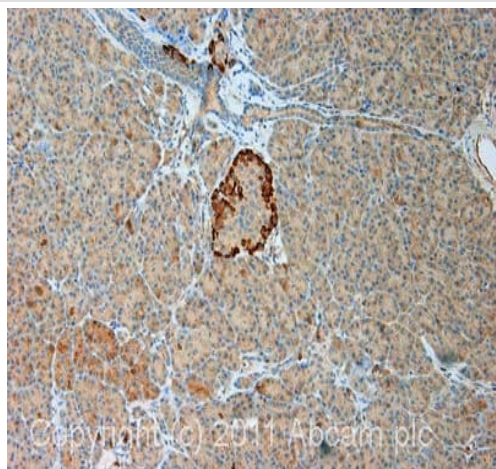


Western blot - Anti-Tissue kallikrein antibody (ab28289)

All lanes : Anti-Tissue kallikrein antibody (ab28289) at 1/1000 dilution

Lane 3 : Kallikrein-1 (rhK-1) at 0.05 µg
Lane 4 : Kallikrein-1 (rhK-1) at 0.01 µg
Lane 5 : Kallikrein-1 (rhK-1) at 0.001 µg
Lane 7 : Kallikrein-3 (rhK-3) at 0.05 µg
Lane 8 : Kallikrein-3 (rhK-3) at 0.01 µg
Lane 9 : Kallikrein-3 (rhK-3) at 0.001 µg
Lane 11 : Kallikrein-4 (rhK-4) at 0.05 µg
Lane 12 : Kallikrein-4 (rhK-4) at 0.01 µg
Lane 13 : Kallikrein-4 (rhK-4) at 0.001 µg

Predicted band size: 28 kDa



Immunohistochemistry (Formalin/PFA-fixed paraffin-embedded sections) - Anti-Tissue kallikrein antibody (ab28289)

IHC image of ab28289 staining in human normal pancreas formalin fixed paraffin embedded tissue section, performed on a Leica Bond™ system using the standard protocol F. The section was pre-treated using heat mediated antigen retrieval with EDTA (pH9, epitope retrieval solution 2) for 20 mins. The section was then incubated with ab28289, 1 µg/ml, for 15 mins at room temperature and detected using an HRP conjugated compact polymer system. DAB was used as the chromogen. The section was then counterstained with haematoxylin and mounted with DPX.

For other IHC staining systems (automated and non-automated) customers should optimize variable parameters such as antigen retrieval conditions, primary antibody concentration and antibody incubation times.

Please note: All products are "FOR RESEARCH USE ONLY. NOT FOR USE IN DIAGNOSTIC PROCEDURES"

Our Abpromise to you: Quality guaranteed and expert technical support

- Replacement or refund for products not performing as stated on the datasheet
- Valid for 12 months from date of delivery
- Response to your inquiry within 24 hours
- We provide support in Chinese, English, French, German, Japanese and Spanish
- Extensive multi-media technical resources to help you
- We investigate all quality concerns to ensure our products perform to the highest standards

If the product does not perform as described on this datasheet, we will offer a refund or replacement. For full details of the Abpromise, please visit <https://www.abcam.cn/abpromise> or contact our technical team.

Terms and conditions

- Guarantee only valid for products bought direct from Abcam or one of our authorized distributors