

### Anti-Thymidine Kinase 1/TK1 antibody [EPR3193] ab76495

敲除验证
重组
RabMAb

★★★★☆
2 Abreviews
23 References
7 图像

#### 概述

产品名称	Anti-Thymidine Kinase 1/TK1抗体[EPR3193]
描述	兔单克隆抗体[EPR3193] to Thymidine Kinase 1/TK1
宿主	Rabbit
经测试应用	适用于: Flow Cyt (Intra), WB, IP, IHC-P
种属反应性	与反应: Human
免疫原	Synthetic peptide. This information is proprietary to Abcam and/or its suppliers.
阳性对照	WB: HEK-293T, Jurkat, HAP1, SW620, U-2 OS, and MOLT-4 cell lysates. Human tonsil tissue lysate; IP: MOLT-4 whole cell lysate; IHC-P: Human tonsil tissue; Flow Cyt (intra): HeLa cells.
常规说明	<p>This product is a recombinant monoclonal antibody, which offers several advantages including:</p> <ul style="list-style-type: none"> <li>- High batch-to-batch consistency and reproducibility</li> <li>- Improved sensitivity and specificity</li> <li>- Long-term security of supply</li> <li>- Animal-free production</li> </ul> <p>For more information <a href="#">see here</a>.</p> <p>Our RabMAb<sup>®</sup> technology is a patented hybridoma-based technology for making rabbit monoclonal antibodies. For details on our patents, please refer to <a href="#">RabMAb<sup>®</sup> patents</a>.</p> <p>Mouse, Rat: We have preliminary internal testing data to indicate this antibody may not react with these species. Please contact us for more information.</p>

#### 性能

形式	Liquid
存放说明	Shipped at 4°C. Store at +4°C short term (1-2 weeks). Upon delivery aliquot. Store at -20°C long term. Avoid freeze / thaw cycle.
存储溶液	<p>pH: 7.20</p> <p>Preservative: 0.01% Sodium azide</p> <p>Constituents: 59% PBS, 40% Glycerol (glycerin, glycerine), 0.05% BSA</p>
纯度	Protein A purified
克隆	单克隆

克隆编号EPR3193

同种型IgG

应用

The Abpromise guarantee      **Abpromise™**承诺保证使用ab76495于以下的经测试应用

“应用说明”部分 下显示的仅为推荐的起始稀释度;实际最佳的稀释度/浓度应由使用者检定。

应用	Ab评论	说明
Flow Cyt (Intra)		1/200. For unpurified use at 1/70 <b>ab172730</b> - Rabbit monoclonal IgG, is suitable for use as an isotype control with this antibody.
WB		1/1000. Detects a band of approximately 25 kDa (predicted molecular weight: 25 kDa). <b>For unpurified use at 1/5000 - 1/50000</b>
IP		1/20.
IHC-P		1/100 - 1/250. Perform heat mediated antigen retrieval with Tris/EDTA buffer pH 9.0 before commencing with IHC staining protocol. See <b><u>IHC antigen retrieval protocols</u></b> .

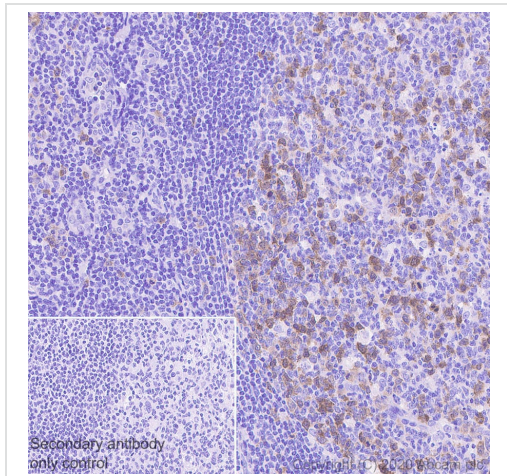
靶标

序列相似性Belongs to the thymidine kinase family.

翻译后修饰Phosphorylated on Ser-13 in mitosis.

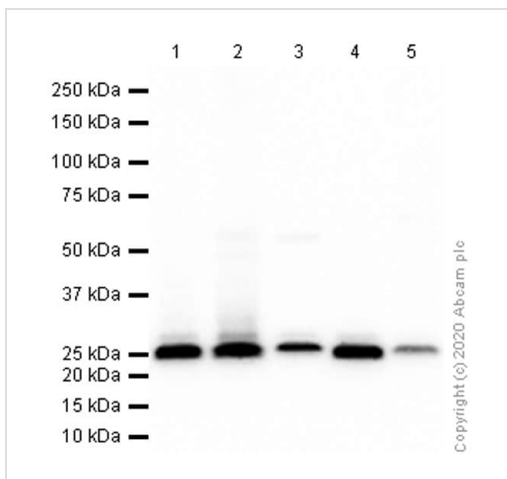
细胞定位Cytoplasm.

图片



Immunohistochemistry (Formalin/PFA-fixed paraffin-embedded sections) - Anti-Thymidine Kinase 1/TK1 antibody [EPR3193] (ab76495)

Immunohistochemistry (Formalin/PFA-fixed paraffin-embedded sections) analysis of Human tonsil tissue sections labeling Thymidine Kinase 1/TK1 with purified ab76495 at 1/200 dilution (0.85 µg/mL). Heat mediated antigen retrieval using Bond™ Epitope Retrieval Solution 2 (pH 9.0). The immunostaining was performed on a Leica Biosystems BOND® RX instrument. Rabbit specific IHC polymer detection kit HRP/DAB ([ab209101](#)) was used as the secondary antibody. Negative control: PBS instead of the primary antibody. Hematoxylin was used as a counterstain.



Western blot - Anti-Thymidine Kinase 1/TK1 antibody [EPR3193] (ab76495)

**All lanes :** Anti-Thymidine Kinase 1/TK1 antibody [EPR3193] (ab76495) at 1/1000 dilution (Purified)

**Lane 1 :** MOLT-4 (Human lymphoblastic leukemia T lymphoblast) whole cell lysate

**Lane 2 :** U-2 OS (Human bone osteosarcoma epithelial cell) whole cell lysate

**Lane 3 :** SW620 (Human colorectal adenocarcinoma epithelial cell) whole cell lysate

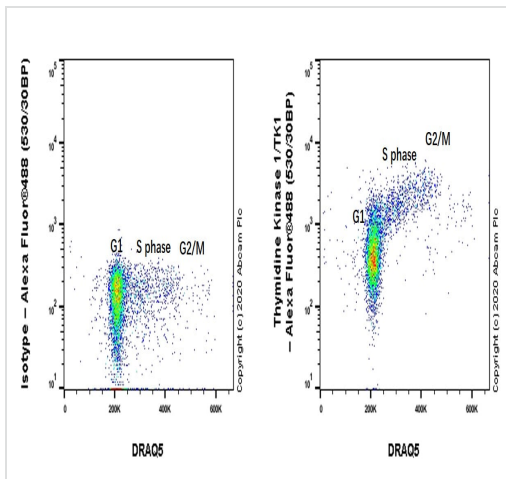
**Lane 4 :** Jurkat (Human T cell leukemia T lymphocyte) whole cell lysate

**Lane 5 :** Human tonsil lysate

### Secondary

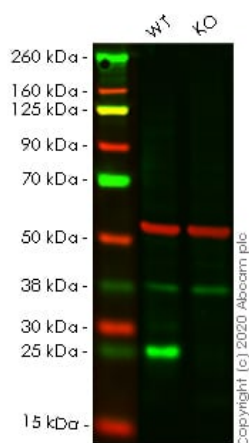
**All lanes :** Goat Anti-Rabbit IgG (HRP) with minimal cross-reactivity with human IgG at 1/2000 dilution

**Predicted band size:** 25 kDa



Flow Cytometry (Intracellular) - Anti-Thymidine Kinase 1/TK1 antibody [EPR3193] (ab76495)

Intracellular Flow Cytometry analysis of HeLa (Human cervix adenocarcinoma epithelial cell) cells labeling Thymidine Kinase 1/TK1 with Purified ab76495 at 1/200 dilution (0.1 µg/ml) (Red). Cells were fixed with 4% Paraformaldehyde and permeabilised with 90% Methanol. A Goat anti rabbit IgG (Alexa Fluor® 488 [ab150077](#)) secondary antibody was used at 1/2000. Isotype control - Rabbit monoclonal IgG (Left). Unlabeled control - /.



Western blot - Anti-Thymidine Kinase 1/TK1 antibody [EPR3193] (ab76495)

**All lanes :** Anti-Thymidine Kinase 1/TK1 antibody [EPR3193] (ab76495) at 1/1000 dilution

**Lane 1 :** Wild-type HEK-293T cell lysate

**Lane 2 :** TK1 knockout HEK-293T cell lysate

Lysates/proteins at 20 µg per lane.

Performed under reducing conditions.

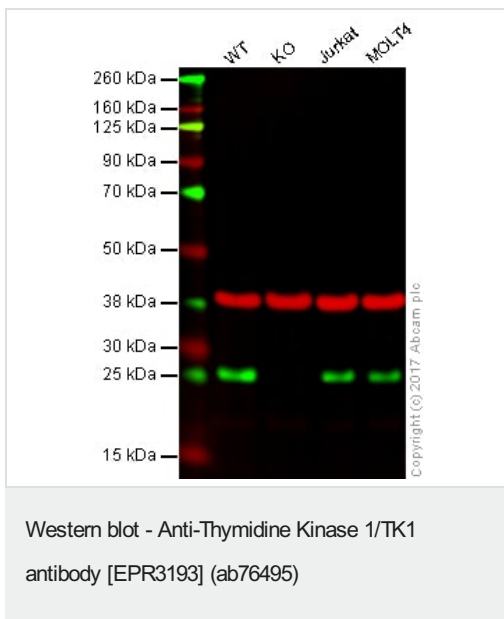
**Predicted band size:** 25 kDa

**Observed band size:** 25 kDa

**Lanes 1-2:** Merged signal (red and green). Green - ab76495 observed at 25 kDa. Red - Anti-alpha Tubulin antibody [DM1A] - Loading Control ([ab7291](#)) observed at 50 kDa.

ab76495 was shown to react with Thymidine Kinase 1/TK1 in wild-type HEK-293T cells in western blot. Loss of signal was observed when knockout cell line [ab266230](#) (knockout cell lysate [ab257745](#))

was used. Wild-type HEK-293T and TK1 knockout HEK-293T cell lysates were subjected to SDS-PAGE. Membrane was blocked for 1 hour at room temperature in 0.1% TBST with 3% non-fat dried milk. ab76495 and Anti-alpha Tubulin antibody [DM1A] - Loading Control ([ab7291](#)) overnight at 4°C at a 1 in 1000 dilution and a 1 in 20000 dilution respectively. Blots were developed with Goat anti-Rabbit IgG H&L (IRDye®800CW) preadsorbed ([ab216773](#)) and Goat anti-Mouse IgG H&L (IRDye®680RD) preadsorbed ([ab216776](#)) secondary antibodies at 1 in 20000 dilution for 1 hour at room temperature before imaging.



**Lane 1:** Wild-type HAP1 whole cell lysate (20 µg)

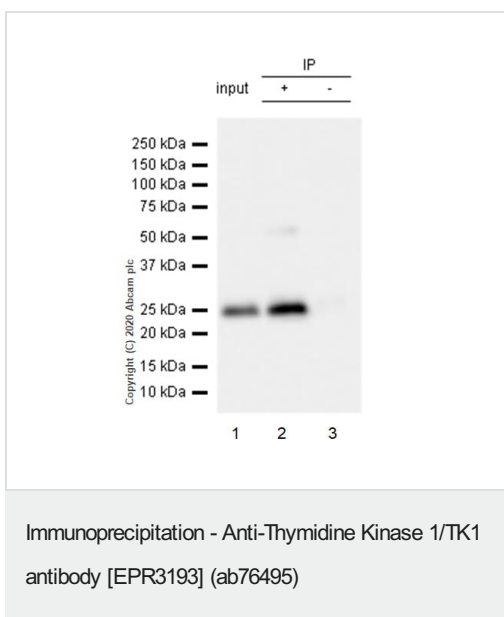
**Lane 2:** TK1 knockout HAP1 whole cell lysate (20 µg)

**Lane 3:** Jurkat whole cell lysate (20 µg)

**Lane 4:** MOLT4 whole cell lysate (20 µg)

**Lanes 1 - 4:** Merged signal (red and green). Green - ab76495 observed at 25 kDa. Red - loading control, [ab8245](#), observed at 37 kDa.

ab76495 was shown to specifically react with TK1 in wildtype HAP1 cells. No band was observed when TK1 knockout samples were examined. Wild-type and TK1 knockout samples were subjected to SDS-PAGE. Ab76495 and [ab8245](#) (Mouse anti GAPDH loading control) were incubated overnight at 4°C at 1/5000 dilution and 1/10,000 dilution respectively. Blots were developed with Goat anti-Rabbit IgG H&L (IRDye® 800CW) preabsorbed [ab216773](#) and Goat anti-Mouse IgG H&L (IRDye® 680RD) preabsorbed [ab216776](#) secondary antibodies at 1/20,000 dilution for 1 hour at room temperature before imaging.



Purified ab76495 at 1/20 dilution (0.8µg) immunoprecipitating Thymidine Kinase 1/TK1 in MOLT-4 whole cell lysate.

Lane 1 (input): MOLT-4 (Human lymphoblastic leukemia T lymphoblast)

Lane 2 (+): ab76495 + MOLT-4 whole cell lysate.

Lane 3 (-): Rabbit monoclonal IgG ([ab172730](#)) instead of ab76495 in MOLT-4 whole cell lysate.

VeriBlot for IP Detection Reagent (HRP) ([ab131366](#)) (1/1000 dilution) was used for Western blotting.

Blocking Buffer and concentration: 5% NFDm/TBST.

Diluting buffer and concentration: 5% NFDm/TBST.

Observed band size: 24 kDa

### Why choose a recombinant antibody?



**Research with confidence**  
Consistent and reproducible results



**Long-term and scalable supply**  
Recombinant technology



**Success from the first experiment**  
Confirmed specificity



**Ethical standards compliant**  
Animal-free production

Anti-Thymidine Kinase 1/TK1 antibody [EPR3193]  
(ab76495)

**Please note:** All products are "FOR RESEARCH USE ONLY. NOT FOR USE IN DIAGNOSTIC PROCEDURES"

### Our Abpromise to you: Quality guaranteed and expert technical support

---

- Replacement or refund for products not performing as stated on the datasheet
- Valid for 12 months from date of delivery
- Response to your inquiry within 24 hours
- We provide support in Chinese, English, French, German, Japanese and Spanish
- Extensive multi-media technical resources to help you
- We investigate all quality concerns to ensure our products perform to the highest standards

If the product does not perform as described on this datasheet, we will offer a refund or replacement. For full details of the Abpromise, please visit <https://www.abcam.cn/abpromise> or contact our technical team.

### Terms and conditions

---

- Guarantee only valid for products bought direct from Abcam or one of our authorized distributors