

Anti-Thrombospondin 1 antibody ab88529

[6 References](#) [3 图像](#)

概述

产品名称	Anti-Thrombospondin 1抗体
描述	小鼠多克隆抗体to Thrombospondin 1
宿主	Mouse
经测试应用	适用于: WB, ICC/IF
种属反应性	与反应: Human
免疫原	Recombinant full length protein within Human Thrombospondin 1. The exact immunogen sequence used to generate this antibody is proprietary information. If additional detail on the immunogen is needed to determine the suitability of the antibody for your needs, please contact our Scientific Support team to discuss your requirements.
阳性对照	WB: Human pancreas tissue lysate and Thrombospondin transfected 293T cell lysate IF: HeLa cell
常规说明	<p>The Life Science industry has been in the grips of a reproducibility crisis for a number of years. Abcam is leading the way in addressing this with our range of recombinant monoclonal antibodies and knockout edited cell lines for gold-standard validation. Please check that this product meets your needs before purchasing.</p> <p>If you have any questions, special requirements or concerns, please send us an inquiry and/or contact our Support team ahead of purchase. Recommended alternatives for this product can be found below, along with publications, customer reviews and Q&As</p>

性能

形式	Liquid
存放说明	Shipped at 4°C. Upon delivery aliquot and store at -20°C or -80°C. Avoid repeated freeze / thaw cycles.
存储溶液	pH: 7.40 Constituent: 100% PBS
纯度	Protein A purified
克隆	多克隆
同种型	IgG

应用

The Abpromise guarantee **Abpromise™**承诺保证使用ab88529于以下的经测试应用

“应用说明”部分 下显示的仅为推荐的起始稀释度;实际最佳的稀释度/浓度应由使用者检定。

应用	Ab评论	说明
WB		Use a concentration of 1 µg/ml. Predicted molecular weight: 129 kDa.
ICC/IF		Use a concentration of 10 µg/ml.

靶标

功能

Adhesive glycoprotein that mediates cell-to-cell and cell-to-matrix interactions. Binds heparin. May play a role in dentinogenesis and/or maintenance of dentin and dental pulp (By similarity). Ligand for CD36 mediating antiangiogenic properties. Plays a role in ER stress response, via its interaction with the activating transcription factor 6 alpha (ATF6) which produces adaptive ER stress response factors.

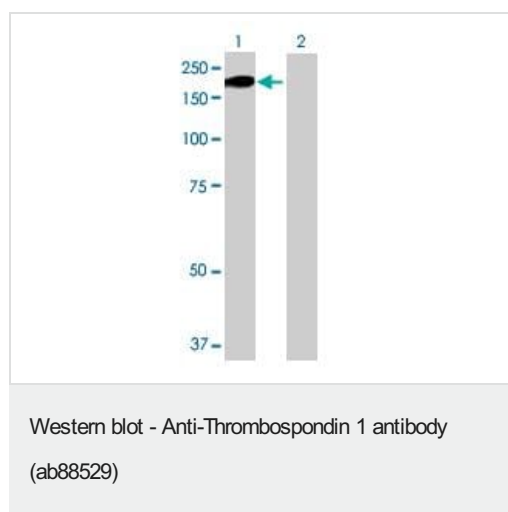
序列相似性

Belongs to the thrombospondin family.
Contains 2 EGF-like domains.
Contains 1 laminin G-like domain.
Contains 1 TSP C-terminal (TSPC) domain.
Contains 3 TSP type-1 domains.
Contains 8 TSP type-3 repeats.
Contains 1 VWFC domain.

细胞定位

Endoplasmic reticulum. Sarcoplasmic reticulum.

图片



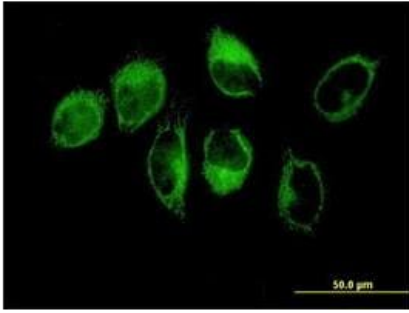
All lanes : Anti-Thrombospondin 1 antibody (ab88529) at 1 µg/ml

Lane 1 : Thrombospondin transfected 293T cell lysate

Lane 2 : Non transfected 293T cell lysate

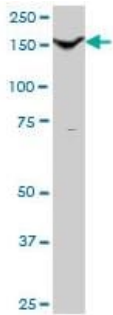
Lysates/proteins at 25 µg per lane.

Predicted band size: 129 kDa



Immunocytochemistry/ Immunofluorescence - Anti-Thrombospondin 1 antibody (ab88529)

ab88529 at 10 $\mu\text{g/ml}$ staining Thrombospondin in paraformaldehyde fixed, permeabilised HeLa cells, by immunofluorescence.



Western blot - Anti-Thrombospondin 1 antibody (ab88529)

Anti-Thrombospondin 1 antibody (ab88529) at 1 $\mu\text{g/ml}$ + Human pancreas tissue lysate at 50 μg

Predicted band size: 129 kDa

Observed band size: ~ 150 kDa

Please note: All products are "FOR RESEARCH USE ONLY. NOT FOR USE IN DIAGNOSTIC PROCEDURES"

Our Abpromise to you: Quality guaranteed and expert technical support

- Replacement or refund for products not performing as stated on the datasheet
- Valid for 12 months from date of delivery
- Response to your inquiry within 24 hours
- We provide support in Chinese, English, French, German, Japanese and Spanish
- Extensive multi-media technical resources to help you
- We investigate all quality concerns to ensure our products perform to the highest standards

If the product does not perform as described on this datasheet, we will offer a refund or replacement. For full details of the Abpromise, please visit <https://www.abcam.cn/abpromise> or contact our technical team.

Terms and conditions

- Guarantee only valid for products bought direct from Abcam or one of our authorized distributors