

### Anti-TFEB antibody [EPR22940-151] ab270604

**重组** RabMAb

**9 References**   **10 图像**

#### 概述

产品名称	Anti-TFEB抗体[EPR22940-151]
描述	兔单克隆抗体[EPR22940-151] to TFEB
宿主	Rabbit
经测试应用	<b>适用于:</b> ICC/IF, IP, Flow Cyt (Intra), IHC-P, WB
种属反应性	<b>与反应:</b> Human
免疫原	Synthetic peptide. This information is proprietary to Abcam and/or its suppliers.
阳性对照	WB: IM-9 and Raji whole cell lysate. IHC-P: Human lung cancer and colon tissue. ICC/IF: IM-9 and Raji cells. Flow Cyt (intra): IM-9 and Raji cells. IP: Raji whole cell lysate.
常规说明	<p>This product is a recombinant monoclonal antibody, which offers several advantages including:</p> <ul style="list-style-type: none"> <li>- High batch-to-batch consistency and reproducibility</li> <li>- Improved sensitivity and specificity</li> <li>- Long-term security of supply</li> <li>- Animal-free production</li> </ul> <p>For more information <a href="#">see here</a>.</p> <p>Our RabMAb<sup>®</sup> technology is a patented hybridoma-based technology for making rabbit monoclonal antibodies. For details on our patents, please refer to <a href="#">RabMAb<sup>®</sup> patents</a>.</p>

#### 性能

形式	Liquid
存放说明	Shipped at 4°C. Store at +4°C short term (1-2 weeks). Upon delivery aliquot. Store at -20°C long term. Avoid freeze / thaw cycle.
存储溶液	<p>pH: 7.2</p> <p>Preservative: 0.01% Sodium azide</p> <p>Constituents: PBS, 40% Glycerol (glycerin, glycerine), 0.05% BSA</p>
纯度	Protein A purified
克隆	单克隆
克隆编号	EPR22940-151
同种型	IgG

应用

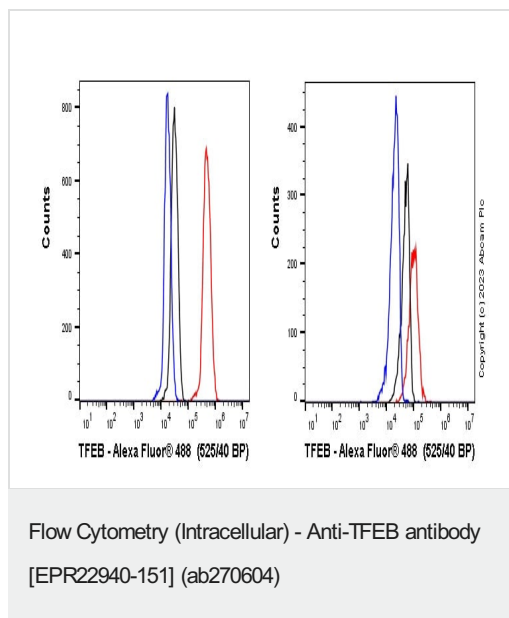
**The Abpromise guarantee**      **Abpromise™**承诺保证使用ab270604于以下的经测试应用  
“应用说明”部分 下显示的仅为推荐的起始稀释度;实际最佳的稀释度/浓度应由使用者检定。

应用	Ab评论	说明
ICC/IF		1/50.
IP		1/30.
Flow Cyt (Intra)		1/500.
IHC-P		1/500. Perform heat mediated antigen retrieval with Tris/EDTA buffer pH 9.0 before commencing with IHC staining protocol.
WB		1/1000. Detects a band of approximately 66 kDa (predicted molecular weight: 53 kDa).

靶标

功能	Transcription factor that specifically recognizes and binds E-box sequences (3'-CANNTG-5'). Efficient DNA-binding requires dimerization with itself or with another MiT/TFE family member such as TFE3 or MITF. In association with TFE3, activates the expression of CD40L in T-cells, thereby playing a role in T-cell-dependent antibody responses in activated CD4(+) T-cells and thymus-dependent humoral immunity. Specifically recognizes and binds the CLEAR-box sequence (5'-GTCACGTGAC-3') present in the regulatory region of many lysosomal genes, leading to activate their expression. It thereby plays a central role in expression of lysosomal genes. Specifically recognizes the gamma-E3 box, a subset of E-boxes, present in the heavy-chain immunoglobulin enhancer. Plays a role in the signal transduction processes required for normal vascularization of the placenta.
序列相似性	Belongs to the MiT/TFE family. Contains 1 basic helix-loop-helix (bHLH) domain.
结构域	The leucin zipper region is essential for homo- or heterodimerization and high-affinity DNA binding. DNA binding is mediated by the basic region.
翻译后修饰	Sumoylated; does not affect dimerization with MITF.
细胞定位	Cytoplasm. Nucleus. Mainly present in the cytoplasm. Under aberrant lysosomal storage conditions, it translocates from the cytoplasm to the nucleus.

图片

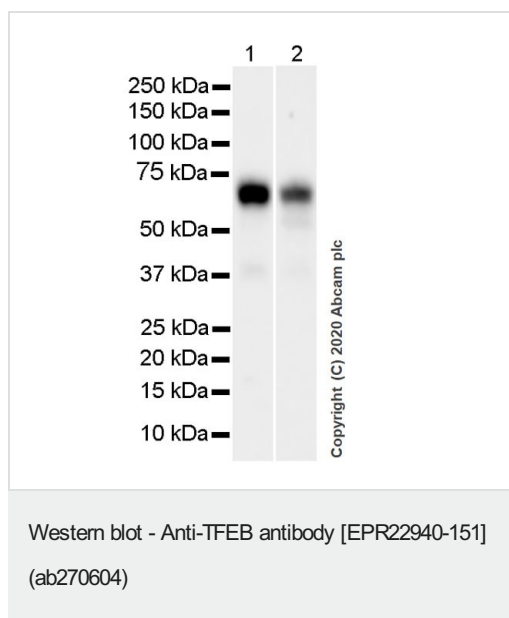


Flow cytometry overlay histogram showing left Raji positive cells and right negative MCF7 stained with ab270604 (red line). The cells were fixed with 80% methanol (5 min) and then permeabilised with 0.1% PBS-Triton X-100 for 15 min. The cells were then incubated in 1x PBS containing 10µg/ml human IgG and 10% normal goat serum to block FC receptors and non-specific protein-protein interaction followed by the antibody (ab270604) ( $1 \times 10^6$  in 100µl at 0.2µg/ml (1/10350)) for 30min at 22°C.

The secondary antibody Goat Anti-Rabbit IgG H&L (Alexa Fluor® 488) preadsorbed was incubated at 1/4000 for 30min at 22°C

Isotype control antibody (black line) was Recombinant Rabbit IgG, monoclonal [EPR25A] - Isotype Control used at the same concentration and conditions as the primary antibody. Unlabelled sample (blue line) was also used as a control.

Acquisition of >5000 events were collected using a 50 mW Blue laser (488nm) and 525/40 bandpass filter.



**All lanes :** Anti-TFEB antibody [EPR22940-151] (ab270604) at 1/1000 dilution

**Lane 1 :** Raji (human Burkitt's lymphoma B lymphocyte), whole cell lysate

**Lane 2 :** IM-9 (human multiple myeloma B Lymphoblast), whole cell lysate

Lysates/proteins at 40 µg per lane.

### Secondary

**All lanes :** Goat Anti-Rabbit IgG H&L (HRP) ([ab97051](#)) at 1/20000 dilution

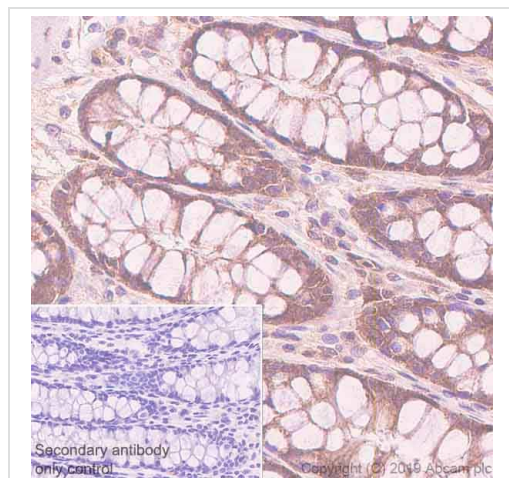
**Predicted band size:** 53 kDa

**Observed band size:** 66 kDa

Blocking and diluting buffer and concentration: 5% NFDM/TBST.

The molecular weight observed is consistent with what has been described in the literature (PMID:30519051).

Exposure time: 26 secs.

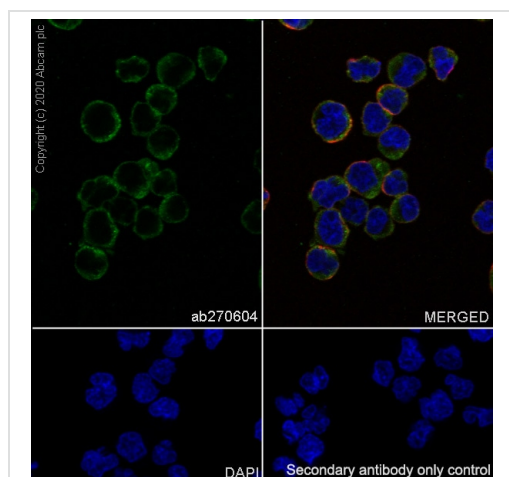


Immunohistochemistry (Formalin/PFA-fixed paraffin-embedded sections) - Anti-TFEB antibody [EPR22940-151] (ab270604)

Immunohistochemical analysis of paraffin-embedded human colon tissue labeling TFEB with ab270604 at 1/500 followed by a ready to use Goat Anti-Rabbit IgG H&L (HRP). Positive staining in human colon tissue is observed (PMID:30519051). The section was incubated with ab270604 for 20 mins at room temperature. The immunostaining was performed on a Leica Biosystems BOND® RX instrument Counterstained with hematoxylin.

Secondary antibody only control: Secondary antibody is a ready to use Goat Anti-Rabbit IgG H&L (HRP).

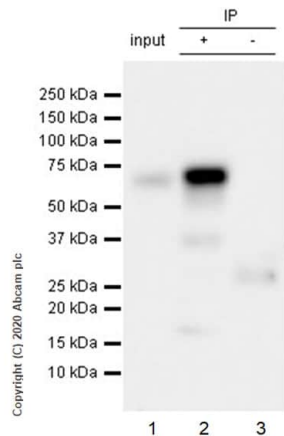
Heat mediated antigen retrieval with Tris-EDTA buffer (pH 9.0, epitope retrieval solution2) for 20 mins.



Immunocytochemistry/ Immunofluorescence - Anti-TFEB antibody [EPR22940-151] (ab270604)

Immunofluorescent analysis of 4% Paraformaldehyde-fixed, 0.1% Triton X-100 permeabilized Raji cells labeling TFEB with ab270604 at 1/50 dilution, followed by **ab150077** Goat Anti-Rabbit IgG H&L (Alexa Fluor® 488) antibody at 1/1000 dilution (Green). Confocal image showing cytoplasmic staining in Raji cells. **ab195889** Anti-alpha Tubulin antibody [DM1A] - Microtubule Marker (Alexa Fluor® 594) was used to counterstain tubulin at 1/200 dilution (Red). The nuclear counterstain was DAPI (Blue).

Secondary antibody only control: Secondary antibody is **ab150077** Goat Anti-Rabbit IgG H&L (Alexa Fluor® 488) at 1/1000 dilution.



Immunoprecipitation - Anti-TFEB antibody  
[EPR22940-151] (ab270604)

TFEB was immunoprecipitated from 0.35 mg Raji (human Burkitt's lymphoma B lymphocyte), whole cell lysate with ab270604 at 1/30 dilution (2µg in 0.35mg lysates). Western blot was performed on the immunoprecipitate using ab270604 at 1/500 dilution. VeriBlot for IP Detection Reagent (HRP)([ab131366](#)) was used at 1/1000 dilution.

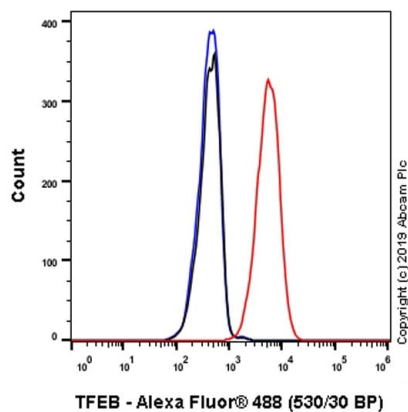
**Lane 1:** Raji whole cell lysate.

**Lane 2:** ab270604 IP in Raji whole cell lysate.

**Lane 3:** Rabbit monoclonal IgG ([ab172730](#)) instead of ab270604 in Raji whole cell lysate.

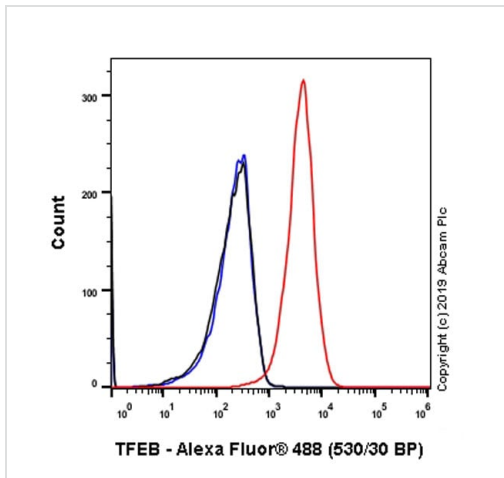
Blocking and dilution buffer and concentration: 5% NFDM/TBST.

Exposure time: 3 secs.



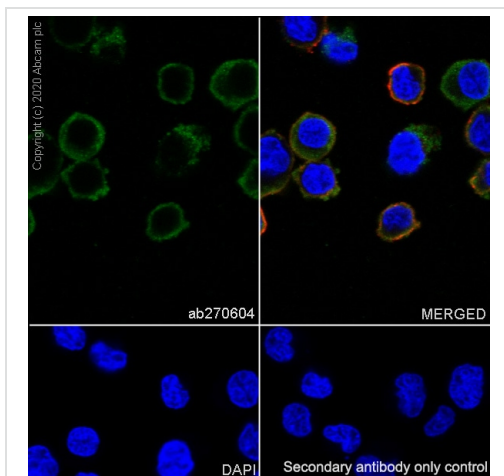
Flow Cytometry (Intracellular) - Anti-TFEB antibody  
[EPR22940-151] (ab270604)

Intracellular flow cytometric analysis of 4% paraformaldehyde fixed 90% methanol permeabilized IM-9 (Human multiple myeloma B Lymphoblast) cells labeling TFEB with ab270604 at 1/500 (Red) compared with a Rabbit monoclonal IgG ([ab172730](#)) / Black isotype control and an unlabeled control (cells without incubation with primary antibody and secondary antibody) (Blue). A Goat anti rabbit IgG (Alexa Fluor® 488, [ab150077](#)) at 1/2000 dilution was used as the secondary antibody.



Flow Cytometry (Intracellular) - Anti-TFEB antibody  
[EPR22940-151] (ab270604)

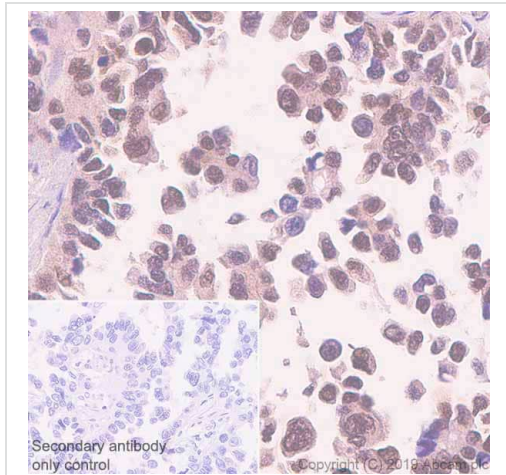
Intracellular flow cytometric analysis of 4% paraformaldehyde fixed 90% methanol permeabilized Raji (Human Burkitt's lymphoma B lymphocyte) cells labeling TFEB with ab270604 at 1/500 (Red) compared with a Rabbit monoclonal IgG ([ab172730](#)) / Black isotype control and an unlabeled control (cells without incubation with primary antibody and secondary antibody) (Blue). A Goat anti rabbit IgG (Alexa Fluor® 488, [ab150077](#)) at 1/2000 dilution was used as the secondary antibody.



Immunocytochemistry/ Immunofluorescence - Anti-TFEB antibody [EPR22940-151] (ab270604)

Immunofluorescent analysis of 4% Paraformaldehyde-fixed, 0.1% Triton X-100 permeabilized IM-9 cells labeling TFEB with ab270604 at 1/50 dilution, followed by [ab150077](#) Goat Anti-Rabbit IgG H&L (Alexa Fluor® 488) antibody at 1/1000 dilution (Green). Confocal image showing cytoplasmic staining in IM-9 cells. [ab195889](#) Anti-alpha Tubulin antibody [DM1A] - Microtubule Marker (Alexa Fluor® 594) was used to counterstain tubulin at 1/200 dilution (Red). The nuclear counterstain was DAPI (Blue).

Secondary antibody only control: Secondary antibody is [ab150077](#) Goat Anti-Rabbit IgG H&L (Alexa Fluor® 488) at 1/1000 dilution.







Immunohistochemistry (Formalin/PFA-fixed paraffin-embedded sections) - Anti-TFEB antibody [EPR22940-151] (ab270604)

Immunohistochemical analysis of paraffin-embedded human lung cancer tissue labeling TFEB with ab270604 at 1/500 followed by a ready to use Goat Anti-Rabbit IgG H&L (HRP). Positive staining in human lung cancer tissue is observed (PMID:26264650). The section was incubated with ab270604 for 20 mins at room temperature. The immunostaining was performed on a Leica Biosystems BOND® RX instrument Counterstained with hematoxylin.

Secondary antibody only control: Secondary antibody is a ready to use Goat Anti-Rabbit IgG H&L (HRP).

Heat mediated antigen retrieval with Tris-EDTA buffer (pH 9.0, epitope retrieval solution2) for 20 mins.

Why choose a recombinant antibody?

 <p><b>Research with confidence</b> Consistent and reproducible results</p>	 <p><b>Long-term and scalable supply</b> Recombinant technology</p>
 <p><b>Success from the first experiment</b> Confirmed specificity</p>	 <p><b>Ethical standards compliant</b> Animal-free production</p>

Anti-TFEB antibody [EPR22940-151] (ab270604)

**Please note:** All products are "FOR RESEARCH USE ONLY. NOT FOR USE IN DIAGNOSTIC PROCEDURES"

### Our Abpromise to you: Quality guaranteed and expert technical support

- Replacement or refund for products not performing as stated on the datasheet

- Valid for 12 months from date of delivery
- Response to your inquiry within 24 hours
- We provide support in Chinese, English, French, German, Japanese and Spanish
- Extensive multi-media technical resources to help you
- We investigate all quality concerns to ensure our products perform to the highest standards

If the product does not perform as described on this datasheet, we will offer a refund or replacement. For full details of the Abpromise, please visit <https://www.abcam.cn/abpromise> or contact our technical team.

#### **Terms and conditions**

---

- Guarantee only valid for products bought direct from Abcam or one of our authorized distributors