


Anti-Tet2 antibody ab99432

1 图像

概述

产品名称	Anti-Tet2抗体
描述	山羊多克隆抗体to Tet2
宿主	Goat
特异性	This antibody is expected to recognize both reported isoforms of Human TET2(NP_001120680.1; NP_060098.3).
经测试应用	适用于: IHC-P
种属反应性	与反应: Human 预测可用于: Mouse, Dog 
免疫原	Synthetic peptide corresponding to internal amino acids 761-775 (C- PHPQSNNDQREGSF) of both isoforms of Human TET2 (NP_001120680.1; NP_060098.3). Run BLAST with Run BLAST with
阳性对照	Human brain lysates (Amygdala and Hippocampus) Human spleen.
常规说明	<p>The Life Science industry has been in the grips of a reproducibility crisis for a number of years. Abcam is leading the way in addressing this with our range of recombinant monoclonal antibodies and knockout edited cell lines for gold-standard validation. Please check that this product meets your needs before purchasing.</p> <p>If you have any questions, special requirements or concerns, please send us an inquiry and/or contact our Support team ahead of purchase. Recommended alternatives for this product can be found below, along with publications, customer reviews and Q&As</p>

性能

形式	Liquid
存放说明	Shipped at 4°C. Upon delivery aliquot and store at -20°C. Avoid repeated freeze / thaw cycles.
存储溶液	pH: 7.30 Preservative: 0.02% Sodium azide Constituents: 0.5% BSA, Tris buffered saline
纯度	Immunogen affinity purified
纯化说明	Purified from goat serum by ammonium sulphate precipitation followed by antigen affinity chromatography using the immunizing peptide.

克隆 多克隆
同种型 IgG

应用

The Abpromise guarantee **Abpromise™**承诺保证使用ab99432于以下的经测试应用

“应用说明”部分 下显示的仅为推荐的起始稀释度;实际最佳的稀释度/浓度应由使用者检定。

应用	Ab评论	说明
IHC-P		<p>Use a concentration of 2 - 6 µg/ml.</p> <p>In paraffin-embedded Human Spleen shows nuclear staining in select splenocytes.</p> <p>Never incubate primary overnight. We know a lot of customers get non-specific background after overnight incubations. We always recommend to incubate for 1h at room temp. This allows a higher signal/background ratio at better controlled conditions.</p>

靶标

功能 Catalyzes the conversion of methylcytosine (5mC) to 5-hydroxymethylcytosine (hmC). Plays an important role in myelopoiesis. The clear function of 5-hydroxymethylcytosine (hmC) is still unclear but it may influence chromatin structure and recruit specific factors or may constitute an intermediate component in cytosine demethylation.

组织特异性 Broadly expressed. Highly expressed in hematopoietic cells; highest expression observed in granulocytes. Expression is reduced in granulocytes from peripheral blood of patients affected by myelodysplastic syndromes.

疾病相关 Note=TET2 is frequently mutated in myeloproliferative disorders (MPD). These constitute a heterogeneous group of disorders, also known as myeloproliferative diseases or myeloproliferative neoplasms (MPN), characterized by cellular proliferation of one or more hematologic cell lines in the peripheral blood, distinct from acute leukemia. Included diseases are: essential thrombocythemia, polycythemia vera, primary myelofibrosis (chronic idiopathic myelofibrosis). Bone marrow samples from patients display uniformly low levels of hmC in genomic DNA compared to bone marrow samples from healthy controls as well as hypomethylation relative to controls at the majority of differentially methylated CpG sites. Defects in TET2 are a cause of polycythemia vera (PV) [MIM:263300]. A myeloproliferative disorder characterized by abnormal proliferation of all hematopoietic bone marrow elements, erythroid hyperplasia, an absolute increase in total blood volume, but also by myeloid leukocytosis, thrombocytosis and splenomegaly.

Note=TET2 is frequently mutated in systemic mastocytosis; also known as systemic mast cell disease. A condition with features in common with myeloproliferative diseases. It is a clonal disorder of the mast cell and its precursor cells. The clinical symptoms and signs of systemic mastocytosis are due to accumulation of clonally derived mast cells in different tissues, including bone marrow, skin, the gastrointestinal tract, the liver, and the spleen.

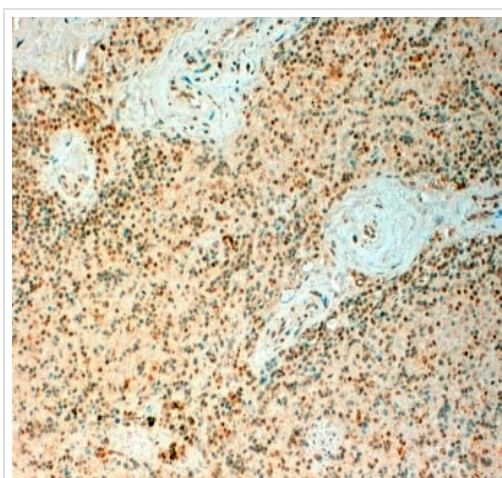
Note=TET2 is frequently mutated in myelodysplastic syndromes, a heterogeneous group of closely related clonal hematopoietic disorders. All are characterized by a hypercellular or hypocellular bone marrow with impaired morphology and maturation, dysplasia of the myeloid, megakaryocytic and/or erythroid lineages, and peripheral blood cytopenias resulting from

ineffective blood cell production. Included diseases are: refractory anemia (RA), refractory anemia with ringed sideroblasts (RARS), refractory anemia with excess blasts (RAEB), refractory cytopenia with multilineage dysplasia and ringed sideroblasts (RCMD-RS). Chronic myelomonocytic leukemia (CMML) is a myelodysplastic/myeloproliferative disease. Myelodysplastic syndromes are considered a premalignant condition in a subgroup of patients that often progresses to acute myeloid leukemia (AML). Bone marrow samples from patients display uniformly low levels of hmC in genomic DNA compared to bone marrow samples from healthy controls as well as hypomethylation relative to controls at the majority of differentially methylated CpG sites.

序列相似性

Belongs to the TET family.

图片



Immunohistochemical staining of paraffin embedded human spleen with ab99432 at 4 µg/mL. Heat mediated antigen retrieval was performed with citrate buffer, pH 6.

Immunohistochemistry (Formalin/PFA-fixed paraffin-embedded sections) - Anti-Tet2 antibody (ab99432)

Please note: All products are "FOR RESEARCH USE ONLY. NOT FOR USE IN DIAGNOSTIC PROCEDURES"

Our Abpromise to you: Quality guaranteed and expert technical support

- Replacement or refund for products not performing as stated on the datasheet
- Valid for 12 months from date of delivery
- Response to your inquiry within 24 hours
- We provide support in Chinese, English, French, German, Japanese and Spanish
- Extensive multi-media technical resources to help you
- We investigate all quality concerns to ensure our products perform to the highest standards

If the product does not perform as described on this datasheet, we will offer a refund or replacement. For full details of the Abpromise, please visit <https://www.abcam.cn/abpromise> or contact our technical team.

Terms and conditions

- Guarantee only valid for products bought direct from Abcam or one of our authorized distributors