


Anti-TDG antibody ab106301

★★★★ 4 Abreviews 1 References 3 图像

概述	
产品名称	Anti-TDG抗体
描述	兔多克隆抗体to TDG
宿主	Rabbit
特异性	From Jan 2024, QC testing of replenishment batches of this polyclonal changed. All tested and expected application and reactive species combinations are still covered by our Abcam product promise. However, we no longer test all applications. For more information on a specific batch, please contact our Scientific Support who will be happy to help.
经测试应用	适用于: WB, IP
种属反应性	与反应: Human 预测可用于: Mouse, Rat, Rabbit, Chicken, Chinese hamster 
免疫原	Synthetic peptide corresponding to Human TDG aa 250-350 conjugated to keyhole limpet haemocyanin. (Peptide available as ab124618)
阳性对照	Recombinant Human TDG protein (ab114876) can be used as a positive control in WB. This antibody gave a positive signal in the following whole cell lysates: HeLa; Jurkat; HEK293; A431; Hues7.
常规说明	<p>The Life Science industry has been in the grips of a reproducibility crisis for a number of years. Abcam is leading the way in addressing this with our range of recombinant monoclonal antibodies and knockout edited cell lines for gold-standard validation. Please check that this product meets your needs before purchasing.</p> <p>If you have any questions, special requirements or concerns, please send us an inquiry and/or contact our Support team ahead of purchase. Recommended alternatives for this product can be found below, along with publications, customer reviews and Q&As</p>
性能	
形式	Liquid
存放说明	Shipped at 4°C. Store at +4°C short term (1-2 weeks). Upon delivery aliquot. Store at -20°C or -80°C. Avoid freeze / thaw cycle.
存储溶液	pH: 7.40 Preservative: 0.02% Sodium azide

Constituent: PBS

Batches of this product that have a concentration < 1mg/ml may have BSA added as a stabilising agent. If you would like information about the formulation of a specific lot, please contact our scientific support team who will be happy to help.

纯度 Immunogen affinity purified
克隆 多克隆
同种型 IgG

应用

The Abpromise guarantee

Abpromise™承诺保证使用ab106301于以下的经测试应用

“应用说明”部分 下显示的仅为推荐的起始稀释度;实际最佳的稀释度/浓度应由使用者检定。

应用	Ab评论	说明
WB	★★★★☆ (3)	Use a concentration of 1 µg/ml. Detects a band of approximately 50 kDa (predicted molecular weight: 46 kDa).
IP		Use a concentration of 5 µg/ml.

靶标

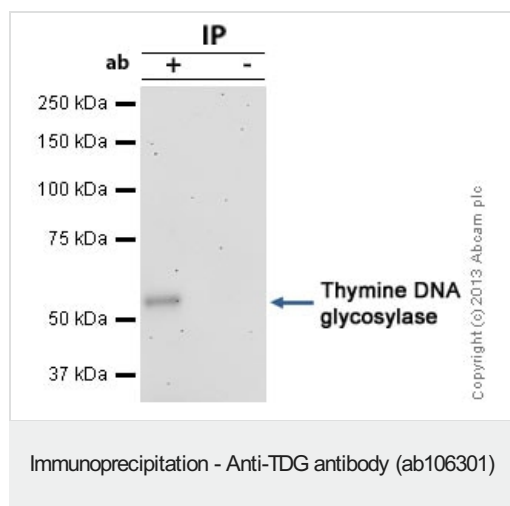
功能 In the DNA of higher eukaryotes, hydrolytic deamination of 5-methylcytosine to thymine leads to the formation of G/T mismatches. This enzyme corrects G/T mispairs to G/C pairs. It is capable of hydrolyzing the carbon-nitrogen bond between the sugar-phosphate backbone of the DNA and a mispaired thymine. In addition to the G/T, it can remove thymine also from C/T and T/T mispairs in the order G/T >> C/T > T/T. It has no detectable activity on apyrimidinic sites and does not catalyze the removal of thymine from A/T pairs or from single-stranded DNA. It can also remove uracil and 5-bromouracil from mispairs with guanine.

序列相似性 Belongs to the TDG/mug DNA glycosylase family.

翻译后修饰 Sumoylation on Lys-330 by either SUMO1 or SUMO2 induces dissociation of the product DNA.

细胞定位 Nucleus.

图片



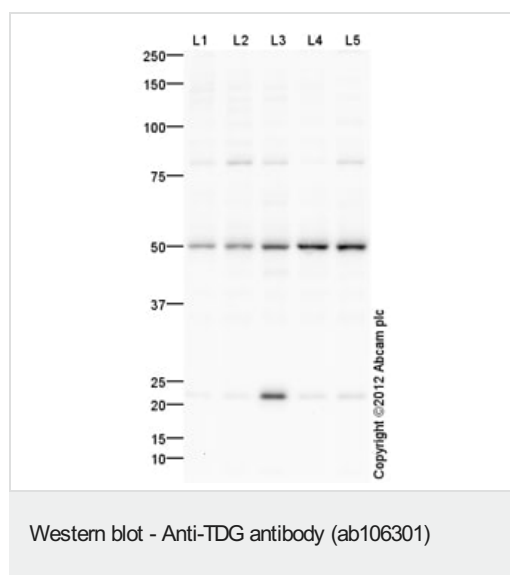
TDG was immunoprecipitated using 0.5mg A431 whole cell extract, 5µg of Rabbit polyclonal to TDG and 50µl of protein G magnetic beads (+). No antibody was added to the control (-).

The antibody was incubated under agitation with Protein G beads for 10min, A431 whole cell extract lysate diluted in RIPA buffer was added to each sample and incubated for a further 10min under agitation.

Proteins were eluted by addition of 40µl SDS loading buffer and incubated for 10min at 70°C; 10µl of each sample was separated on a SDS PAGE gel, transferred to a nitrocellulose membrane, blocked with 5% BSA and probed with ab106301.

Secondary: Mouse monoclonal [SB62a] Secondary Antibody to Rabbit IgG light chain (HRP) ([ab99697](#)).

Band: 50kDa; TDG



All lanes : Anti-TDG antibody (ab106301) at 1 µg/ml

Lane 1 : HeLa (Human epithelial carcinoma cell line) Whole Cell Lysate

Lane 2 : Jurkat (Human T cell lymphoblast-like cell line) Whole Cell Lysate

Lane 3 : HEK293 (Human embryonic kidney cell line) Whole Cell Lysate

Lane 4 : A431 (Human epithelial carcinoma cell line) Whole Cell Lysate

Lane 5 : HUES7 (Human embryonic stem cell line) Whole Cell Lysate

Lysates/proteins at 10 µg per lane.

Secondary

All lanes : Goat Anti-Rabbit IgG H&L (HRP) preadsorbed ([ab97080](#)) at 1/5000 dilution

Developed using the ECL technique.

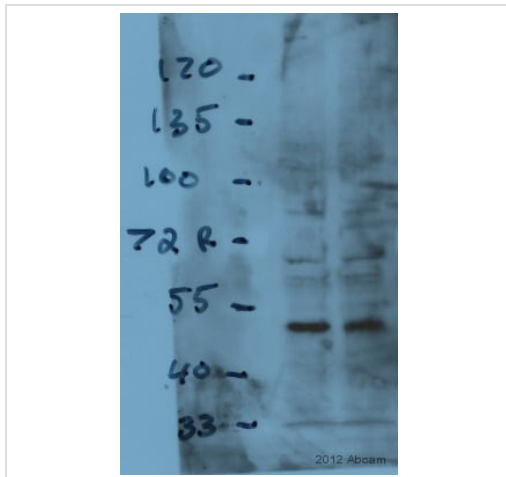
Performed under reducing conditions.

Predicted band size: 46 kDa

Observed band size: 50 kDa

Additional bands at: 22 kDa, 78 kDa. We are unsure as to the identity of these extra bands.

Exposure time: 2 minutes



Western blot - Anti-TDG antibody (ab106301)

This image is courtesy of an anonymous Abreview

All lanes : Anti-TDG antibody (ab106301) at 1 µg/ml

All lanes : Mouse ES whole cell lysate

Lysates/proteins at 100 µg per lane.

Secondary

All lanes : HRP Goat anti-rabbit IgG polyclonal at 1/2000 dilution

Developed using the ECL technique.

Performed under reducing conditions.

Predicted band size: 46 kDa

Observed band size: 50 kDa

Exposure time: 30 seconds

Please note: All products are "FOR RESEARCH USE ONLY. NOT FOR USE IN DIAGNOSTIC PROCEDURES"

Our Abpromise to you: Quality guaranteed and expert technical support

- Replacement or refund for products not performing as stated on the datasheet
- Valid for 12 months from date of delivery
- Response to your inquiry within 24 hours
- We provide support in Chinese, English, French, German, Japanese and Spanish
- Extensive multi-media technical resources to help you
- We investigate all quality concerns to ensure our products perform to the highest standards

If the product does not perform as described on this datasheet, we will offer a refund or replacement. For full details of the Abpromise, please visit <https://www.abcam.cn/abpromise> or contact our technical team.

Terms and conditions

- Guarantee only valid for products bought direct from Abcam or one of our authorized distributors